

1. PaDIL Species Factsheet



Scientific Name:

Cintractia limitata G.P. Clinton

Basidiomycota, Ustilaginomycetes, Ustilaginales, Cintractiaceae

Common Name

Cyperus Smut

Live link: <http://www.padil.gov.au:80/aus-smuts/Pest/Main/139918>

Image Library

Smut Fungi of Australia

Live link: <http://www.padil.gov.au:80/aus-smuts/>

Partners for Smut Fungi of Australia image library



Agri-Science Queensland, DEEDI

<http://www.deedi.qld.gov.au>

2. Species Information

2.1. Details

Specimen Contact: Roger Shivas - roger.shivas@deedi.qld.gov.au

Author: Roger Shivas

Citation: Roger Shivas (2010) Cyperus Smut(*Cintractia limitata*) Updated on 11/16/2010 Available online: PaDIL - <http://www.padil.gov.au>

Image Use: Free for use under the Creative Commons Attribution 3.0 Australia licence

2.2. URL

Live link: <http://www.padil.gov.au:80/aus-smuts/Pest/Main/139918>

2.3. Facets

Columella: absent

Distribution: NSW, NT, QLD, VIC, WA

Peridium: present

Sorus position: inflorescence

Sorus shape: long cylindrical, globose to short cylindrical

Spore balls: absent

Spore mass texture: agglutinated, powdery

Spore shape: globose or subglobose, irregular, ovoid to ellipsoidal

Spore surface ornamentation: punctate, smooth

Status: Native Australian Species

Sterile cells: absent

Host Family: Cyperaceae

2.4. Other Names

Cintractia axicola var. *minor* G.P. Clinton

Cintractia chacoensis Hirschh.

Cintractia congensis Henn.

Cintractia cyperi-polystachyi Henn.

Cintractia distans (as Mundk.

Cintractia limitata var. *congoensis* Zambett.

Cintractia minor (G.P. Clinton) H.S. Jacks.

Cintractia tangensis Henn.

Cintractia togoensis Henn.

Ustilago mariscana Zundel

2.5. Diagnostic Notes

****Sori**** surrounding the base of floral peduncles, pedicels, axes of spikelets, individual flowers or groups of flowers, spherical, ovoid or fusiform, from 1 mm long in the flowers to 10–15 mm long on the floral peduncles, when young covered by a whitish brown fungal peridium that flakes away exposing the blackish brown agglutinated mass of spores with a powdery surface.

****Spores**** globose, subglobose, ellipsoidal to slightly irregular, 9.5–14.0 × 9–12 µm, laterally flattened (7–9

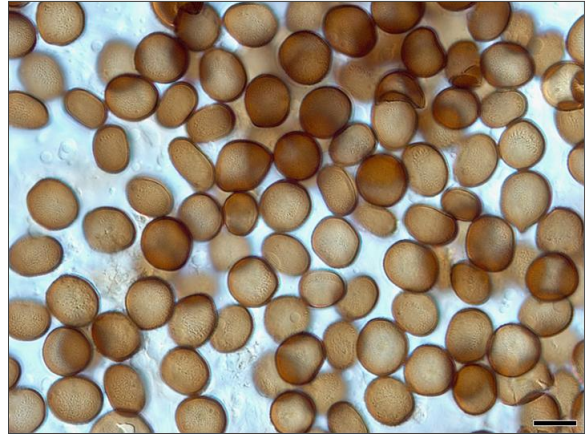
µm wide), medium dark yellowish brown; wall ±uniformly thick, 0.7–1.0 µm, apparently smooth to very finely punctate, in SEM finely densely verruculose.

****Spore germination**** (on water agar, after 1–2 days, at room temperature, from *Kyllinga polymorpha*, HUV 17120) resulting in 4-celled basidia 20–30 × 5–6 µm. Basidiospores and ramifying hyphae produced on the basidia and large dikaryotic conidia after conjugation of 2 basidial cells.

3. Diagnostic Images



Cintractia limitata on *Cyperus distans* - BRIP 54197. Scale bar = 1 cm.
Host symptoms: Dean Beasley DEEDI



Cintractia limitata on *Cyperus iria* - BRIP 48260. Scale bar = 10 μ m.
Light micrograph: Roger Shivas DEEDI

Results Generated:

Thursday, June 27, 2019
