

1. PaDIL Species Factsheet



Scientific Name:

Leucocintractia scleriae (DC.) M. Piepenbr., Begerow & Oberw.
Basidiomycota, Ustilaginomycetes, Ustilaginales, Cintractiaceae

Common Name

Rhynchospora Smut

Live link: <http://www.padil.gov.au:80/aus-smuts/Pest/Main/140017>

Image Library

Smut Fungi of Australia

Live link: <http://www.padil.gov.au:80/aus-smuts/>

Partners for Smut Fungi of Australia image library



Agri-Science Queensland, DEEDI
<http://www.deedi.qld.gov.au>

2. Species Information

2.1. Details

Specimen Contact: Roger Shivas - roger.shivas@deedi.qld.gov.au

Author: Roger Shivas

Citation: Roger Shivas (2010) Rhynchospora Smut (*Leucocintractia scleriae*) Updated on 2/24/2012 Available online: PaDIL - <http://www.padil.gov.au>

Image Use: Free for use under the Creative Commons Attribution 3.0 Australia licence

2.2. URL

Live link: <http://www.padil.gov.au:80/aus-smuts/Pest/Main/140017>

2.3. Facets

Columella: absent

Distribution: QLD

Host Family: Cyperaceae

Peridium: present

Sorus position: inflorescence

Sorus shape: long cylindrical

Spore balls: absent

Spore mass texture: agglutinated, powdery

Spore shape: globose or subglobose

Spore surface ornamentation: ridged, verruculose, reticulate

Status: Native Australian Species

Sterile cells: absent

2.4. Other Names

Cintractia albida S. Ito

Cintractia javanica Racib.

Cintractia krugiana Magnus

Cintractia krugiana var. *usambarensis* Henn.

Cintractia scleriae (DC.) L. Ling

Cintractia usambarensis (Henn.) Cif.

Uredo scleriae DC.

Ustilago scleriae (DC.) Tul. & C. Tul.

2.5. Diagnostic Notes

****Sori**** surrounding all peduncles of inflorescences with rudimentary spikelets, cylindrical, often curved, 5–20 mm long, 2–3 mm wide, at first covered by a thick white peridium that later ruptures irregularly exposing a black agglutinated spore mass with a powdery surface.

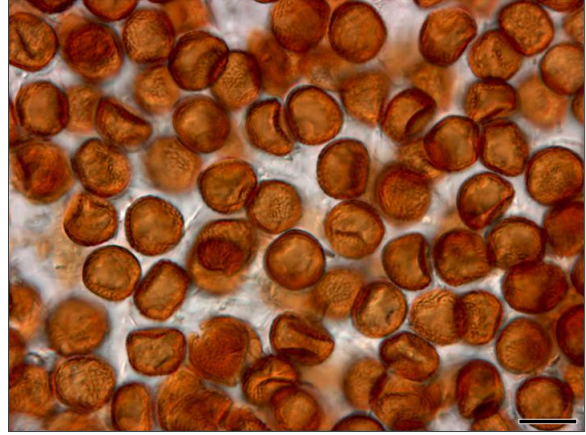
****Spores**** solitary, globose, subglobose or broadly ellipsoidal, (11–) 12–16 (–17) × (9–) 10–15 µm, laterally slightly flattened, 8–12 µm wide, light reddish brown, without appendages; wall 0.5–1.0 µm thick, covered by irregular coarse warts and ridges that are often connected by small transverse ridges or warts.

****Spore germination**** resulting in phragmobasidia; cells separating readily, producing ellipsoidal basidiospores.

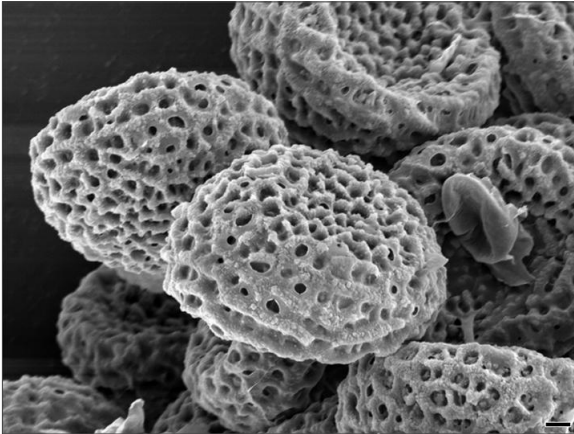
3. Diagnostic Images



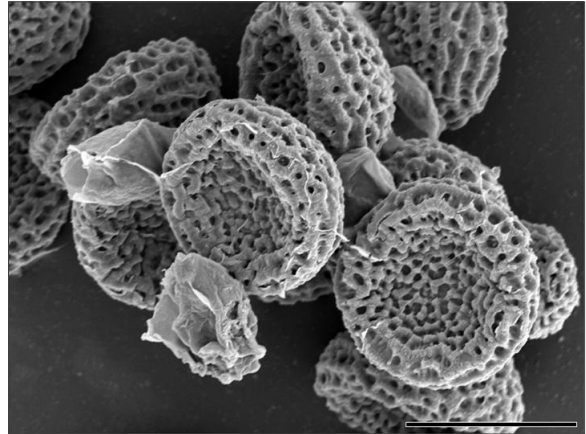
Leucocintractia scleriae on Rhynchospora corymbosa - BRIP 22954. Scale bar = 1 cm.
Host symptoms: Roger Shivas DEEDI



Leucocintractia scleriae on Rhynchospora corymbosa - BRIP 279. Scale bar = 10 μ m.
Light micrograph: Roger Shivas DEEDI



Leucocintractia scleriae on Rhynchospora corymbosa - BRIP 22954. Scale bar = 1 μ m.
Scanning Electron Micrograph: Desley Tree DEEDI



Leucocintractia scleriae on Rhynchospora corymbosa - BRIP 22954. Scale bar = 10 μ m.
Scanning Electron Micrograph: Desley Tree DEEDI

Results Generated:

Wednesday, June 26, 2019
