

# 1. PaDIL Species Factsheet



---

## Scientific Name:

*Restiosporium hypolaenae* Vánky

Basidiomycota, Ustilaginomycetes, Ustilaginales, Ustilaginaceae

## Common Name

Hypolaena Smut

Live link: <http://www.padil.gov.au:80/aus-smuts/Pest/Main/140091>

## Image Library

Smut Fungi of Australia

Live link: <http://www.padil.gov.au:80/aus-smuts/>

## Partners for Smut Fungi of Australia image library



Agri-Science Queensland, DEEDI

<http://www.deedi.qld.gov.au>

## 2. Species Information

### 2.1. Details

**Specimen Contact:** Roger Shivas - roger.shivas@deedi.qld.gov.au

**Author:** Roger Shivas

**Citation:** Roger Shivas (2010) *Hypolaena Smut (Restiosporium hypolaenae)* Updated on 12/7/2010 Available online: PaDIL - <http://www.padil.gov.au>

**Image Use:** Free for use under the Creative Commons Attribution 3.0 Australia licence

### 2.2. URL

Live link: <http://www.padil.gov.au:80/aus-smuts/Pest/Main/140091>

### 2.3. Facets

**Columella:** absent

**Distribution:** SA, TAS, WA

**Host Family:** Restionaceae

**Peridium:** absent

**Sorus position:** inflorescence

**Sorus shape:** irregular (includes naked sori)

**Spore balls:** present

**Spore mass texture:** agglutinated, granular, powdery

**Spore shape:** globose or subglobose, irregular, ovoid to ellipsoidal, polyhedral or subpolyhedral

**Spore surface ornamentation:** smooth

**Status:** Native Australian Species

**Sterile cells:** absent

### 2.4. Diagnostic Notes

**\*\*Sori\*\*** filling the nuts with a black initially agglutinated, later granular-powdery mass of spore balls, inconspicuous, hidden by the somewhat spreading floral envelopes. Infection systemic; all capsules of a plant affected.

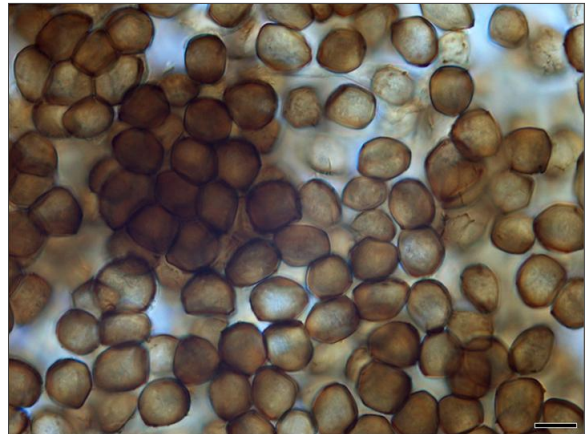
**\*\*Spore balls\*\*** subglobose, ellipsoidal, elongate to slightly irregular, 40–100 × 35–70 (–80) µm, yellowish to reddish brown or subopaque, composed of tens (30–100 or more?) of spores that separate readily by pressure.

**\*\*Spores\*\*** globose, subglobose, ovoid, ellipsoidal, elongate to subpolyhedrally irregular, 9.5–17.0 (–20) × 8–12 (–13) µm, olivaceous brown with slightly darker and paler areas; wall slightly uneven, 1–3 µm thick, thickest at the angles; in LM smooth, in SEM free surface very finely and densely low-verruculose.

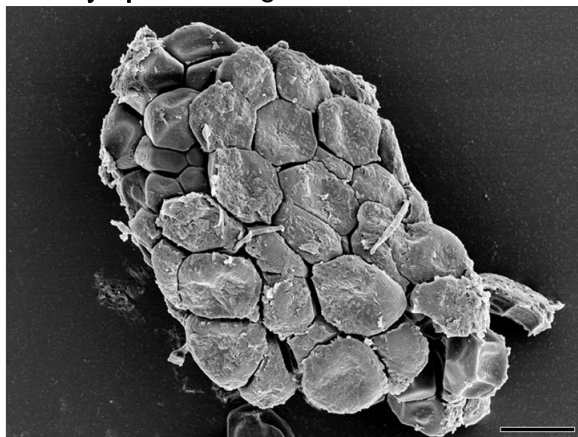
### 3. Diagnostic Images



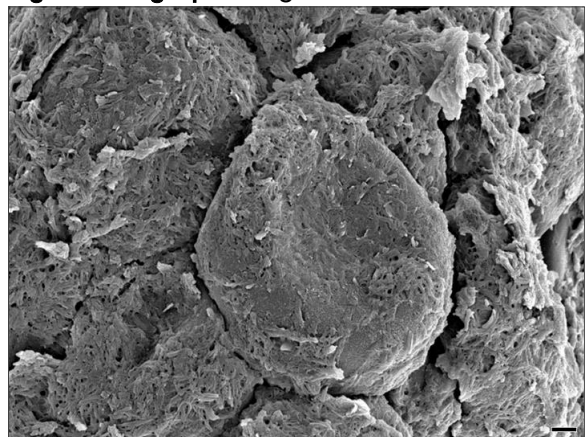
*Restiosporium hypolaenae* on *Hypolaena fastigiata* - BRIP 47607. Scale bar = 5 mm.  
**Host symptoms:** Roger Shivas DEEDI



*Restiosporium hypolaenae* on *Hypolaena fastigiata* - BRIP 47607. Scale bar = 10  $\mu$ m.  
**Light micrograph:** Roger Shivas DEEDI



*Restiosporium hypolaenae* on *Hypolaena fastigiata* - BRIP 47607. Scale bar = 10  $\mu$ m.  
**Scanning electron micrograph:** Desley Tree DEEDI



*Restiosporium hypolaenae* on *Hypolaena fastigiata* - BRIP 47607. Scale bar = 1  $\mu$ m.  
**Scanning electron micrograph:** Desley Tree DEEDI

Results Generated:

Sunday, June 16, 2019

---