

# 1. PaDIL Species Factsheet



---

## Scientific Name:

*Restiosporium leptocarpi* (Berk.) Vánky

Basidiomycota, Ustilaginomycetes, Ustilaginales, Ustilaginaceae

## Common Name

Leptocarpus Smut

Live link: <http://www.padil.gov.au:80/aus-smuts/Pest/Main/140094>

## Image Library

Smut Fungi of Australia

Live link: <http://www.padil.gov.au:80/aus-smuts/>

## Partners for Smut Fungi of Australia image library



Agri-Science Queensland, DEEDI

<http://www.deedi.qld.gov.au>

## 2. Species Information

### 2.1. Details

**Specimen Contact:** Roger Shivas - roger.shivas@deedi.qld.gov.au

**Author:** Roger Shivas

**Citation:** Roger Shivas (2010) *Leptocarpus Smut (Restiosporium leptocarpi)* Updated on 12/7/2010 Available online: PaDIL - <http://www.padil.gov.au>

**Image Use:** Free for use under the Creative Commons Attribution 3.0 Australia licence

### 2.2. URL

Live link: <http://www.padil.gov.au:80/aus-smuts/Pest/Main/140094>

### 2.3. Facets

**Columella:** absent

**Distribution:** VIC, WA

**Host Family:** Restionaceae

**Peridium:** absent

**Sorus position:** inflorescence

**Sorus shape:** irregular (includes naked sori)

**Spore balls:** present

**Spore mass texture:** agglutinated, granular, powdery

**Spore shape:** globose or subglobose, irregular, polyhedral or subpolyhedral

**Spore surface ornamentation:** smooth, verruculose

**Status:** Native Australian Species

**Sterile cells:** absent

### 2.4. Other Names

*Thecaphora leptocarpi* Berk.

### 2.5. Diagnostic Notes

**\*\*Sori\*\*** in all nuts of an inflorescence, hidden by the floral envelopes, filled with a black initially agglutinated, later granular-powdery mass of spore balls.

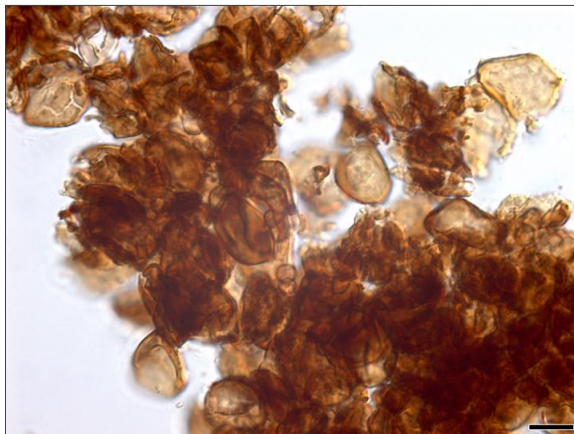
**\*\*Spore balls\*\*** subglobose, ellipsoidal or slightly irregular, 40–90 × 35–70 µm, dark olivaceous brown to opaque, composed of tens of spores that separate readily by pressure.

**\*\*Spores\*\*** subglobose, ellipsoidal, elongate to subpolyhedrally irregular, 16–25 (–27) × 11–19 µm, medium dark olivaceous brown; wall uniformly 1.0–1.5 µm thick, finely and densely low-verrucose; spore profile finely wavy.

### 3. Diagnostic Images



*Restiosporium leptocarpi* on *Leptocarpus tenax* - MEL 1055119. Scale bar = 3 mm.  
Host symptoms: Roger Shivas DEEDI



*Restiosporium leptocarpi* on *Leptocarpus tenax* - MEL 1055119. Scale bar = 10  $\mu$ m.  
Light micrograph: Roger Shivas DEEDI

### Results Generated:

Tuesday, July 16, 2019

---