

1. PaDIL Species Factsheet



Scientific Name:

Cermatulus nasalis (Westwood, 1837)

(Hemiptera: Pentatomidae: Asopinae)

Common Name

Glossy Shield Bug

Live link: <http://www.padil.gov.au:80/maf-border/Pest/Main/141086>

Image Library

New Zealand Biosecurity

Live link: <http://www.padil.gov.au:80/maf-border/>

Partners for New Zealand Biosecurity image library



Landcare Research — Manaaki Whenua

<http://www.landcareresearch.co.nz/>



MPI (Ministry for Primary Industries)

<http://www.biosecurity.govt.nz/>

2. Species Information

2.1. Details

Specimen Contact: MAF Plant Health & Environment Laboratory - PHEL_Entomology@maf.govt.nz

Author: MAF Plant Health & Environment Laboratory

Citation: MAF Plant Health & Environment Laboratory (2011) Glossy Shield Bug(*Cermatulus nasalis*) Updated on 3/20/2014 Available online: PaDIL - <http://www.padil.gov.au>

Image Use: Free for use under the Creative Commons Attribution 3.0 Australia licence

2.2. URL

Live link: <http://www.padil.gov.au:80/maf-border/Pest/Main/141086>

2.3. Facets

Commodity Overview: Horticulture

Commodity Type: Kiwifruit

Groups: Bugs

Status: NZ - Exotic

Pest Status: 0 Unknown

Distribution: 0 Unknown

Host Family: 0 Unknown

2.4. Other Names

Heteroptera

Stink Bug

2.5. Diagnostic Notes

****Adult****

About 8.5-15 mm long. Brass-coloured or light reddish with deep brown small dense punctations. Head piceous with a median line and lateral margins piceous. Pronotal cellii, a large Y-shaped medial mark on scutellum, two median spots on the corium and on either side of dorsal abdominal incisures black or piceous. Antennal segments black except at extreme base. Beneath, mainly brass-coloured or light reddish with numerous dark punctations. Upper side of fore femora, marks on the thoracic pleura, the evaporative area, and a large ventral spot on the sixth abdominal segment black. Clasper flattened with lateral margins sinuate and apically broadened. Parandria simple U-shaped flattened structures, Aedeagus with phallosoma strongly sclerotized and ventrally much shorter than dorsally; dorsally a strong and large thecal shield, conjunctiva three lobed with two lateral lobes and a globular dorsal lobe. Medial penial plates fused centrally and developed as a long prong each anteriorly and posteriorly. Gonopore discharging between the posterior prongs.

****Junenile****

Head and thorax slender. Labium 4-segmented, long and bowed. Profemora thickened; protibiae and profemora with numerous long hairs. Without a ridged prosternal groove.

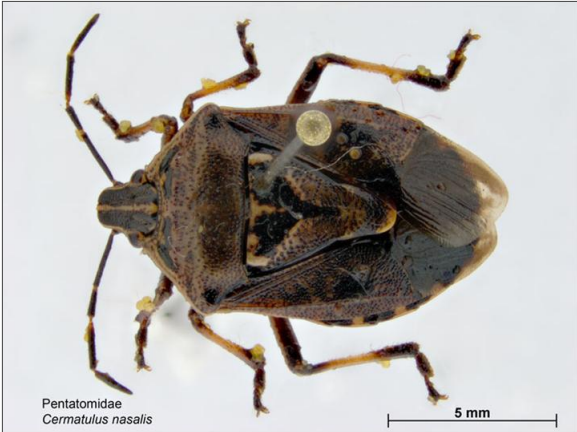
****References****

- Gross, G.F. (1975). *_Plant-feeding and other Bugs (Hemiptera) of South Australia_*. Heteroptera—Part I. A.B. James Adelaide, 250 pp.
- Stehr, F.W. (1997). *_Immature Insects_*. Vol. 2. Kendall/Hunt Publishing Company, Iowa, 974 pp.

2.6. References

- Gross, G.F. (1975). *_Plant-feeding and other Bugs (Hemiptera) of South Australia_*. Heteroptera—Part I. A.B. James Adelaide, 250 pp.
- Stehr, F.W. (1997). *_Immature Insects_*. Vol. 2. Kendall/Hunt Publishing Company, Iowa, 974 pp.

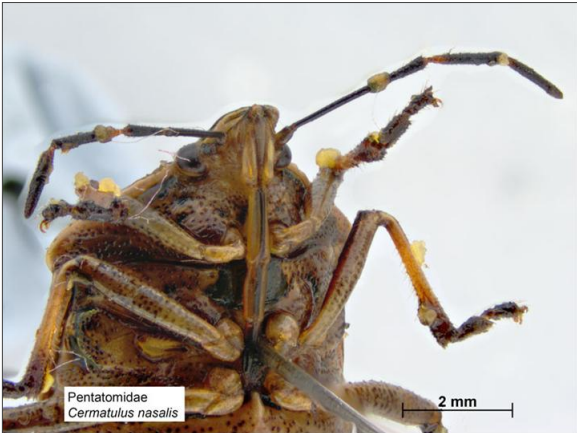
3. Diagnostic Images



HEM35
Dorsal - Adult: Caroline Harding MAF



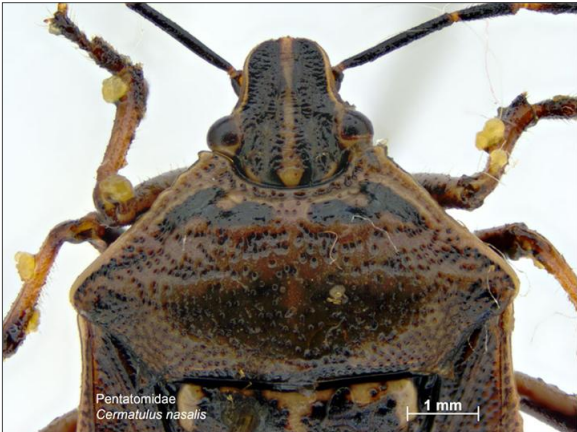
HEM35
Head Side - Adult: Caroline Harding MAF



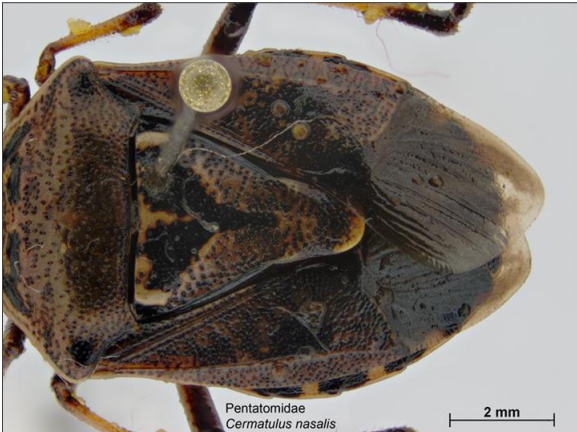
HEM35
Headfront - Adult: Caroline Harding MAF



HEM35
Lateral - Adult: Caroline Harding MAF



HEM35
Pronotum - Adult: Caroline Harding MAF



HEM35
Wing - Adult: Caroline Harding MAF

4. Other Images



HEM35
Dorsal - Nymph: Caroline Harding MAF



HEM35
Lateral - Nymph: Caroline Harding MAF

Results Generated:

Sunday, July 21, 2019
