

1. PaDIL Species Factsheet



Scientific Name:

Rhyzopertha dominica (Fabricius, 1775)
(Coleoptera: Bostrichidae: Dinoderinae)

Common Name

lesser grain borer

Live link: <http://www.padil.gov.au:80/pests-and-diseases/Pest/Main/135848>

Image Library

Australian Biosecurity

Live link: <http://www.padil.gov.au:80/pests-and-diseases/>

Partners for Australian Biosecurity image library



Museum Victoria

<http://museumvictoria.com.au/>



CRC National Plant Biosecurity

<http://www.crcplantbiosecurity.com.au/>



Plant Health Australia

<http://www.planthealthaustralia.com.au/>



Department of Agriculture, Fisheries and Forestry

<http://www.daff.gov.au/>



Department of Agriculture and Food, Western Australia

<http://www.agric.wa.gov.au/>

2. Species Information

2.1. Details

Specimen Contact: Museum Victoria - discoverycentre@museum.vic.gov.au

Author: Walker, K.

Citation: Walker, K. (2006) lesser grain borer (*Rhyzopertha dominica*) Updated on 9/6/2011 Available online: PaDIL - <http://www.padil.gov.au>

Image Use: Free for use under the Creative Commons Attribution 3.0 Australia licence

2.2. URL

Live link: <http://www.padil.gov.au:80/pests-and-diseases/Pest/Main/135848>

2.3. Facets

Status: Exotic Species Establishment in Australia

Group: Beetles

Commodity Overview: General, Horticulture

Commodity Type: Grains, Stored Products

Distribution: USA and Canada, Central and South America, Europe and Northern Asia, Mediterranean Basin, Africa, South and South-East Asia, Australasian - Oceanian, Cosmopolitan

2.4. Other Names

Rhyzopertha dominica (Fabricius, 1775)

2.5. Diagnostic Notes

The subfamily Dinoderinae is characterised by:

- Hind coxae contiguous or closely approximated
- Pronotum hood-like; head deeply inserted into the pronotum underneath, head not entirely visible from above
- Pronotum with posterolateral carina but carina not present along entire lateral margin
- Pronotum anterior margin rounded or conical shaped or truncate
- Pronotum with medium tooth most prominent
- Head with plane or labrum angled downwards from a raised clypeus
- Tarsal segment 1 as long as or longer than segment 2; Segment 3 as long as or longer than segment 2.

The genus *Rhyzopertha* is characterised by:

- Body length: 3.5-4.2mm
- Colour and shape: red-brown to black-brown with a cylindrical body
- Pronotum evenly or broadly rounded or tapering in front, teeth along anterior margin arranged in a curve
- Pronotum with posterolateral carian - may be weakly developed
- Pronotum basal half granulate
- Elytra noticeably more than 2.0x as long as pronotum
- Second antennal segment more than 0.5x as long as first
- Last three segments of antennae form a club.

There is only one known (cosmopolitan) species: *Rhyzopertha dominica*.

Source: Graham Goodyer 2008 (unpublished) Identification of Bostrichid beetles to Genus and Species.

3. Diagnostic Images



Ex. nuts from China. 8 December 1955 det.
J. Belfour-Browne
Antenna : Clare McLellan Museum Victoria



Australia
Dorsal view: Simon Hinkley & Ken Walker
Museum Victoria



Australia
Elytra: Simon Hinkley & Ken Walker
Museum Victoria



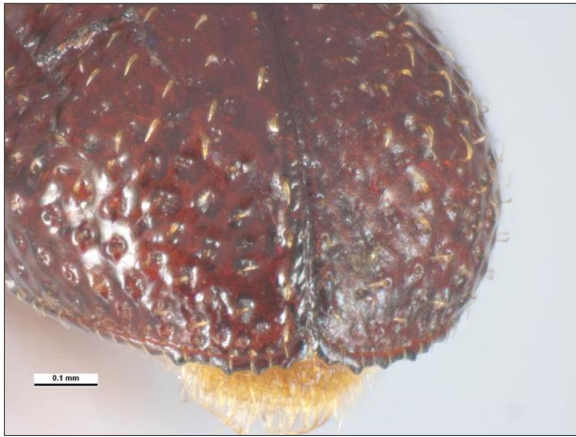
Australia
Head front: Simon Hinkley & Ken Walker
Museum Victoria



Australia
Head side: Simon Hinkley & Ken Walker
Museum Victoria



Australia
Lateral view: Simon Hinkley & Ken Walker
Museum Victoria



Australia
Posterior view: Simon Hinkley & Ken Walker
Museum Victoria



Australia
Pronotum: Simon Hinkley & Ken Walker
Museum Victoria



Australia
Thorax side: Simon Hinkley & Ken Walker
Museum Victoria



Ex. nuts from China. 8 December 1955 det.
J. Belfour-Browne
Ventral Image: Clare McLellan Museum
Victoria

Results Generated:

Thursday, November 15, 2018