

# 1. PaDIL Species Factsheet



## Scientific Name:

*Orthorhinus cylindrirostris* (Fabricius)  
(Coleoptera: Curculionidae: Molytinae)

## Common Name

Elephant weevil

Live link: <http://www.padil.gov.au:80/pests-and-diseases/Pest/Main/135869>

## Image Library

Australian Biosecurity

Live link: <http://www.padil.gov.au:80/pests-and-diseases/>

## Partners for Australian Biosecurity image library



Museum Victoria  
<http://museumvictoria.com.au/>



CRC National Plant Biosecurity  
<http://www.crcplantbiosecurity.com.au/>



Plant Health Australia  
<http://www.planthealthaustralia.com.au/>



Department of Agriculture, Fisheries and Forestry  
<http://www.daff.gov.au/>



Department of Agriculture and Food, Western Australia  
<http://www.agric.wa.gov.au/>

## 2. Species Information

### 2.1. Details

**Specimen Contact:** Museum Victoria - [discoverycentre@museum.vic.gov.au](mailto:discoverycentre@museum.vic.gov.au)

**Author:** Walker, K.

**Citation:** Walker, K. (2006) Elephant weevil (*Orthorhinus cylindrirostris*) Updated on 12/31/2006 Available online: PaDIL - <http://www.padil.gov.au>

**Image Use:** Free for use under the Creative Commons Attribution 3.0 Australia licence

### 2.2. URL

Live link: <http://www.padil.gov.au:80/pests-and-diseases/Pest/Main/135869>

### 2.3. Facets

**Status:** Native Australian Pest Species

**Group:** Beetles

**Commodity Overview:** Horticulture, Forestry

**Commodity Type:** Timber, Fresh Flowers, Fresh Stems, Ornamentals, Viticulture, Citrus, Pome fruits

**Distribution:** Australasian - Oceanian

### 2.4. Diagnostic Notes

Adults 10-20mm body length. Size and colour are extremely variable, typical specimens have a tubercle on each side of the pronotum near the apex. Each elytron has two tubercles on the 2nd interstices, the 5th interstice has a similar tubercle on the posterior declivity. The sexes are differentiated as follows: male has the antennae inserted much closer to the apex of the rostrum than the female, the forelegs of the male are much longer than in the female, the three basal tarsal segments of the fore tarsi are greatly expanded and ciliate in the male and not so in the female, the rostrum is more coarse, less cylindrical and somewhat shorter in the male than in the female; and the male is usually larger than the female.

Source: Lea, A. (1897). Descriptions of new species of Australian Coleoptera. Proceedings of the Linnean Society of New South Wales. Vol. 22(3): 623.

### 2.5. Web Links

**Australian Insect Common Names:** [http://www.ento.csiro.au/aicn/name\\_c/a\\_1402.htm](http://www.ento.csiro.au/aicn/name_c/a_1402.htm)

**CSIRO live image and host damage:**

<http://www.ento.csiro.au/Ecowatch/Primary/beetles/pages/Curculionidae.htm>

**Overview of pest problems:**

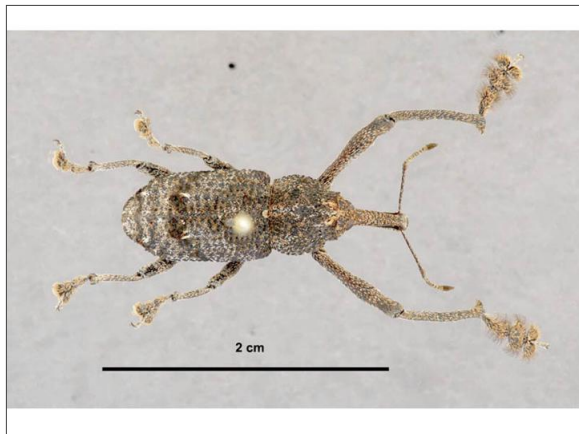
[http://www.langhornevine.com.au/viticulture/projects/elephant\\_weevils/Field%20Report\\_FINAL.pdf](http://www.langhornevine.com.au/viticulture/projects/elephant_weevils/Field%20Report_FINAL.pdf)

**Viticulture literature:**

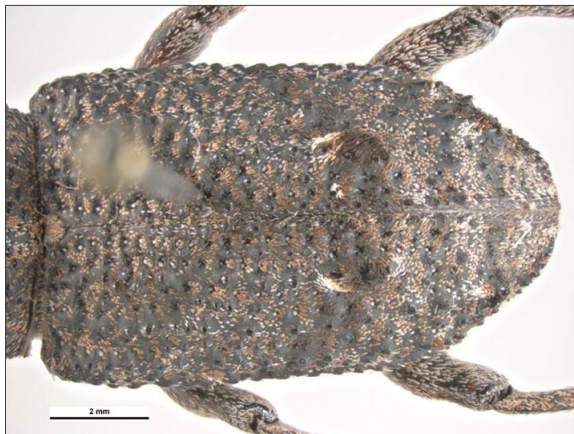
[http://www.langhornevine.com.au/viticulture/projects/elephant\\_weevils/Elephant%20Weevil%20Literature%20Review.pdf](http://www.langhornevine.com.au/viticulture/projects/elephant_weevils/Elephant%20Weevil%20Literature%20Review.pdf)

**Weevils in vineyards:** [http://www.dpiw.tas.gov.au/inter.nsf/Attachments/CPAS-5VC45F/\\$FILE/Weevil%20article.pdf](http://www.dpiw.tas.gov.au/inter.nsf/Attachments/CPAS-5VC45F/$FILE/Weevil%20article.pdf)

### 3. Diagnostic Images



Australia: Victoria, Maryborough  
**Dorsal view - male:** Simon Hinkley & Ken Walker Museum Victoria



Australia: Victoria, Maryborough Jan 1969  
**Elytra - male:** Simon Hinkley & Ken Walker Museum Victoria



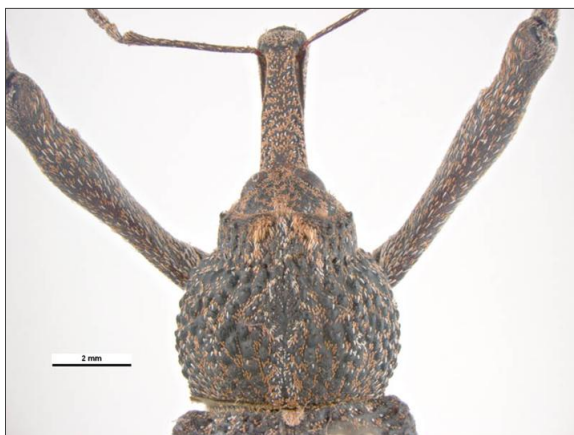
Australia: Victoria, Maryborough Jan 1969  
**Head front - male:** Simon Hinkley & Ken Walker Museum Victoria



Australia: Victoria, Maryborough Jan 1969  
**Head side - male:** Simon Hinkley & Ken Walker Museum Victoria



Australia: Victoria, Maryborough  
**Lateral view - male:** Simon Hinkley & Ken Walker Museum Victoria

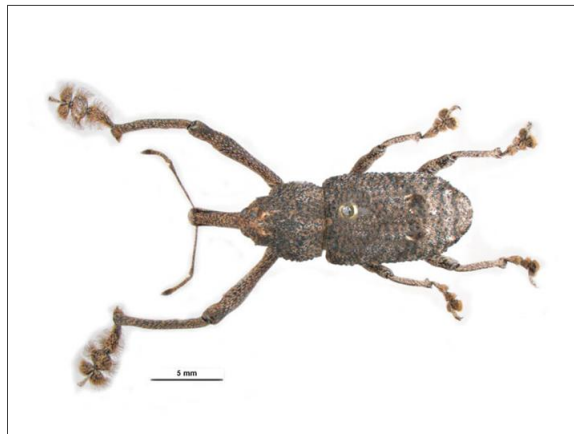


Australia: Victoria, Maryborough Jan 1969  
**Pronotum - male:** Simon Hinkley & Ken Walker Museum Victoria

## 4. Other Images



Australia: Queensland, Clump Pt, Aug 1947.  
F.E. Wilson coll.  
**Dorsal view - female:** Simon Hinkley & Ken  
Walker Museum Victoria



Australia: Victoria, Maryborough Jan 1969  
**Dorsal view - male:** Simon Hinkley & Ken  
Walker Museum Victoria

## Results Generated:

Saturday, December 15, 2018

---