

1. PaDIL Species Factsheet



Scientific Name:

Acalolepta vastator (Newman)

(Coleoptera: Cerambycidae: Lamiinae)

Common Name

fig longicorn beetle

Live link: <http://www.padil.gov.au:80/pests-and-diseases/Pest/Main/135873>

Image Library

Australian Biosecurity

Live link: <http://www.padil.gov.au:80/pests-and-diseases/>

Partners for Australian Biosecurity image library



Museum Victoria

<http://museumvictoria.com.au/>



CRC National Plant Biosecurity

<http://www.crcplantbiosecurity.com.au/>



Plant Health Australia

<http://www.planthealthaustralia.com.au/>



Department of Agriculture, Fisheries and Forestry

<http://www.daff.gov.au/>



Department of Agriculture and Food, Western Australia

<http://www.agric.wa.gov.au/>

2. Species Information

2.1. Details

Specimen Contact: Museum Victoria - discoverycentre@museum.vic.gov.au

Author: Walker, K.

Citation: Walker, K. (2006) fig longicorn beetle (*Acalolepta vastator*) Updated on 2/13/2012 Available online: PaDIL - <http://www.padil.gov.au>

Image Use: Free for use under the Creative Commons Attribution 3.0 Australia licence

2.2. URL

Live link: <http://www.padil.gov.au:80/pests-and-diseases/Pest/Main/135873>

2.3. Facets

Status: Native Australian Pest Species

Group: Beetles

Commodity Overview: Horticulture, Forestry

Commodity Type: Timber, Viticulture

Distribution: South and South-East Asia, Australasian - Oceanian

2.4. Diagnostic Notes

The beetle is grayish brown in colour. Body length: male c. 23mm, antennae c. 65; female c. 20mm, antennae c. 27mm. Body covered with short, adpressed hair. Pronotum with large pointed spine on either side.

2.5. References

Goodwin, S., Pettit, M.A. (1994). *Acalolepta vastator*, Newman, Coleoptera: Cerambycidae, infesting grapevines in the Hunter Valley, New South Wales. 2. Biology and ecology *Quelle: Journal of the Australian Entomological Society* 33 391-397,

2.6. Web Links

Adult image: <http://ozlepidoptera.tripod.com/none/vastator.html>

Australian Common Names of Insects: http://www.ento.csiro.au/aicn/name_s/b_13.htm

GWRC research report: <http://www.gwrdc.com.au/downloads/ResearchTopics/DAN%205.pdf>

Images and text: http://www.geocities.com/brisbane_leafbeetles/FigLongicorn.htm

Tasmanian grapevine damage report: <http://www.dpiw.tas.gov.au/inter.nsf/WebPages/LJEM-5SE3ES?open>

3. Diagnostic Images



Australia: Victoria, Belgrave, 1948, F.E. Wilson
Dorsal view - female: Simon Hinkley & Ken Walker Museum Victoria



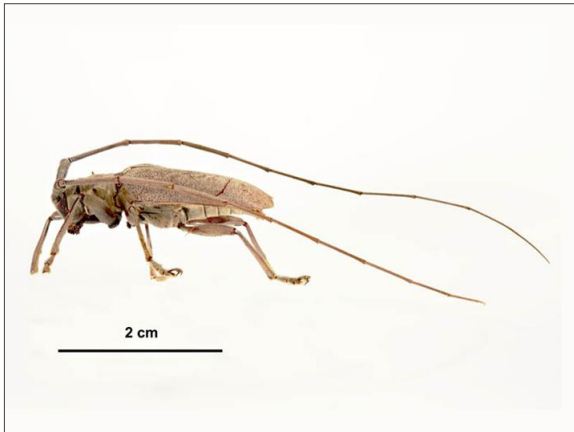
Australia: Victoria
Dorsal view - male: Simon Hinkley & Ken Walker Museum Victoria



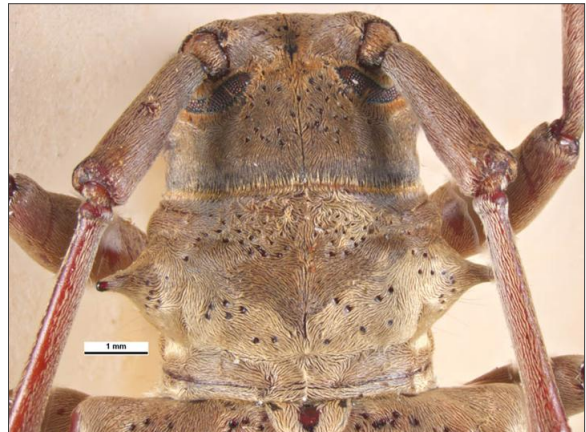
Australia: Victoria, Belgrave
Elytra - female: Simon Hinkley & Ken Walker Museum Victoria



Australia
Elytra - male: Simon Hinkley & Ken Walker Museum Victoria



Australia: Victoria.
Lateral view - male: Simon Hinkley & Ken Walker Museum Victoria



Australia: Victoria Belgrave, 1948
Pronotum - female: Simon Hinkley & Ken Walker Museum Victoria

4. Other Images

Results Generated:

Friday, February 21, 2020
