

# 1. PaDIL Species Factsheet



## Scientific Name:

*Adoryphorus coulonii* (Burmeister)  
(Coleoptera: Scarabaeidae: Dynastinae)

## Common Name

Redheaded pasture cockchafer

Live link: <http://www.padil.gov.au:80/pests-and-diseases/Pest/Main/135882>

## Image Library

Australian Biosecurity

Live link: <http://www.padil.gov.au:80/pests-and-diseases/>

## Partners for Australian Biosecurity image library



Museum Victoria  
<http://museumvictoria.com.au/>



CRC National Plant Biosecurity  
<http://www.crcplantbiosecurity.com.au/>



Plant Health Australia  
<http://www.planthealthaustralia.com.au/>



Department of Agriculture, Fisheries and Forestry  
<http://www.daff.gov.au/>



Department of Agriculture and Food, Western Australia  
<http://www.agric.wa.gov.au/>

## 2. Species Information

### 2.1. Details

**Specimen Contact:** Museum Victoria - [discoverycentre@museum.vic.gov.au](mailto:discoverycentre@museum.vic.gov.au)

**Author:** Walker, K.

**Citation:** Walker, K. (2007) Redheaded pasture cockchafer (*Adoryphorus coulonii*) Updated on 12/28/2007

Available online: PaDIL - <http://www.padil.gov.au>

**Image Use:** Free for use under the Creative Commons Attribution 3.0 Australia licence

### 2.2. URL

Live link: <http://www.padil.gov.au:80/pests-and-diseases/Pest/Main/135882>

### 2.3. Facets

**Status:** Native Australian Pest Species

**Group:** Beetles

**Commodity Overview:** Field Crops and Pastures

**Commodity Type:** Fresh Roots, Grasses

**Distribution:** Australasian - Oceanian

### 2.4. Diagnostic Notes

Adult is a dark reddish-brown to black beetle about 13mm long and 8 mm wide.

*A. coulonii* can be distinguished from *Heteronychus arator* as follow:

In dorsal view, *H. arator* body shape is almost parallel compared to distinctly oval in *A. coulonii*.

Elytra of *H. arator* is weakly impressed with longitudinal striae and indistinctly punctate between striae compared to *A. coulonii* elytra which has deeply impressed striae and distinctly punctate between striae.

### 2.5. Web Links

**Factsheet:** <http://www.8x5.com.au/documents/PasturePestFielddayHandouts22062005.pdf>

**New Zealand distribution and host records:**

[http://www.ento.org.nz/nzentomologist/free\\_issues/Volume%2021-75-79.pdf](http://www.ento.org.nz/nzentomologist/free_issues/Volume%2021-75-79.pdf)

**SARDI Factsheet:** [http://www.sardi.sa.gov.au/pdfserve/ento/fact\\_sheets/cockchaf.pdf](http://www.sardi.sa.gov.au/pdfserve/ento/fact_sheets/cockchaf.pdf)

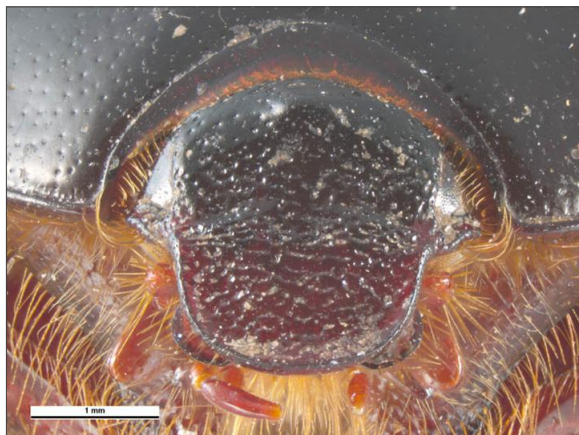
### 3. Diagnostic Images



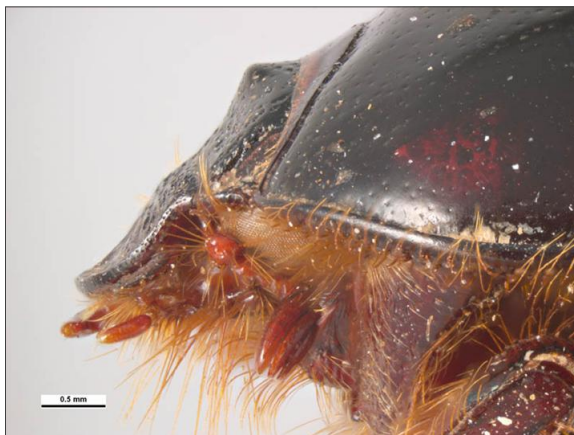
Australia: Victoria, Melbourne F.E. Wilson  
**Dorsal view:** Simon Hinkley & Ken Walker  
Museum Victoria



Australia: Victoria, Melbourne F.E. Wilson  
**Elytra:** Simon Hinkley & Ken Walker  
Museum Victoria



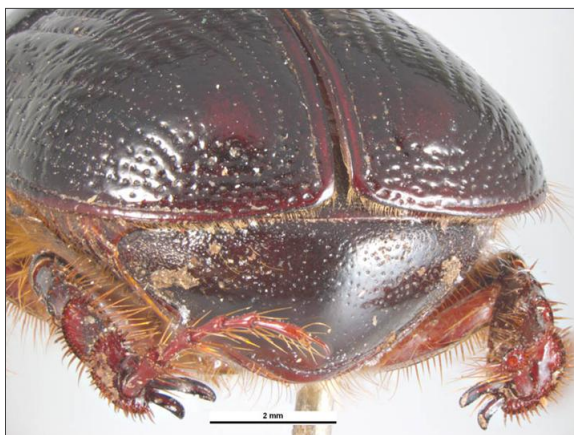
Australia: Victoria, Melbourne F.E. Wilson  
**Head front:** Simon Hinkley & Ken Walker  
Museum Victoria



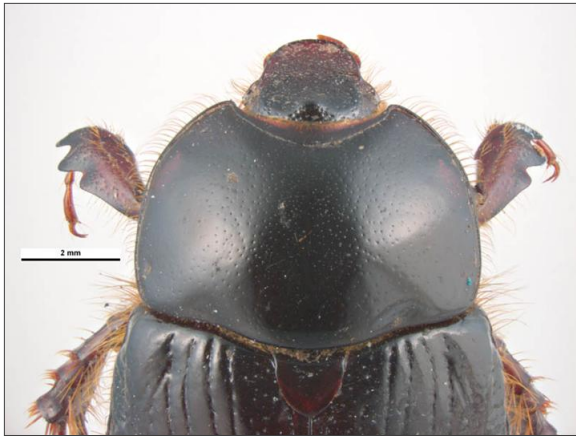
Australia: Victoria, Melbourne F.E. Wilson  
**Head side:** Simon Hinkley & Ken Walker  
Museum Victoria



Australia: Victoria, Melbourne F.E. Wilson  
**Lateral view:** Simon Hinkley & Ken Walker  
Museum Victoria



Australia: Victoria, Melbourne F.E. Wilson  
**Posterior view:** Simon Hinkley & Ken Walker  
Museum Victoria



Australia: Victoria, Melbourne F.E. Wilson  
**Pronotum:** Simon Hinkley & Ken Walker  
Museum Victoria



Australia: Victoria, Melbourne F.E. Wilson  
**Thorax side:** Simon Hinkley & Ken Walker  
Museum Victoria

## Results Generated:

Friday, February 21, 2020

---