

# 1. PaDIL Species Factsheet



## Scientific Name:

*Aleuroclava jasmini* Takahashi

(Hemiptera: Aleyrodidae: Aleyrodinae)

## Common Name

Jasmine whitefly

Live link: <http://www.padil.gov.au:80/pests-and-diseases/Pest/Main/136161>

## Image Library

Australian Biosecurity

Live link: <http://www.padil.gov.au:80/pests-and-diseases/>

## Partners for Australian Biosecurity image library



Museum Victoria

<http://museumvictoria.com.au/>



CRC National Plant Biosecurity

<http://www.crcplantbiosecurity.com.au/>



Plant Health Australia

<http://www.planthealthaustralia.com.au/>



Department of Agriculture, Fisheries and Forestry

<http://www.daff.gov.au/>



Department of Agriculture and Food, Western Australia

<http://www.agric.wa.gov.au/>

## 2. Species Information

### 2.1. Details

**Specimen Contact:** Natural History Museum of London, BMNH -

**Author:** Walker, K.

**Citation:** Walker, K. (2008) Jasmine whitefly (*Aleuroclava jasmini*) Updated on 11/25/2011 Available online: PaDIL - <http://www.padil.gov.au>

**Image Use:** Free for use under the Creative Commons Attribution 3.0 Australia licence

### 2.2. URL

Live link: <http://www.padil.gov.au:80/pests-and-diseases/Pest/Main/136161>

### 2.3. Facets

**Status:** Exotic Regulated Pest - absent from Australia

**Group:** Bugs

**Commodity Overview:** Horticulture, Forestry

**Commodity Type:** Timber, Ornamentals, Leaves, Citrus

**Distribution:** USA and Canada, Europe and Northern Asia, Mediterranean Basin

### 2.4. Diagnostic Notes

Puparium with a submarginal row of tubercles; thoracic tracheal notch present, cleft platelike; anal cleft furrow present; shape insinuate; vasiform orifice subcordate, lingula simple not lobed; abdomen shorter than cephalothorax, submargin not solely defined by a ventral suture, dorsal disc sculptured.

Sources:

Hodes, G. and G. Evans (2005). An identification guide to the whiteflies (Hemiptera: Aleyrodidae) of the southeastern United States. *Florida Entomologist* 88(4):518-534

See weblink John Dooley Aleyrodid Pupa Workshop

### 2.5. References

Hodes, G. and G. Evans (2005). An identification guide to the whiteflies (Hemiptera: Aleyrodidae) of the southeastern United States. *Florida Entomologist* 88(4):518-534

### 2.6. Web Links

**John Dooley Aleyrodid Pupa Workshop:**

[http://www.lucidcentral.org/keys/v3/whitefly/PDF\\_PwP%20ETC/Aleyrodid%20Workshop%20Presentation%202006.pdf](http://www.lucidcentral.org/keys/v3/whitefly/PDF_PwP%20ETC/Aleyrodid%20Workshop%20Presentation%202006.pdf)

**Lucid Whitefly Host to Pest List:**

[http://www.lucidcentral.org/keys/v3/whitefly/Aleyrodidae/Media/Html/Pests\\_Hosts.htm](http://www.lucidcentral.org/keys/v3/whitefly/Aleyrodidae/Media/Html/Pests_Hosts.htm)

### 3. Diagnostic Images



Iraq: Baghdad, November 2004. det. J. Martin

**Dorsal horizontal view:** Ken Walker Museum Victoria



Iraq: Baghdad, November 2004. det. J. Martin

**Dorsal view:** Ken Walker Museum Victoria



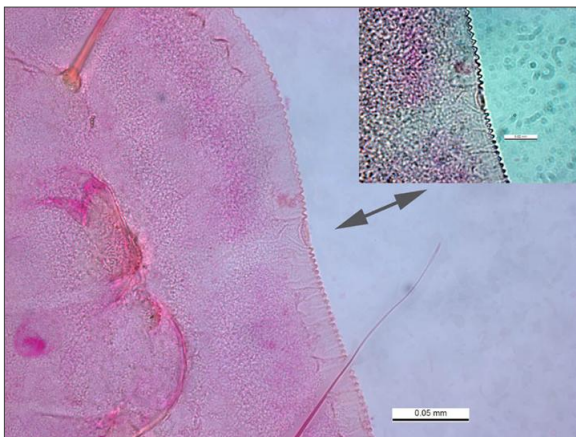
Iraq: Baghdad, November 2004. det. J. Martin

**Marginal crenulations:** Ken Walker Museum Victoria



Iraq: Baghdad, November 2004. det. J. Martin

**Rhachis:** Ken Walker Museum Victoria



Iraq: Baghdad, November 2004. det. J. Martin

**Tracheal notch present:** Ken Walker Museum Victoria



Iraq: Baghdad, November 2004. det. J. Martin

**Vasiform orifice:** Ken Walker Museum Victoria

## 4. Other Images

Results Generated:

Sunday, January 19, 2020

---