

1. PaDIL Species Factsheet



Scientific Name:

Singhius hibisci (Kotinsky, 1907)

(Hemiptera: Aleyrodidae: Aleyrodinae)

Common Name

Singhius whitefly

Live link: <http://www.padil.gov.au:80/pests-and-diseases/Pest/Main/136172>

Image Library

Australian Biosecurity

Live link: <http://www.padil.gov.au:80/pests-and-diseases/>

Partners for Australian Biosecurity image library



Museum Victoria

<http://museumvictoria.com.au/>



CRC National Plant Biosecurity

<http://www.crcplantbiosecurity.com.au/>



Plant Health Australia

<http://www.planthealthaustralia.com.au/>



Department of Agriculture, Fisheries and Forestry

<http://www.daff.gov.au/>



Department of Agriculture and Food, Western Australia

<http://www.agric.wa.gov.au/>

2. Species Information

2.1. Details

Specimen Contact: Natural History Museum of London (BMNH) -

Author: Walker, K.

Citation: Walker, K. (2008) *Singhius whitefly* (*Singhius hibisci*) Updated on 11/25/2011 Available online: PaDIL - <http://www.padil.gov.au>

Image Use: Free for use under the Creative Commons Attribution 3.0 Australia licence

2.2. URL

Live link: <http://www.padil.gov.au:80/pests-and-diseases/Pest/Main/136172>

2.3. Facets

Status: Exotic species - absent from Australia

Group: Bugs

Commodity Overview: Horticulture

Commodity Type: Ornamentals, Leaves, Viticulture

Distribution: USA and Canada, South and South-East Asia

2.4. Diagnostic Notes

Characterised by vasiform orifice subrectangular, broadly open posteriorly, inner margin with teeth; operculum subcordate; caudal furrow granulated; margin dentate.

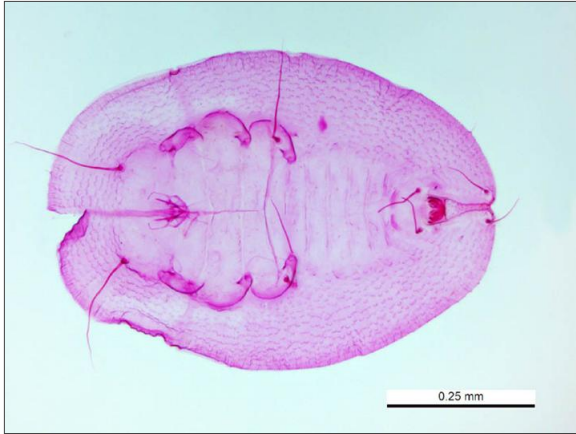
Source:

Hodges, G. & G. Evans (2005). An identification guide to the whiteflies of southeastern United States. Florida Entomologist 88(4): 518-534.

2.5. Web Links

Whitefly host list: <http://www.sel.barc.usda.gov:591/1WF/WhiteflyHost.pdf>

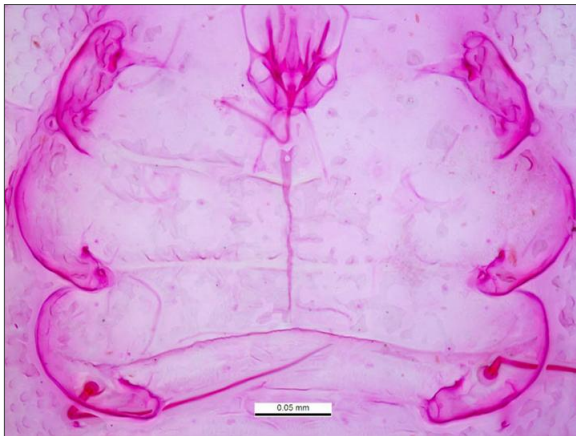
3. Diagnostic Images



Hong Kong: NT Fei Ngo Shan (Kowloon Peak) November 2005 J Martin ewx *Litsea glutinosa* det. Jon Martin
Dorsal horizontal view: Ken Walker Museum Victoria



Hong Kong: NT Fei Ngo Shan (Kowloon Peak) November 2005 J Martin ewx *Litsea glutinosa* det. Jon Martin
Dorsal vertical view - female: Ken Walker Museum Victoria



Hong Kong: NT Fei Ngo Shan (Kowloon Peak) November 2005 J Martin ewx *Litsea glutinosa* det. Jon Martin
Legs: Ken Walker Museum Victoria



Hong Kong: NT Fei Ngo Shan (Kowloon Peak) November 2005 J Martin ewx *Litsea glutinosa* det. Jon Martin
Marginal crenulations: Ken Walker Museum Victoria

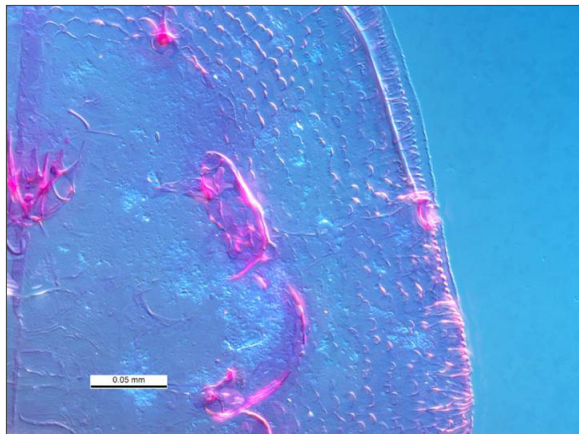


Hong Kong: NT Fei Ngo Shan (Kowloon Peak) November 2005 J Martin ewx *Litsea glutinosa* det. Jon Martin
Rhachis: Ken Walker Museum Victoria



Hong Kong: NT Fei Ngo Shan (Kowloon Peak) November 2005 J Martin ewx *Litsea glutinosa* det. Jon Martin
Tracheal notch present: Ken Walker Museum Victoria

4. Other Images



Hong Kong: NT Fei Ngo Shan (Kowloon Peak) November 2005 J Martin ewx *Litsea glutinosa* det. Jon Martin
Tracheal notch - DIC: Ken Walker Museum Victoria



Hong Kong: NT Fei Ngo Shan (Kowloon Peak) November 2005 J Martin ewx *Litsea glutinosa* det. Jon Martin
Vasiform orifice - DIC: Ken Walker Museum Victoria

Results Generated:

Thursday, April 9, 2020
