

# 1. PaDIL Species Factsheet



## Scientific Name:

*Ctenopseustis herana* (Felder & Rogenhofer)  
(Lepidoptera: Tortricidae)

## Common Name

Brownheaded leafroller

Live link: <http://www.padil.gov.au:80/pests-and-diseases/Pest/Main/136266>

## Image Library

Australian Biosecurity

Live link: <http://www.padil.gov.au:80/pests-and-diseases/>

## Partners for Australian Biosecurity image library



Museum Victoria

<http://museumvictoria.com.au/>



CRC National Plant Biosecurity

<http://www.crcplantbiosecurity.com.au/>



Plant Health Australia

<http://www.planthealthaustralia.com.au/>



Department of Agriculture, Fisheries and Forestry

<http://www.daff.gov.au/>



Department of Agriculture and Food, Western Australia

<http://www.agric.wa.gov.au/>

## 2. Species Information

### 2.1. Details

**Specimen Contact:** AQIS - Brisbane -

**Author:** Walker, K.

**Citation:** Walker, K. (2005) Brownheaded leafroller (*Ctenopseustis herana*) Updated on 12/30/2006 Available online: PaDIL - <http://www.padil.gov.au>

**Image Use:** Free for use under the Creative Commons Attribution 3.0 Australia licence

### 2.2. URL

Live link: <http://www.padil.gov.au:80/pests-and-diseases/Pest/Main/136266>

### 2.3. Facets

**Status:** Exotic species - absent from Australia

**Group:** Moths

**Commodity Overview:** Horticulture

**Commodity Type:** Fresh Fruit, Ornamentals, Leaves, Pome fruits, Stone fruits

**Distribution:** Australasian - Oceanian

### 2.4. Other Names

*Cacoecia inana* Butler, 1877

*Leafrollers*

*Tortrix herana* Felder & Rogenhofer, 1875

### 2.5. Diagnostic Notes

There are two species of brownheaded leafroller, *Ctenopseustis obliquana* and *Ctenopseustis herana*. Their appearance is identical at all stages - adult moths, eggs, larvae, or pupae.

Adults are extremely variable in colour and forewing pattern. In both sexes the forewings are often walnut brown, but vary from dark brown (almost black) to a pale fawn, and have a variety of colour combinations. Females have a characteristic darker oblique mark halfway down the edge of each forewing. The body length is generally 8-12 mm and the wingspan 20-28 mm. Males too have an oblique forewing mark, plus a characteristic dark, transverse stripe (often black) across the front part of the folded wings about 2 millimetres behind the head. Their body length is generally 8-11 mm, and wingspan 17-24 mm. Adults often have other darker areas that vary in position, and in shade from pale to dark brown. Males have a 'fan' of large scales at the tail end of the abdomen (body) whereas the brown ovipositor can be seen when viewing the tip of the female abdomen from below. Hindwings of both sexes are a uniform or mottled, pale brown, but are hidden beneath the folded forewings when the adult is at rest. The length of the resting moth is about half the wingspan.

Source:

<http://www.hortnet.co.nz/key/keys/info/lifecycl/bhl-desc.htm>

## 2.6. References

Dugale, J.S., Gleeson, D., Clunie, L.H. & Holder, P.W. (2005). A diagnostic guide to Tortricidae encountered in field surveys & quarantine inspections in New Zealand: Morphological and Molecular characters.

## 2.7. Web Links

**Biosecurity Australia Import Risk Analysis:**

[http://www.affa.gov.au/corporate\\_docs/publications/pdf/market\\_access/biosecurity/plant/nzappdira.pdf](http://www.affa.gov.au/corporate_docs/publications/pdf/market_access/biosecurity/plant/nzappdira.pdf)

**Overview information:** <http://www.hortnet.co.nz/key/keys/info/lifecycl/bhl-desc.htm#damage>

### 3. Diagnostic Images



Specimen Locality label: New Zealand, 3316  
QA  
**Dorsal view:** Ken Walker Museum Victoria



Specimen Locality label: New Zealand, 3316  
QA  
**Female head side view:** Ken Walker  
Museum Victoria



Specimen Locality label: New Zealand, 3316  
QA  
**Female lateral view:** Ken Walker Museum  
Victoria



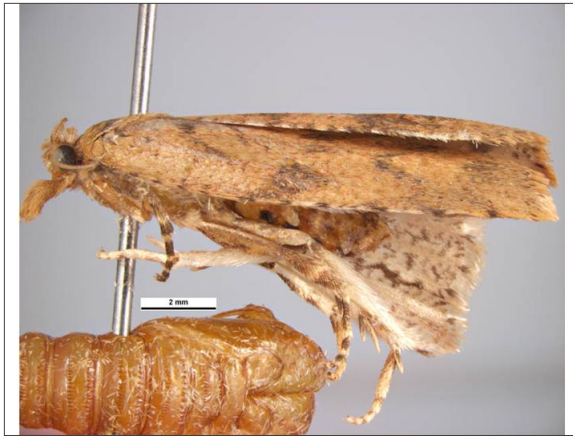
Specimen Locality label: New Zealand, 3316  
QA  
**Female wings:** Ken Walker Museum Victoria



Specimen Locality label: New Zealand, 3316  
QA  
**Lateral view of female abdomen:** Ken  
Walker Museum Victoria



Specimen Locality label: New Zealand, 3316  
QA  
**Lateral view of male:** Ken Walker Museum  
Victoria



Specimen Locality label: New Zealand, 3316  
QA  
**Lateral view of male:** Ken Walker Museum  
Victoria



Specimen Locality label: New Zealand, 3316  
QA  
**Lateral view of male abdomen:** Ken Walker  
Museum Victoria



Specimen Locality label: New Zealand, 3316  
QA  
**Male wings:** Ken Walker Museum Victoria



Specimen Locality label: New Zealand, 3316  
QA  
**Side view of male head:** Ken Walker  
Museum Victoria

## 4. Other Images



Specimen Locality label: New Zealand, 3316  
QA  
Female pupa: Ken Walker Museum Victoria



Specimen Locality label: New Zealand, 3316  
QA  
Male pupa: Ken Walker Museum Victoria

## Results Generated:

Tuesday, April 23, 2019

---