

# 1. PaDIL Species Factsheet



## Scientific Name:

*Charybdis miles* (De Haan, 1835)

Crustacea: Decapoda: Brachyura: Portunidae

## Common Name

swimmer crab

Live link: <http://www.padil.gov.au:80/pests-and-diseases/Pest/Main/136530>

## Image Library

Australian Biosecurity

Live link: <http://www.padil.gov.au:80/pests-and-diseases/>

## Partners for Australian Biosecurity image library



Museum Victoria

<http://museumvictoria.com.au/>



CRC National Plant Biosecurity

<http://www.crcplantbiosecurity.com.au/>



Plant Health Australia

<http://www.planthealthaustralia.com.au/>



Department of Agriculture, Fisheries and Forestry

<http://www.daff.gov.au/>



Department of Agriculture and Food, Western Australia

<http://www.agric.wa.gov.au/>

## 2. Species Information

### 2.1. Details

**Specimen Contact:** Gary Poore - [discoverycentre@museum.vic.gov.au](mailto:discoverycentre@museum.vic.gov.au)

**Author:** Dane, E. & Poore, G.C.B.

**Citation:** Dane, E. & Poore, G.C.B. (2008) swimmer crab (*Charybdis miles*) Updated on 4/12/2011 Available online: PaDIL - <http://www.padil.gov.au>

**Image Use:** Free for use under the Creative Commons Attribution 3.0 Australia licence

### 2.2. URL

Live link: <http://www.padil.gov.au:80/pests-and-diseases/Pest/Main/136530>

### 2.3. Facets

**Status:** Australian Native Species

**Group:** Marine

**Commodity Overview:** Marine

**Commodity Type:** Marine

**Distribution:** Australasian - Oceanian

### 2.4. Diagnostic Notes

Description: carapace hexagonal, convex with dense short setae, chela merus with 4 spines and a spinule on inner border;

Size: to 67 mm wide;

Colour: pale pink, stronger pink distally on limbs.

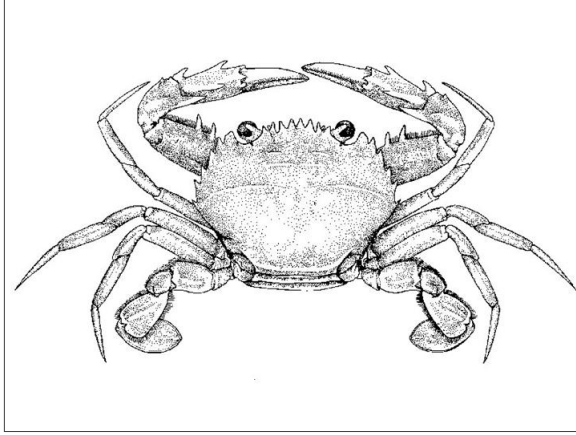
### 2.5. References

Poore, G.C.B. 2004. Marine decapod Crustacea of southern Australia. A guide to identification (with chapter on Stomatopoda by Shane Ahyong). CSIRO Publishing: Melbourne. 574 pp.

### 2.6. Web Links

**Charybdis miles PDF:** [http://researchdata.museum.vic.gov.au/padil/pdfs/Charybdis\\_miles.pdf](http://researchdata.museum.vic.gov.au/padil/pdfs/Charybdis_miles.pdf)

### 3. Diagnostic Images



Drawing of *Charybdis miles* showing shape of carapace  
**Carapace:** Kate Nolan (artist) Museum Victoria



Photo of preserved specimen  
Locality: off Ningaloo North, Western Australia, Australia  
**Chela:** E. Dane Museum Victoria

### Results Generated:

Wednesday, January 22, 2020

---