

# 1. PaDIL Species Factsheet



## Scientific Name:

*Acorythylus bosqi* (Schedl, 1938)

(Coleoptera: Curculionidae: Scolytinae: Cryphalini)

## Common Name

Bark Beetle

Live link: <http://www.padil.gov.au:80/pests-and-diseases/Pest/Main/141893>

## Image Library

Australian Biosecurity

Live link: <http://www.padil.gov.au:80/pests-and-diseases/>

## Partners for Australian Biosecurity image library



Museum Victoria

<http://museumvictoria.com.au/>



CRC National Plant Biosecurity

<http://www.crcplantbiosecurity.com.au/>



Plant Health Australia

<http://www.planthealthaustralia.com.au/>



Department of Agriculture, Fisheries and Forestry

<http://www.daff.gov.au/>



Department of Agriculture and Food, Western Australia

<http://www.agric.wa.gov.au/>

## 2. Species Information

### 2.1. Details

**Specimen Contact:** Museum Victoria - [discoverycentre@museum.vic.gov.au](mailto:discoverycentre@museum.vic.gov.au)

**Author:** McCaffrey, Sarah

**Citation:** McCaffrey, Sarah (2011) Bark Beetle (*Acorythylus bosqi*) Updated on 10/21/2011 Available online: PaDIL - <http://www.padil.gov.au>

**Image Use:** Free for use under the Creative Commons Attribution 3.0 Australia licence

### 2.2. URL

Live link: <http://www.padil.gov.au:80/pests-and-diseases/Pest/Main/141893>

### 2.3. Facets

**Commodity Overview:** Forestry

**Commodity Type:** Timber

**Distribution:** Central and South America

**Group:** Beetles

**Status:** Exotic species - absent from Australia

### 2.4. Diagnostic Notes

The genus *Acorythylus* can be distinguished from all known scolytid genera by the 3-segmented antennal funicle, with segments 1 and 3 small, segment 2 is greatly enlarged and about equal in length to the scape.

The genus is known from 5 South American species (*A. bosqi*, *A. gracilis*, *A. frontalis*, *A. pruni* and *A. frontalis*.)

*Acorythylus bosqi* can be diagnosed from other *Acorythylus* species by:

- Body length: 1.5-1.7mm
- Elytra without any indications of striae on disc or declivity, all punctured confused; frons convex in both sexes.

**\*\*Source:\*\***

Wood, S. (2007). Bark and Ambrosia beetles of South America (Coleoptera: Scolytidae). Monte L. Bean Life Science Museum. Brigham Young University, Provo, Utah. 900pp.

### 3. Diagnostic Images



Chile, Vina del Mar, Miraflores, Olmo,  
October 2010, J. Ocampo  
**Antenna Image:** Sarah McCaffrey Museum  
Victoria



Chile, Vina del Mar, Miraflores, Olmo,  
October 2010, J. Ocampo  
**Dorsal Image:** Sarah McCaffrey Museum  
Victoria



Chile, Vina del Mar, Miraflores, Olmo,  
October 2010, J. Ocampo  
**Elytra Image:** Sarah McCaffrey Museum  
Victoria



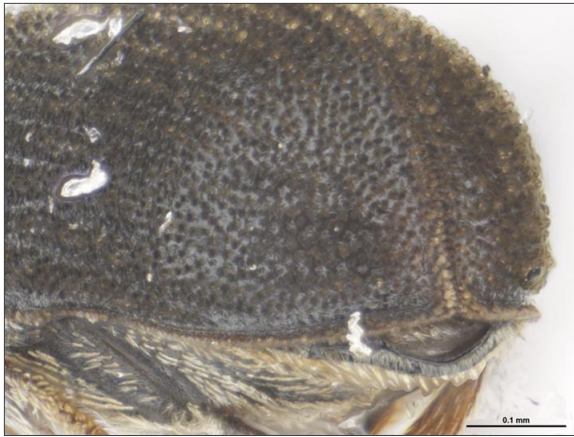
Chile, Vina del Mar, Miraflores, Olmo,  
October 2010, J. Ocampo  
**Head Front Image:** Sarah McCaffrey  
Museum Victoria



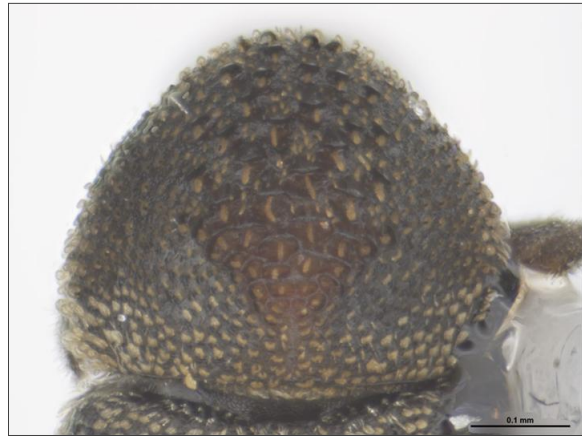
Chile, Vina del Mar, Miraflores, Olmo,  
October 2010, J. Ocampo  
**Head Side Image:** Sarah McCaffrey  
Museum Victoria



Chile, Vina del Mar, Miraflores, Olmo,  
October 2010, J. Ocampo  
**Lateral Image:** Sarah McCaffrey Museum  
Victoria



Chile, Vina del Mar, Miraflores, Olmo,  
October 2010, J. Ocampo  
**Posterior Image:** Sarah McCaffrey Museum  
Victoria



Chile, Vina del Mar, Miraflores, Olmo,  
October 2010, J. Ocampo  
**Pronotum Image:** Sarah McCaffrey Museum  
Victoria



Chile, Vina del Mar, Miraflores, Olmo,  
October 2010, J. Ocampo  
**Thorax Side Image:** Sarah McCaffrey  
Museum Victoria



Chile, Vina del Mar, Miraflores, Olmo,  
October 2010, J. Ocampo  
**Ventral Image:** Sarah McCaffrey Museum  
Victoria

## Results Generated:

Sunday, January 19, 2020

---