

1. PaDIL Species Factsheet



Scientific Name:

Lasioglossum (Chilalictus) lanarium (Smith)
(Hymenoptera: Halictidae: Halictinae: Halictini)

Common Name

Native lanarium halictid

Live link: <http://www.padil.gov.au:80/pollinators/Pest/Main/138279>

Image Library

Australian Pollinators

Live link: <http://www.padil.gov.au:80/pollinators/>

Partners for Australian Pollinators image library



Western Australian Museum
<http://www.museum.wa.gov.au/>



South Australian Museum
<http://www.samuseum.sa.gov.au/>



Museum Victoria
<http://museumvictoria.com.au/>



Australian Museum
<http://australianmuseum.net.au/>

2. Species Information

2.1. Details

Specimen Contact: Museum Victoria - discoverycentre@museum.vic.gov.au

Author: Walker, K.

Citation: Walker, K. (2009) Native lanarium halictid (*Lasioglossum (Chilalictus) lanarium*) Updated on 10/1/2011

Available online: PaDIL - <http://www.padil.gov.au>

Image Use: Free for use under the Creative Commons Attribution 3.0 Australia licence

2.2. URL

Live link: <http://www.padil.gov.au:80/pollinators/Pest/Main/138279>

2.3. Facets

Status: Native Australian Beneficial Species

Host Genera: Fresh Flowers

Bio-Region: Australasian - Oceanian

Host Family: Campanulaceae, Aizoaceae, Anacardiaceae, Asteraceae, Caesalpiniaceae, Casuarinaceae, Compositae, Convolvulaceae, Cruciferae, Cupressaceae, Dilleniaceae, Dipsacaceae, Fabaceae, Goodeniaceae, Iridaceae, Labiatae, Liliaceae, Linaceae, Malvaceae, Myoporaceae, Myrtaceae, Onagraceae, Orchidaceae, Oxalidaceae, Papaveraceae, Pittosporaceae, Polygonaceae, Proteaceae, Ranunculaceae, Rosaceae, Sapindaceae, Thymelaeaceae, Xanthorrhoeaceae, Zygophyllaceae

Body length / colours: Both sexes mesoscutum non-metallic, Body length large - ie greater than 9mm - Female, Female mesoscutum and metasoma black, Female metasoma black, Body length medium - less than 9mm greater than 5mm - Female

Head Characters: Male flagellum length less than head width, Male frons densely hirsute to level of median ocellus

Visitation Host Families: Aizoaceae, Anacardiaceae, Campanulaceae, Casuarinaceae, Compositae, Convolvulaceae, Cupressaceae, Dilleniaceae, Dipsacaceae, Fabaceae, Goodeniaceae, Iridaceae, Labiatae, Liliaceae, Malvaceae, Meliaceae, Myoporaceae, Myrtaceae, Orchidaceae, Oxalidiaceae, Papaveraceae, Pittosporaceae, Polygonaceae, Proteaceae, Ranunculaceae, Rosaceae, Sapindaceae, Xanthorrhoeaceae

Female Labrum: Basal box with tubercles, Distal process lateral teeth hooked, Distal process semi-rectangular shaped, Distal process lateral keels weakly developed

Leg Characters: Hind basitibial plate obtuse, Inner hind tibial spur with one tooth

Male Genitalia: Retrorse well developed, S7 apically elongate and narrowed

Mesosomal Characters: Female scutum surface dull, Female scutum anterior margin with mesial projection, Female scutum densely punctate mesially, Female scutum vestiture sparse, Female pronotum with obtuse dorsolateral angles

Mesoventral Characters: Female mesoventral hair simple

Metasomal Characters: Female T1 punctate, Male S2- S4 with plumose hair hair bands, Female metasoma with full and lateral tomentum across tergites

Propodeum Sculpture: Dorsal rim with no carinae at all, Dorsal sculpture ruguloso-striolate, Dorsal sculpture weakly striolate

Forewing Venation: Male 2nd r-m as strong as 1st r-m

2.4. Diagnostic Notes

Lasioglossum (Chilalictus) lanarium (Smith, 1853)

Halictus lanarius Smith, F. 1853. Catalogue of Hymenopterous Insects in the Collection of the British Museum. Part I. Andrenidae and Apidae. London : British Museum 197 pp. [57].

Type data: Holotype BMNH Hym.17.a.894 ?, Hunter River, NSW.

Halictus lanuginosus Smith, F. 1879. Descriptions of New Species of Hymenoptera in the Collection of the British Museum. London : British Museum xxi 240 pp. [34].

Type data: Syntype(s) BMNH ? ? (a male specimen is labelled 'type' and has registration number Hym.17.a.901), Australia.

Halictus mitchelli Cockerell, T.D.A. 1906. New Australian bees in the collection of the British Museum. II. Entomologist 39: 56–60 [58].

Type data: Holotype BMNH Hym.17.a.933 ?, Hobart, TAS.

3. Diagnostic Images



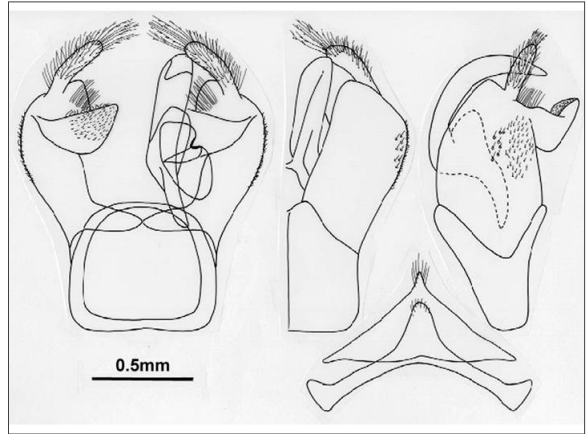
Australia: Melbourne
Dorsal view - female: Ken Walker Museum
Victoria



Australia: Melbourne
Dorsal view - male: Ken Walker Museum
Victoria



Australia: Melbourne
Gaster ventral view - male: Ken Walker
Museum Victoria



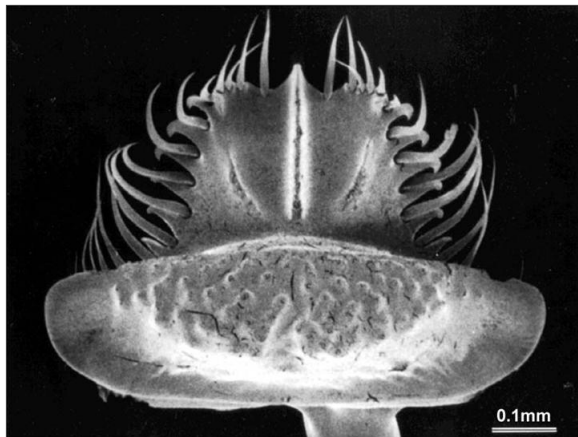
Vic. Echuca, 2 Nov 1983, EME.
Genitalia - male: Ken Walker Museum
Victoria



Australia: Melbourne
Head front - female: Ken Walker Museum
Victoria



Australia: Melbourne
Head front - male: Ken Walker Museum
Victoria



ACT Canberra, 14 Jan 1982
Labrum: Ken Walker Museum Victoria



Australia: Melbourne
Lateral view - female: Ken Walker Museum Victoria



Australia: Melbourne
Lateral view - male: Ken Walker Museum Victoria



Australia: Melbourne
Mesoscutum - female: Ken Walker Museum Victoria



Australia: Melbourne
Metasoma - female: Ken Walker Museum Victoria



Australia: Melbourne
Propodeum - female: Ken Walker Museum Victoria

4. Other Images

Results Generated:

Saturday, January 25, 2020
