

# 1. PaDIL Species Factsheet



## Scientific Name:

*Amegilla (Notomegilla) chlorocyanea* (Cockerell, 1914)  
(Hymenoptera: Apidae: Apinae: Anthophorini)

## Common Name

Blue banded bee

Live link: <http://www.padil.gov.au:80/pollinators/Pest/Main/138580>

## Image Library

Australian Pollinators

Live link: <http://www.padil.gov.au:80/pollinators/>

## Partners for Australian Pollinators image library



Western Australian Museum  
<http://www.museum.wa.gov.au/>



South Australian Museum  
<http://www.samuseum.sa.gov.au/>



Museum Victoria  
<http://museumvictoria.com.au/>



Australian Museum  
<http://australianmuseum.net.au/>

## 2. Species Information

### 2.1. Details

**Specimen Contact:** Australian Museum -

**Author:** Walker, K.

**Citation:** Walker, K. (2009) Blue banded bee (*Amegilla (Notomegilla) chlorocyanea*) Updated on 1/28/2017

Available online: PaDIL - <http://www.padil.gov.au>

**Image Use:** Free for use under the Creative Commons Attribution 3.0 Australia licence

### 2.2. URL

Live link: <http://www.padil.gov.au:80/pollinators/Pest/Main/138580>

### 2.3. Facets

**Status:** Native Australian Beneficial Species

**Host Genera:** Fresh Flowers

**Bio-Region:** Australasian - Oceanian

**Host Family:** Cruciferae, Myrtaceae, Polygalaceae, Proteaceae, Rutaceae

### 2.4. Diagnostic Notes

*Amegilla (Notomegilla) chlorocyanea* (Cockerell, 1914) *Anthophora chlorocyanea* Cockerell, T.D.A. 1914. Descriptions and records of bees. LXIV. Annals and Magazine of Natural History 8 14: 464–472. Type data: Syntype(s) BMNH 2&#X2640, Clare, SA. Syn: *Anthophora luteola* Rayment, T. 1944. A critical revision of species in the zonata group of *Anthophora* by new characters (Part I). Treubia (Japanese edition) 1: 1–30 [dated 1942, actual date of issue 1944] [27]. Type data: Syntype(s) ANIC &#X2642;&#X2640, Orroroo, SA. Syn: *Anthophora tinsleyella* Rayment, T. 1944. A critical revision of species in the zonata group of *Anthophora* by new characters (Part I). Treubia (Japanese edition) 1: 1–30 [dated 1942, actual date of issue 1944] [29]. Type data: Syntype(s) whereabouts unknown &#X2642;&#X2640, MacIntosh Holding, via Edungalba, QLD (a specimen in the ANIC labelled 'type' bears a locality which was not given in the original description).

### 2.5. Web Links

**AFD:** <http://www.environment.gov.au/biodiversity/abrs/online-resources/fauna/afd/taxa/7ea72178-0e49-447e-8389-76e7066f64ef>

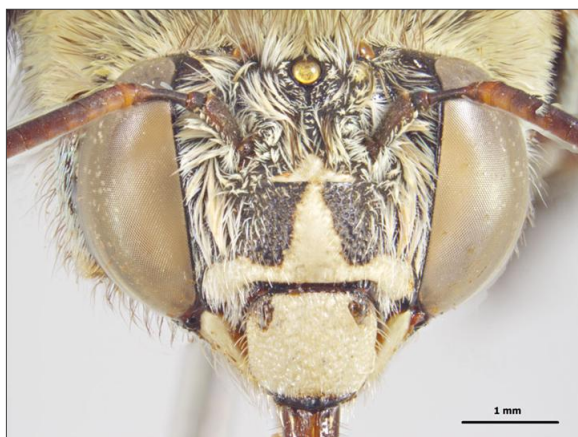
### 3. Diagnostic Images



35km E Cobar, NSW, 21 November 1988,  
N. W. Rodd  
**Dorsal Image - Male:** Sarah McCaffrey  
Museum Victoria



Vic. Kerang, 6 Oct 1946, RET.  
**Dorsal view - female:** Ken Walker Museum  
Victoria



35km E Cobar, NSW, 21 November 1988,  
N. W. Rodd  
**Head Front Image - Female:** Sarah  
McCaffrey Museum Victoria



35km E Cobar, NSW, 21 November 1988,  
N. W. Rodd  
**Head Front Image - Male:** Sarah McCaffrey  
Museum Victoria



35km E Cobar, NSW, 21 November 1988,  
N. W. Rodd  
**Lateral Image - Female:** Sarah McCaffrey  
Museum Victoria



35km E Cobar, NSW, 21 November 1988,  
N. W. Rodd  
**Lateral Image - Male:** Sarah McCaffrey  
Museum Victoria



35km E Cobar, NSW, 21 November 1988,  
N. W. Rodd  
**Mesoscutum Image - Female:** Sarah  
McCaffrey Museum Victoria



35km E Cobar, NSW, 21 November 1988,  
N. W. Rodd  
**Metasoma Image - Female:** Sarah  
McCaffrey Museum Victoria



35km E Cobar, NSW, 21 November 1988,  
N. W. Rodd  
**Metasoma Image - Male:** Sarah McCaffrey  
Museum Victoria



35km E Cobar, NSW, 21 November 1988,  
N. W. Rodd  
**Thorax Side Image - Female:** Sarah  
McCaffrey Museum Victoria

## Results Generated:

Tuesday, December 10, 2019

---