

Image Library: Barrow Island QIM

Live link: <http://www.padil.gov.au:80/barrow-island/>

86 Species returned from Query: Region : CTC

Ant - *Leptanilla swani*: Live link: <http://www.padil.gov.au:80/barrow-island/Pest/Main/136775>



Leptanilla swani Wheeler
(Hymenoptera: Formicidae: Leptanillinae)
Reliability: High
Status: Native to Barrow Island

Ant-like flower beetle - *Formicomus* sp. 1: Live link: <http://www.padil.gov.au:80/barrow-island/Pest/Main/136853>



Formicomus sp. 1 -
(Coleoptera: Anthicidae)
Reliability: High
Status: Native to Barrow Island

Antlion - *Bandidus* cf. *exilis*: Live link: <http://www.padil.gov.au:80/barrow-island/Pest/Main/137023>



Bandidus cf. *exilis* (Esben-Petersen)
(Neuroptera: Myrmeleontidae:
Distoleontinae)
Reliability: High
Status: Native to Barrow Island

Antlion - *Bandidus* cf. *fuscus*: Live link: <http://www.padil.gov.au:80/barrow-island/Pest/Main/137015>



Bandidus cf. *fuscus* New
(Neuroptera: Myrmeleontidae:
Distoleontinae)
Reliability: High
Status: Native to Barrow Island

Antlion - *Myrmeleon croceicollis*: Live link: <http://www.padil.gov.au:80/barrow-island/Pest/Main/137018>



Myrmeleon croceicollis Gerstaecker
(Neuroptera: Myrmeleontidae:
Myrmeleontinae)
Reliability: High
Status: Native to Barrow Island

Auger Borer - *Bostrychopsis jesuita*: Live link: <http://www.padil.gov.au:80/barrow-island/Pest/Main/136783>



Bostrychopsis jesuita Fabricius
(Coleoptera: Bostrichidae)
Reliability: High
Status: Native to Barrow Island

Big-headed ant - *Pheidole mjobergi*: Live link: <http://www.padil.gov.au:80/barrow-island/Pest/Main/136719>



Pheidole mjobergi Forel
(Hymenoptera: Formicidae: Myrmicinae)
Reliability: High
Status: Native to Barrow Island

Big-headed ant - *Pheidole variabilis*: Live link: <http://www.padil.gov.au:80/barrow-island/Pest/Main/136723>



Pheidole variabilis Mayr
(Hymenoptera: Formicidae: Myrmicinae)
Reliability: High
Status: Native to Barrow Island

Bristle Millipede - *Unixenus mjobergi*: Live link: <http://www.padil.gov.au:80/barrow-island/Pest/Main/137445>



Unixenus mjobergi (Verhoeff)
(Diplopoda: Polyxenida: Polyxenidae)
Reliability: High
Status: Native to Barrow Island

Buddelundia sp. 3: Live link: <http://www.padil.gov.au:80/barrow-island/Pest/Main/137003>



Buddelundia sp. 3 -
(Isopoda: Armadillidae)
Reliability: High
Status: Native to Barrow Island

Carabid sp 1: Live link: <http://www.padil.gov.au:80/barrow-island/Pest/Main/136784>



Carabidae sp 1 Genus and Species not determined
(Coleoptera: Carabidae)
Reliability: High
Status: Native to Barrow Island

Checkered beetle - *Alleleidea sp 1*: Live link: <http://www.padil.gov.au:80/barrow-island/Pest/Main/136833>



Alleleidea sp 1 -
(Coleoptera: Cleridae)
Reliability: High
Status: Native to Barrow Island

Cockroach - *Calolampra BWI_0506*: Live link: <http://www.padil.gov.au:80/barrow-island/Pest/Main/136983>



Calolampra BWI_0506 na
(Blattodea: Blaberidae: Epilamprinae)
Reliability: High
Status: Native to Barrow Island

Cockroach - Ellipsoidon sp.VN3: Live link: <http://www.padil.gov.au:80/barrow-island/Pest/Main/136988>



Ellipsoidon sp. VN3 -
(Blattodea: Ectobiidae:
Pseudophyllodromiinae)
Reliability: High
Status: Native to Barrow Island

Crevice Weaver Spider - Wandella waldockae: Live link: <http://www.padil.gov.au:80/barrow-island/Pest/Main/137130>



Wandella waldockae -
(Araneae: Filistatidae)
Reliability: High
Status: Native to Barrow Island

Daddy Long Legs Spider- Crossopriza lyoni: Live link: <http://www.padil.gov.au:80/barrow-island/Pest/Main/137052>



Crossopriza lyoni Mello-Leitao
(Araneae: Pholcidae)
Reliability: High
Status: Non Indigenous Species to Barrow Island - present

Dustywing - Coniopteryx sp. 1: Live link: <http://www.padil.gov.au:80/barrow-island/Pest/Main/137016>



Coniopteryx sp. 1 -
(Neuroptera: Coniopterygidae:
Coniopteryginae)
Reliability: High
Status: Native to Barrow Island

Dustywing - Heteroconis nigricornis: Live link: <http://www.padil.gov.au:80/barrow-island/Pest/Main/137030>



Heteroconis nigricornis Meinander
(Neuroptera: Coniopterygidae:
Aleuropteryginae)
Reliability: High
Status: Native to Barrow Island

Flower Spider - Thomisid Genus 1 sp 1: Live link: <http://www.padil.gov.au:80/barrow-island/Pest/Main/137070>



Thomisidae Genus 1 sp 1 -
(Araneae: Thomisidae)
Reliability: High
Status: Native to Barrow Island

Furnace ant - Melophorus biroi: Live link: <http://www.padil.gov.au:80/barrow-island/Pest/Main/136687>



Melophorus biroi Forel
(Hymenoptera: Formicidae: Formicinae)
Reliability: High
Status: Native to Barrow Island

Furnace ant - *Melophorus hirsutipes*: Live link: <http://www.padil.gov.au:80/barrow-island/Pest/Main/136688>



Melophorus hirsutipes Heterick,
Castalanelli & Shattuck
(Hymenoptera: Formicidae: Formicinae)
Reliability: High
Status: Native to Barrow Island

Furnace ant - *Melophorus teretiotus*: Live link: <http://www.padil.gov.au:80/barrow-island/Pest/Main/136684>



Melophorus teretiotus Heterick,
Castalanelli & Shattuck
(Hymenoptera: Formicidae: Formicinae)
Reliability: High
Status: Native to Barrow Island

Furnace ant - *Melophorus sulla*: Live link: <http://www.padil.gov.au:80/barrow-island/Pest/Main/136689>



Melophorus sulla Forel
(Hymenoptera: Formicidae: Formicinae)
Reliability: High
Status: Native to Barrow Island

Furnace ant - *Melophorus turneri*: Live link: <http://www.padil.gov.au:80/barrow-island/Pest/Main/136686>



Melophorus turneri Forel
(Hymenoptera: Formicidae: Formicinae)
Reliability: High
Status: Native to Barrow Island

Giant snappy ant- *Odontomachus ruficeps*: Live link: <http://www.padil.gov.au:80/barrow-island/Pest/Main/136770>



Odontomachus ruficeps Smith
(Hymenoptera: Formicidae: Ponerinae)
Reliability: High
Status: Native to Barrow Island

Gracile tyrant ant - *Iridomyrmex minor* : Live link: <http://www.padil.gov.au:80/barrow-island/Pest/Main/136690>



Iridomyrmex minor Forel
(Hymenoptera: Formicidae:
Dolichoderinae)
Reliability: High
Status: Native to Barrow Island

Ground Spider - *Australutica* sp 1: Live link: <http://www.padil.gov.au:80/barrow-island/Pest/Main/137095>



Australutica sp 1 -
(Araneae: Zodariidae)
Reliability: High
Status: Native to Barrow Island

Ground Spider - Gnaphosid Genus 1 sp 1: Live link: <http://www.padil.gov.au:80/barrow-island/Pest/Main/137111>



Gnaphosidae Genus 1 sp 1 -
(Araneae: Gnaphosidae)
Reliability: High
Status: Native to Barrow Island

Ground Spider - Gnaphosid Genus 5 sp 1: Live link: <http://www.padil.gov.au:80/barrow-island/Pest/Main/137099>



Gnaphosidae Genus 5 sp 1 -
(Araneae: Gnaphosidae)
Reliability: High
Status: Native to Barrow Island

Ground Spider - Habronestes sp 1: Live link: <http://www.padil.gov.au:80/barrow-island/Pest/Main/137091>



Habronestes sp 1 -
(Araneae: Zodariidae)
Reliability: High
Status: Native to Barrow Island

Ground Spider - Lamponina scutata: Live link: <http://www.padil.gov.au:80/barrow-island/Pest/Main/137074>



Lamponina scutata -
(Araneae: Lamponidae)
Reliability: High
Status: Native to Barrow Island

Ground Spider - Minasteron minusculum: Live link: <http://www.padil.gov.au:80/barrow-island/Pest/Main/137104>



Minasteron minusculum -
(Araneae: Zodariidae)
Reliability: High
Status: Native to Barrow Island

Hairy black mono ant- Monomorium antipodum: Live link: <http://www.padil.gov.au:80/barrow-island/Pest/Main/136762>



Monomorium antipodum --
(Hymenoptera: Formicidae: Myrmicinae)
Reliability: High
Status: Native to Barrow Island

Huntsman Spider - Neosparassus sp 1: Live link: <http://www.padil.gov.au:80/barrow-island/Pest/Main/137122>



Neosparassus sp 1 -
(Araneae: Sparassidae)
Reliability: High
Status: Native to Barrow Island

Jumping Spider - *Simaetha tenuior*: Live link: <http://www.padil.gov.au:80/barrow-island/Pest/Main/137107>



Simaetha tenuior -
(Araneae: Salticidae)
Reliability: High
Status: Native to Barrow Island

Jumping Spider - *Cytaea sp 1*: Live link: <http://www.padil.gov.au:80/barrow-island/Pest/Main/137090>



Cytaea sp 1 -
(Araneae: Salticidae)
Reliability: High
Status: Native to Barrow Island

Jumping Spider - *Grayenulla sp 1*: Live link: <http://www.padil.gov.au:80/barrow-island/Pest/Main/137058>



Grayenulla sp 1 -
(Araneae: Salticidae)
Reliability: High
Status: Native to Barrow Island

Jumping Spider - *Maratus sp 6 (Lycidas)*: Live link: <http://www.padil.gov.au:80/barrow-island/Pest/Main/137103>



Maratus sp 6 -
(Araneae: Salticidae)
Reliability: High
Status: Native to Barrow Island

Keeled Millipede - *Polydesmida Boreoheperus dubitalis*: Live link: <http://www.padil.gov.au:80/barrow-island/Pest/Main/137444>



Polydesmida Boreoheperus dubitalis Car
2013
(Diplopoda: Polydesmida:
Paradoxosomatidae)
Reliability: High
Status: Native to Barrow Island

Lacewing- *Mestressa subfasciata*: Live link: <http://www.padil.gov.au:80/barrow-island/Pest/Main/137012>



Mestressa subfasciata Banks
(Neuroptera: Myrmeleontidae)
Reliability: High
Status: Native to Barrow Island

Leaf beetle - Chrysomelid *Longitarsus sp 1*: Live link: <http://www.padil.gov.au:80/barrow-island/Pest/Main/136844>



Chrysomelidae Longitarsus sp 1 -
(Coleoptera: Chrysomelidae)
Reliability: High
Status: Native to Barrow Island

Leaf beetle - Chrysomelid sp 9: Live link: <http://www.padil.gov.au:80/barrow-island/Pest/Main/136840>



Chrysomelidae sp 9 sp.9
(Coleoptera: Chrysomelidae)
Reliability: High
Status: Native to Barrow Island

leaf beetle - Monolepta sp. 1: Live link: <http://www.padil.gov.au:80/barrow-island/Pest/Main/136842>



Monolepta sp. 1
(Coleoptera: Chrysomelidae)
Reliability: High
Status: Native to Barrow Island

Little spiny ant- *Polyrhachis inconspicua*: Live link: <http://www.padil.gov.au:80/barrow-island/Pest/Main/136701>



Polyrhachis inconspicua Emery
(Hymenoptera: Formicidae: Formicinae)
Reliability: High
Status: Native to Barrow Island

Longhorn Beetle - Cerambycid sp 2: Live link: <http://www.padil.gov.au:80/barrow-island/Pest/Main/136884>



Cerambycidae sp 2 -
(Coleoptera: Cerambycidae)
Reliability: High
Status: Native to Barrow Island

Long-legged Spiders - *Cheiracanthium* sp 1: Live link: <http://www.padil.gov.au:80/barrow-island/Pest/Main/137096>



Cheiracanthium sp 1 -
(Araneae: Eutichuridae)
Reliability: High
Status: Native to Barrow Island

Long-legged Spiders - Miturgid *Miturga* sp 1: Live link: <http://www.padil.gov.au:80/barrow-island/Pest/Main/137139>



Miturgidae Miturga sp 1 -
(Araneae: Miturgidae)
Reliability: High
Status: Native to Barrow Island

Long-Spinneret Ground Spider - *Cryptoerithus occultus*: Live link: <http://www.padil.gov.au:80/barrow-island/Pest/Main/137110>



Cryptoerithus occultus -
(Araneae: Prodidomidae)
Reliability: High
Status: Native to Barrow Island

Long-Spinneret Ground Spiders - *Nomindra leeuweni*: Live link: <http://www.padil.gov.au:80/barrow-island/Pest/Main/137076>



Nomindra leeuweni -
(Araneae: Prodidomidae)
Reliability: High
Status: Native to Barrow Island

Lynx Spider - *Oxyopes* sp 2: Live link: <http://www.padil.gov.au:80/barrow-island/Pest/Main/137124>



Oxyopes sp 2 -
(Araneae: Oxyopidae)
Reliability: High
Status: Native to Barrow Island

Mesh Web Weavers - Dictynid Genus 1 sp 1: Live link: <http://www.padil.gov.au:80/barrow-island/Pest/Main/137097>



Dictynidae Genus 1 sp 1 -
(Araneae: Dictynidae)
Reliability: High
Status: Native to Barrow Island

Mono ant- *Monomorium disetigerum*: Live link: <http://www.padil.gov.au:80/barrow-island/Pest/Main/136761>



Monomorium disetigerum Heterick
(Hymenoptera: Formicidae: Myrmicinae)
Reliability: High
Status: Native to Barrow Island

Mono ant- *Monomorium eremophilum*: Live link: <http://www.padil.gov.au:80/barrow-island/Pest/Main/136767>



Monomorium eremophilum Heterick
(Hymenoptera: Formicidae: Myrmicinae)
Reliability: High
Status: Native to Barrow Island

Mono ant- *Monomorium sydneyense*: Live link: <http://www.padil.gov.au:80/barrow-island/Pest/Main/136746>



Monomorium sydneyense Forel
(Hymenoptera: Formicidae: Myrmicinae)
Reliability: High
Status: Native to Barrow Island

Northern meat ant- *Iridomyrmex sanguineus*: Live link: <http://www.padil.gov.au:80/barrow-island/Pest/Main/136740>



Iridomyrmex sanguineus Forel
(Hymenoptera: Formicidae:
Dolichoderinae)
Reliability: High
Status: Native to Barrow Island

Orbweaver spider - *Larinia montagui*: Live link: <http://www.padil.gov.au:80/barrow-island/Pest/Main/137066>



Larinia montagui -
(Araneae: Araneidae)
Reliability: High
Status: Native to Barrow Island

Orbweaver spider - *Zygiella* sp. 1: Live link: <http://www.padil.gov.au:80/barrow-island/Pest/Main/137119>



Zygiella sp. 1 -
(Araneae: Araneidae)
Reliability: High
Status: Native to Barrow Island

Owlfly - *Suhpalacsa barrowensis*: Live link: <http://www.padil.gov.au:80/barrow-island/Pest/Main/137013>



Suhpalacsa barrowensis New
(Neuroptera: Ascalaphidae: Ascalaphinae)
Reliability: High
Status: Native to Barrow Island

***Paraparatrechina minutula*:** Live link: <http://www.padil.gov.au:80/barrow-island/Pest/Main/136700>



Paraparatrechina minutula Forel
(Hymenoptera: Formicidae: Formicinae)
Reliability: High
Status: Native to Barrow Island

Pennant ant - *Tetramorium spininode*: Live link: <http://www.padil.gov.au:80/barrow-island/Pest/Main/136721>



Tetramorium spininode Bolton
(Hymenoptera: Formicidae: Myrmicinae)
Reliability: High
Status: Native to Barrow Island

Pennant ant - *Tetramorium striolatum*: Live link: <http://www.padil.gov.au:80/barrow-island/Pest/Main/136725>



Tetramorium striolatum Viehmayer
(Hymenoptera: Formicidae: Myrmicinae)
Reliability: High
Status: Native to Barrow Island

Pennant ant - *Tetramorium striolatum* cluster sp. JDM 36: Live link: <http://www.padil.gov.au:80/barrow-island/Pest/Main/136722>



Tetramorium striolatum cluster sp. JDM 36
Viehmayr
(Hymenoptera: Formicidae: Myrmicinae)
Reliability: High
Status: Native to Barrow Island

Savanna black tree-ant - *Tetraponera punctulata*: Live link: <http://www.padil.gov.au:80/barrow-island/Pest/Main/136678>



Tetraponera punctulata Smith
(Hymenoptera: Formicidae: Pseudomyrmecinae)
Reliability: High
Status: Native to Barrow Island

Seed weevil - Apioninae sp. 1: Live link: <http://www.padil.gov.au:80/barrow-island/Pest/Main/136809>



Apioninae sp. 1 -
(Coleoptera: Brentidae: Apioninae)
Reliability: High
Status: Native to Barrow Island

Spinifex ant - *Ochetellus* sp. JDM 527: Live link: <http://www.padil.gov.au:80/barrow-island/Pest/Main/136757>



Ochetellus sp. JDM 527 -
(Hymenoptera: Formicidae: Dolichoderinae)
Reliability: High
Status: Native to Barrow Island

Spiny ant - *Polyrhachis* sp. JDM 808: Live link: <http://www.padil.gov.au:80/barrow-island/Pest/Main/136709>



Polyrhachis sp. JDM 808 -
(Hymenoptera: Formicidae: Formicinae)
Reliability: High
Status: Native to Barrow Island

Spiny ant- *Polyrhachis* (*Campomyrma*) sp. JDM 1010: Live link: <http://www.padil.gov.au:80/barrow-island/Pest/Main/136707>



Polyrhachis (Campomyrma) sp. JDM 1010 -
(Hymenoptera: Formicidae: Formicinae)
Reliability: High
Status: Native to Barrow Island

Spiny ant- *Polyrhachis crawleyi*: Live link: <http://www.padil.gov.au:80/barrow-island/Pest/Main/136731>



Polyrhachis crawleyi Forel
(Hymenoptera: Formicidae: Formicinae)
Reliability: High
Status: Native to Barrow Island

Springtail- *Hemistoma thermophila*: Live link: <http://www.padil.gov.au:80/barrow-island/Pest/Main/137037>



Hemisotoma thermophila (Axelson)
(Collembola: Isotomidae)
Reliability: High
Status: Non Indigenous Species to Barrow
Island - present

Strobe ant - *Opisthopsis haddoni rufoniger*: Live link: <http://www.padil.gov.au:80/barrow-island/Pest/Main/136699>



Opisthopsis haddoni rufoniger Forel
(Hymenoptera: Formicidae: Formicinae)
Reliability: High
Status: Native to Barrow Island

Sugar ant - *Camponotus donnellani*: Live link: <http://www.padil.gov.au:80/barrow-island/Pest/Main/136773>



Camponotus donnellani Shattuck & McArthur
(Hymenoptera: Formicidae: Formicinae)
Reliability: High
Status: Native to Barrow Island

Sugar ant - *Camponotus evae zeuxis*: Live link: <http://www.padil.gov.au:80/barrow-island/Pest/Main/136733>



Camponotus evae zeuxis Forel
(Hymenoptera: Formicidae: Formicinae)
Reliability: High
Status: Native to Barrow Island

Sugar ant - *Camponotus fieldeae*: Live link: <http://www.padil.gov.au:80/barrow-island/Pest/Main/136692>



Camponotus fieldeae Forel
(Hymenoptera: Formicidae: Formicinae)
Reliability: High
Status: Native to Barrow Island

Sugar ant - *Camponotus gibbinotus*: Live link: <http://www.padil.gov.au:80/barrow-island/Pest/Main/136772>



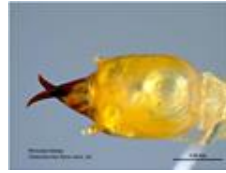
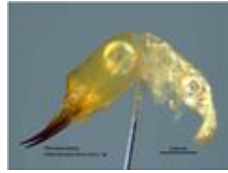
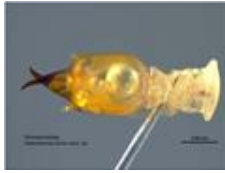
Camponotus gibbinotus Forel
(Hymenoptera: Formicidae: Formicinae)
Reliability: High
Status: Native to Barrow Island

Sugar ant - *Camponotus simpsoni*: Live link: <http://www.padil.gov.au:80/barrow-island/Pest/Main/136691>



Camponotus simpsoni McArthur
(Hymenoptera: Formicidae: Formicinae)
Reliability: High
Status: Native to Barrow Island

Termite- *Heterotermes ferox* sens. lat: Live link: <http://www.padil.gov.au:80/barrow-island/Pest/Main/137415>



Heterotermes ferox sens. lat Froggatt
 (Isoptera: Rhinotermitidae:
 Heterotermitinae)
 Reliability: High
 Status: Native to Barrow Island

Termite- *Microcerotermes serratus*: Live link: <http://www.padil.gov.au:80/barrow-island/Pest/Main/137414>



Microcerotermes serratus Froggatt
 (Isoptera: Termitidae: Termitinae)
 Reliability: High
 Status: Native to Barrow Island

Termite- *Nasutitermes triodiae*: Live link: <http://www.padil.gov.au:80/barrow-island/Pest/Main/137416>



Nasutitermes triodiae Froggatt
 (Isoptera: Termitidae: Nasutitermitinae)
 Reliability: High
 Status: Native to Barrow Island

Termite- *Schedorhinotermes nr. reticulatus*: Live link: <http://www.padil.gov.au:80/barrow-island/Pest/Main/137421>



Schedorhinotermes nr. reticulatus Froggatt
 (Isoptera: Rhinotermitidae:
 Rhinotermitinae)
 Reliability: High
 Status: Native to Barrow Island

Thief ant- *Solenopsis clarki*: Live link: <http://www.padil.gov.au:80/barrow-island/Pest/Main/136720>



Solenopsis clarki Crawley
 (Hymenoptera: Formicidae: Myrmicinae)
 Reliability: High
 Status: Native to Barrow Island

Tropical tyrant ant- *Iridomyrmex anceps*: Live link: <http://www.padil.gov.au:80/barrow-island/Pest/Main/136741>



Iridomyrmex anceps Roger
 (Hymenoptera: Formicidae:
 Dolichoderinae)
 Reliability: High
 Status: Native to Barrow Island

Tyrant ant - *Iridomyrmex chasei*: Live link: <http://www.padil.gov.au:80/barrow-island/Pest/Main/136755>



Iridomyrmex chasei Forel
 (Hymenoptera: Formicidae:
 Dolichoderinae)
 Reliability: High
 Status: Native to Barrow Island

Tyrant ant- *Iridomyrmex exsanguis*: Live link: <http://www.padil.gov.au:80/barrow-island/Pest/Main/136754>



Iridomyrmex exsanguis Forel
 (Hymenoptera: Formicidae:
 Dolichoderinae)
 Reliability: High
 Status: Native to Barrow Island

Urban Wall Spider- *Oecobius navus*: Live link: <http://www.padil.gov.au:80/barrow-island/Pest/Main/137051>



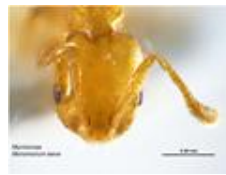
Oecobius navus Blackwall
 (Araneae: Oecobiidae)
 Reliability: High
 Status: Non Indigenous Species to Barrow
 Island - present

Wandering Spider - Zorid Genus 1 sp 1: Live link: <http://www.padil.gov.au:80/barrow-island/Pest/Main/137072>



Zoridae Genus 1 sp 1 -
 (Araneae: Zoridae)
 Reliability: High
 Status: Native to Barrow Island

Yellow mono ant- *Monomorium laeve*: Live link: <http://www.padil.gov.au:80/barrow-island/Pest/Main/136765>



Monomorium laeve Mayr
 (Hymenoptera: Formicidae: Myrmicinae)
 Reliability: High
 Status: Native to Barrow Island

Results Generated:

Tuesday, July 23, 2019

Click for live results:

<http://www.padil.gov.au:80/barrow-island/Search?queryText1=&queryType1=All&sortType=CommonName&viewType=Details&pageSize=all&page=1&facetItems=6686>

Image Library Sponsors:



Chevron - Gorgon



Museum Victoria



CRC National Plant Biosecurity