

## Image Library: New Zealand Biosecurity

Live link: <http://www.padil.gov.au:80/maf-border/>

12 Species returned from Query: Commodity Type : Citrus produce, Commodity Type : Yam

**Acarid Mite:** Live link: <http://www.padil.gov.au:80/maf-border/Pest/Main/140772>



No Image Available



*Tyrophagus javensis* (Oudemans, 1916)

(Acari: Astigmata: Acaridae: Acarinae)

Reliability: High

Status: 0 Unknown

**Bulb Mite:** Live link: <http://www.padil.gov.au:80/maf-border/Pest/Main/140762>



*Rhizoglyphus sp. I* Claparède, 1869

(Acari: Astigmata: Acaridae:

Rhizoglyphinae)

Reliability: High

Status: 0 Unknown

**Dried Fruit Beetle:** Live link: <http://www.padil.gov.au:80/maf-border/Pest/Main/140376>



*Carpophilus sp.*

(Coleoptera: Nitidulidae: Carpophilinae)

Reliability: High

Status: 0 Unknown

**Grass Moth:** Live link: <http://www.padil.gov.au:80/maf-border/Pest/Main/141453>



*Piletocera sp.*

(Lepidoptera: Crambidae: Spilomelinae)

Reliability: High

Status: 0 Unknown

**Legume Pod Borer:** Live link: <http://www.padil.gov.au:80/maf-border/Pest/Main/141609>



*Maruca vitrata* (Fabricius, 1787)

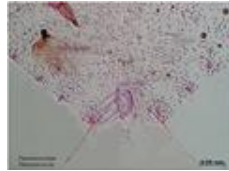
(Lepidoptera: Crambidae: Spilomelinae:

Spilomelini)

Reliability: High

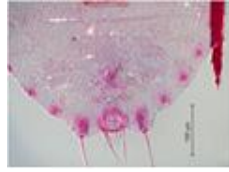
Status: 0 Unknown

**Mealybug:** Live link: <http://www.padil.gov.au:80/maf-border/Pest/Main/141216>



*Planococcus sp.*  
 (Hemiptera: Pseudococcidae:  
 Pseudococcinae)  
 Reliability: High  
 Status: 0 Unknown

**Mealybug:** Live link: <http://www.padil.gov.au:80/maf-border/Pest/Main/141195>



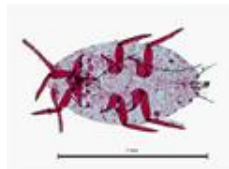
*Dysmicoccus sp.*  
 (Hemiptera: Pseudococcidae:  
 Pseudococcinae)  
 Reliability: High  
 Status: 0 Unknown

**Mould Mite:** Live link: <http://www.padil.gov.au:80/maf-border/Pest/Main/140775>



*Tyrophagus putrescentiae* (Schrank, 1781)  
 (Acari: Astigmata: Acaridae: Acarinae)  
 Reliability: High  
 Status: 0 Unknown

**Pacific Mealybug:** Live link: <http://www.padil.gov.au:80/maf-border/Pest/Main/141196>



No Image Available  
 PaDiL

*Planococcus minor* (Maskell, 1897)  
 (Hemiptera: Pseudococcidae:  
 Pseudococcinae)  
 Reliability: High  
 Status: 0 Unknown

**Palm Aphid:** Live link: <http://www.padil.gov.au:80/maf-border/Pest/Main/142925>



No Image Available  
 PaDiL

No Image Available  
 PaDiL

*Cerataphis lataniae* (Boisduval, 1867)  
 (Hemiptera: Aphididae)  
 Reliability: High  
 Status: 0 Unknown

**Pineapple Mealybug:** Live link: <http://www.padil.gov.au:80/maf-border/Pest/Main/141241>



*Dysmicoccus brevipes* (Cockerell, 1893)  
 (Hemiptera: Pseudococcidae:  
 Pseudococcinae)  
 Reliability: High  
 Status: 0 Unknown

**Pomace Fly:** Live link: <http://www.padil.gov.au:80/maf-border/Pest/Main/140536>



*Drosophila sp.*  
 (Diptera: Drosophilidae: Drosophilinae:  
 Drosophilini)  
 Reliability: High  
 Status: 0 Unknown

Results Generated:

Friday, April 19, 2019

Click for live results:

<http://www.padil.gov.au:80/maf->

[border/Search?queryText1=&queryType1=All&sortType=CommonName&viewType=Details&pageSize=all&page=1&facetItems=7736+8902](http://www.padil.gov.au:80/maf-border/Search?queryText1=&queryType1=All&sortType=CommonName&viewType=Details&pageSize=all&page=1&facetItems=7736+8902)

Image Library Sponsors:



Manaaki Whenua  
Landcare Research

Landcare Research — Manaaki Whenua



MPI (Ministry for Primary Industries)

