

Image Library: New Zealand Biosecurity

Live link: <http://www.padil.gov.au:80/maf-border/>

18 Species returned from Query: Commodity Type : Apiaceous produce

Alternaria dauci: Live link: <http://www.padil.gov.au:80/maf-border/Pest/Main/142987>



Alternaria dauci (J.G. Kühn) J.W. Groves & Skolko
(Ascomycota: Dothideomycetes:
Pleosporales: Pleosporaceae)
Reliability: High
Status: 1 NZ - Non-regulated species

Aphid: Live link: <http://www.padil.gov.au:80/maf-border/Pest/Main/141149>

No Image Available



No Image Available



No Image Available



Uroleucon sp.
(Hemiptera: Aphididae: Aphidinae:
Macrosiphini)
Reliability: High
Status: 0 Unknown

Armoured Scale: Live link: <http://www.padil.gov.au:80/maf-border/Pest/Main/141374>



Fiorinia proboscidea Green, 1900
(Hemiptera: Diaspididae)
Reliability: High
Status: 0 Unknown

Athelia rolfsii: Live link: <http://www.padil.gov.au:80/maf-border/Pest/Main/142993>



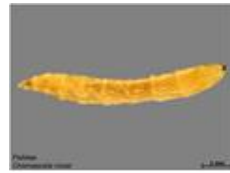
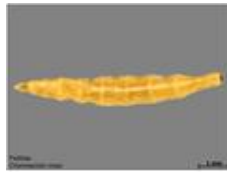
Athelia rolfsii (Curzi) C.C. Tu & Kimbr.
(Basidiomycota: Agaricomycetes:
Atheliales: Atheliaceae)
Reliability: High
Status: 1 NZ - Non-regulated species

Burrowing Nematode: Live link: <http://www.padil.gov.au:80/maf-border/Pest/Main/141263>



Radopholus similis (Cobb, 1893) Thorne, 1949
(Nematoda: Tylenchida: Pratylenchidae)
Reliability: High
Status: 0 Unknown

Carrot Fly: Live link: <http://www.padil.gov.au:80/maf-border/Pest/Main/140624>



Chamaepsila rosae (Fabricius, 1794)
(Diptera: Psilidae)
Reliability: High
Status: 0 Unknown

Cercospora apii: Live link: <http://www.padil.gov.au:80/maf-border/Pest/Main/142999>



Cercospora apii Fresen.
(Ascomycota: Dothideomycetes:
Capnodiales: Mycosphaerellaceae)
Reliability: High
Status: 1 NZ - Non-regulated species

Hawthorn-Parsley Aphid : Live link: <http://www.padil.gov.au:80/maf-border/Pest/Main/141135>



Dysaphis apiifolia (Theobald, 1923)
(Hemiptera: Aphididae: Aphidinae:
Macrosiphini)
Reliability: High
Status: 0 Unknown

Honeysuckle Aphid: Live link: <http://www.padil.gov.au:80/maf-border/Pest/Main/141138>



Hyadaphis foeniculi (Passerini, 1860)
(Hemiptera: Aphididae: Aphidinae:
Macrosiphini)
Reliability: High
Status: 0 Unknown

Javanese Root Knot Nematode: Live link: <http://www.padil.gov.au:80/maf-border/Pest/Main/141264>



Meloidogyne javanica (Treub, 1885)
Chitwood, 1949
(Nematoda: Aphelenchida:
Meloidogynidae: Meloidogyninae)
Reliability: High
Status: 0 Unknown

Lauxaniid Fly: Live link: <http://www.padil.gov.au:80/maf-border/Pest/Main/140543>



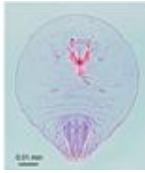
Poecilohetaerella sp.
(Diptera: Lauxaniidae)
Reliability: High
Status: 0 Unknown

Leaf-miner Fly: Live link: <http://www.padil.gov.au:80/maf-border/Pest/Main/140499>



Liriomyza sp.
(Diptera: Agromyzidae: Phytomyzinae)
Reliability: High
Status: 0 Unknown

Oleander Scale: Live link: <http://www.padil.gov.au:80/maf-border/Pest/Main/141280>



Aspidiotus nerii Bouché, 1833
 (Hemiptera: Diaspididae)
 Reliability: High
 Status: 0 Unknown

Pomace Fly: Live link: <http://www.padil.gov.au:80/maf-border/Pest/Main/140539>



Scaptomyza sp.
 (Diptera: Drosophilidae: Drosophilinae:
 Drosophilini)
 Reliability: High
 Status: 0 Unknown

Rove Beetle: Live link: <http://www.padil.gov.au:80/maf-border/Pest/Main/140481>

No Image Available



No Image Available



No Image Available



Pselaphophus sp.
 (Coleoptera: Staphylinidae: Pselaphinae:
 Pselaphini)
 Reliability: High
 Status: 0 Unknown

Southern Root-knot Nematode: Live link: <http://www.padil.gov.au:80/maf-border/Pest/Main/141261>



Meloidogyne incognita (Kofoid & White,
 1919) Chitwood, 1949
 (Nematoda: Aphelenchida:
 Meloidogynidae: Meloidogyninae)
 Reliability: High
 Status: 0 Unknown

Weevil: Live link: <http://www.padil.gov.au:80/maf-border/Pest/Main/140299>



Catoptes sp.
 (Coleoptera: Curculionidae: Entiminae:
 Tropiphorini)
 Reliability: High
 Status: 0 Unknown

Weevil: Live link: <http://www.padil.gov.au:80/maf-border/Pest/Main/140312>

No Image Available



No Image Available



No Image Available



Listroderes sp.
 (Coleoptera: Curculionidae: Cyclominae:
 Listroderini)
 Reliability: High
 Status: 0 Unknown

Results Generated:

Sunday, November 17, 2019

Click for live results:

<http://www.padil.gov.au:80/maf-border/Search?queryText1=&queryType1=All&sortType=CommonName&viewType=Details&pageSize=all&page=1&facetItems=8912>

Image Library Sponsors:



Landcare Research — Manaaki Whenua



MPI (Ministry for Primary Industries)

