

## Image Library: New Zealand Biosecurity

Live link: <http://www.padil.gov.au:80/maf-border/>

### 38 Species returned from Query: Pest Status : 2 NZ - Regulated pest

**Albugo candida:** Live link: <http://www.padil.gov.au:80/maf-border/Pest/Main/142959>



*Albugo candida* (Pers.) Roussel  
(Oomycota: Oomycetes: Albuginales:  
Albuginaceae)  
Reliability: High  
Status: 2 NZ - Regulated pest

**Bipolaris incurvata:** Live link: <http://www.padil.gov.au:80/maf-border/Pest/Main/142994>



*Bipolaris incurvata* (C. Bernard) Alcorn  
(Ascomycota: Dothideomycetes:  
Pleosporales: Pleosporaceae)  
Reliability: High  
Status: 2 NZ - Regulated pest

**Cercospora capsici:** Live link: <http://www.padil.gov.au:80/maf-border/Pest/Main/143002>



*Cercospora capsici* Heald & F.A. Wolf  
(Ascomycota: Dothideomycetes:  
Capnodiales: Mycosphaerellaceae)  
Reliability: High  
Status: 2 NZ - Regulated pest

**Cercospora citrullina:** Live link: <http://www.padil.gov.au:80/maf-border/Pest/Main/143003>



*Cercospora citrullina* Cooke  
(Ascomycota: Dothideomycetes:  
Capnodiales: Mycosphaerellaceae)  
Reliability: High  
Status: 2 NZ - Regulated pest

**Cercospora lactucae-sativae:** Live link: <http://www.padil.gov.au:80/maf-border/Pest/Main/143004>



*Cercospora lactucae-sativae* Sawada  
(Ascomycota: Dothideomycetes:  
Capnodiales: Mycosphaerellaceae)  
Reliability: High  
Status: 2 NZ - Regulated pest

**Cercospora melongenae:** Live link: <http://www.padil.gov.au:80/maf-border/Pest/Main/143005>



*Cercospora melongenae* Welles  
(Ascomycota: Dothideomycetes:  
Capnodiales: Mycosphaerellaceae)  
Reliability: High  
Status: 2 NZ - Regulated pest

**Choanephora cucurbitarum:** Live link: <http://www.padil.gov.au:80/maf-border/Pest/Main/143007>



*Choanephora cucurbitarum* (Berk. & Ravenel) Thaxt.  
(Zygomycota: Mucoromycotina:  
Mucorales: Choanephoraceae)  
Reliability: High  
Status: 2 NZ - Regulated pest

**Cocconia spurcaria:** Live link: <http://www.padil.gov.au:80/maf-border/Pest/Main/143011>



*Cocconia spurcaria* (Berk. & Broome) Arx  
(Ascomycota: Dothideomycetes:  
Parmulariaceae)  
Reliability: High  
Status: 2 NZ - Regulated pest

**Colletotrichum gloeosporioides:** Live link: <http://www.padil.gov.au:80/maf-border/Pest/Main/143016>



*Colletotrichum gloeosporioides* (Penz.)  
Penz. & Sacc.  
(Ascomycota: Sordariomycetes:  
Glomerellaceae)  
Reliability: High  
Status: 2 NZ - Regulated pest

**Cordana johnstonii:** Live link: <http://www.padil.gov.au:80/maf-border/Pest/Main/143017>



*Cordana johnstonii* MB Ellis  
(Ascomycota: Pezizomycotina)  
Reliability: High  
Status: 2 NZ - Regulated pest

**Cordana musae:** Live link: <http://www.padil.gov.au:80/maf-border/Pest/Main/143018>



*Cordana musae* (Zimm.) Höhnelt  
(Ascomycota: Pezizomycotina)  
Reliability: High  
Status: 2 NZ - Regulated pest

**Didymella bryoniae:** Live link: <http://www.padil.gov.au:80/maf-border/Pest/Main/143022>



*Didymella bryoniae* (Fuckel) Rehm  
(Ascomycota: Dothideomycetes:  
Capnodiales: Mycosphaerellaceae)  
Reliability: High  
Status: 2 NZ - Regulated pest

**Gopiana australis:** Live link: <http://www.padil.gov.au:80/maf-border/Pest/Main/143026>



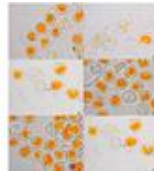
No Image Available

No Image Available



*Goplana australis* Y. Ono & J.F. Hennen  
(Basidiomycota: Pucciniomycetes:  
Pucciniales: Chaconiaceae)  
Reliability: High  
Status: 2 NZ - Regulated pest

**Goplana dioscoreae-alatae:** Live link: <http://www.padil.gov.au:80/maf-border/Pest/Main/143027>



*Goplana dioscoreae-alatae* J.R. Hern. & E.T. Cline  
(Basidiomycota: Pucciniomycetes:  
Pucciniales: Chaconiaceae)  
Reliability: High  
Status: 2 NZ - Regulated pest

**Guignardia dioscoreae:** Live link: <http://www.padil.gov.au:80/maf-border/Pest/Main/143029>



*Guignardia dioscoreae* A.K. Pande  
(Ascomycota: Dothideomycetes:  
Botryosphaerales: Botryosphaeriaceae)  
Reliability: High  
Status: 2 NZ - Regulated pest

**Guignardia mangiferae:** Live link: <http://www.padil.gov.au:80/maf-border/Pest/Main/143030>



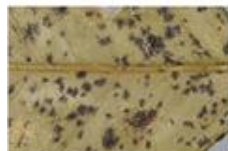
*Guignardia mangiferae* A.J. Roy  
(Ascomycota: Dothideomycetes:  
Botryosphaerales: Botryosphaeriaceae)  
Reliability: High  
Status: 2 NZ - Regulated pest

**Marasmiellus inoderma:** Live link: <http://www.padil.gov.au:80/maf-border/Pest/Main/143037>



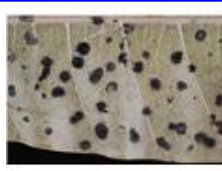
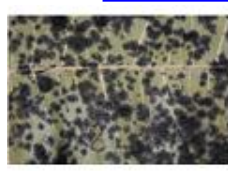
*Marasmiellus inoderma* (Berk.) Singer  
(Basidiomycota: Agaricomycetes:  
Agaricales: Marasmiaceae)  
Reliability: High  
Status: 2 NZ - Regulated pest

**Meliola citricola:** Live link: <http://www.padil.gov.au:80/maf-border/Pest/Main/143038>



*Meliola citricola* Syd. & P. Syd.  
(Ascomycota: Sordariomycetes:  
Meliolales: Meliolaceae)  
Reliability: High  
Status: 2 NZ - Regulated pest

**Meliola mangiferae:** Live link: <http://www.padil.gov.au:80/maf-border/Pest/Main/143039>



*Meliola mangiferae* Earle  
(Ascomycota: Sordariomycetes:  
Meliolales: Meliolaceae)  
Reliability: High  
Status: 2 NZ - Regulated pest

**Metulocladosporiella musae:** Live link: <http://www.padil.gov.au:80/maf-border/Pest/Main/143040>



*Metulocladosporiella musae* (E.W. Mason)  
Crous, Schroers, Groenewald, U. Braun &  
K. Schub.  
(Ascomycota: Chaetothyriomycetes:  
Chaetothyriales: Herpotrichiellaceae)  
Reliability: High  
Status: 2 NZ - Regulated pest

**Mycoleptodiscus indicus:** Live link: <http://www.padil.gov.au:80/maf-border/Pest/Main/143041>



*Mycoleptodiscus indicus* (V.P. Sahni) B.  
Sutton  
(Ascomycota: Sordariomycetes:  
Magnaporthaceae)  
Reliability: High  
Status: 2 NZ - Regulated pest

**Mycosphaerella alocasiae:** Live link: <http://www.padil.gov.au:80/maf-border/Pest/Main/143042>



*Mycosphaerella alocasiae* Syd. & P. Syd.  
(Ascomycota: Dothideomycetes:  
Capnodiales: Mycosphaerellaceae)  
Reliability: High  
Status: 2 NZ - Regulated pest

**Neojohnstonia colocasiae:** Live link: <http://www.padil.gov.au:80/maf-border/Pest/Main/143046>



*Neojohnstonia colocasiae* (M.B. Ellis) B.  
Sutton  
(Ascomycota: Pezizomycetes)  
Reliability: High  
Status: 2 NZ - Regulated pest

**Pestalotiopsis theae:** Live link: <http://www.padil.gov.au:80/maf-border/Pest/Main/143055>



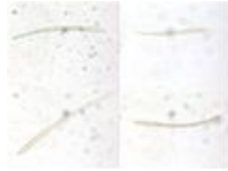
*Pestalotiopsis theae* (Sawada) Steyaert  
(Ascomycota: Sordariomycetes:  
Xylariales: Amphispheariaceae)  
Reliability: High  
Status: 2 NZ - Regulated pest

**Pseudocercospora abelmoschi :** Live link: <http://www.padil.gov.au:80/maf-border/Pest/Main/143057>



*Pseudocercospora abelmoschi* (Ellis &  
Everh.) Deighton  
(Ascomycota: Dothideomycetes:  
Capnodiales: Mycosphaerellaceae)  
Reliability: High  
Status: 2 NZ - Regulated pest

**Pseudocercospora artocarpi:** Live link: <http://www.padil.gov.au:80/maf-border/Pest/Main/143058>



No Image Available



*Pseudocercospora artocarpi* (Syd. & P. Syd.) Deighton  
(Ascomycota: Dothideomycetes:  
Capnodiales: Mycosphaerellaceae)  
Reliability: High  
Status: 2 NZ - Regulated pest

**Pseudocercospora colocasiae:** Live link: <http://www.padil.gov.au:80/maf-border/Pest/Main/143060>



*Pseudocercospora colocasiae* Deighton  
(Ascomycota: Dothideomycetes:  
Capnodiales: Mycosphaerellaceae)  
Reliability: High  
Status: 2 NZ - Regulated pest

**Pseudocercospora cruenta:** Live link: <http://www.padil.gov.au:80/maf-border/Pest/Main/143061>



*Pseudocercospora cruenta* (Sacc.)  
Deighton  
(Ascomycota: Dothideomycetes:  
Capnodiales: Mycosphaerellaceae)  
Reliability: High  
Status: 2 NZ - Regulated pest

**Pseudocercospora egenula:** Live link: <http://www.padil.gov.au:80/maf-border/Pest/Main/143063>



*Pseudocercospora egenula* (Syd.) U. Braun  
& Crous  
(Ascomycota: Dothideomycetes:  
Capnodiales: Mycosphaerellaceae)  
Reliability: High  
Status: 2 NZ - Regulated pest

**Pseudocercospora fuligena:** Live link: <http://www.padil.gov.au:80/maf-border/Pest/Main/143064>



*Pseudocercospora fuligena* (Roldan)  
Deighton  
(Ascomycota: Dothideomycetes:  
Capnodiales: Mycosphaerellaceae)  
Reliability: High  
Status: 2 NZ - Regulated pest

**Pseudocercospora timorensis:** Live link: <http://www.padil.gov.au:80/maf-border/Pest/Main/143066>



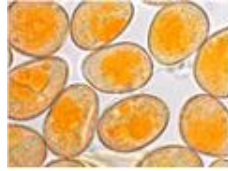
*Pseudocercospora timorensis* (Cooke)  
Deighton  
(Ascomycota: Dothideomycetes:  
Capnodiales: Mycosphaerellaceae)  
Reliability: High  
Status: 2 NZ - Regulated pest

**Pseudoperonospora cubensis:** Live link: <http://www.padil.gov.au:80/maf-border/Pest/Main/143083>



*Pseudoperonospora cubensis* (Berk. & M.A. Curtis) Rostovzev  
(Oomycota: Oomycetes: Peronosporales: Peronosporaceae)  
Reliability: High  
Status: 2 NZ - Regulated pest

**Puccinia polysora:** Live link: <http://www.padil.gov.au:80/maf-border/Pest/Main/143070>



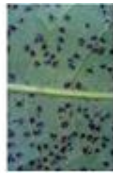
*Puccinia polysora* Underw.  
(Basidiomycota: Pucciniomycetes: Pucciniales: Pucciniaceae)  
Reliability: High  
Status: 2 NZ - Regulated pest

**Puccinia thaliae:** Live link: <http://www.padil.gov.au:80/maf-border/Pest/Main/143072>



*Puccinia thaliae* Dietel  
(Basidiomycota: Pucciniomycetes: Pucciniales: Pucciniaceae)  
Reliability: High  
Status: 2 NZ - Regulated pest

**Scolecostigmina mangiferae:** Live link: <http://www.padil.gov.au:80/maf-border/Pest/Main/143076>



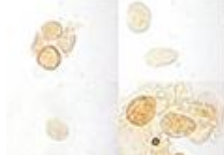
*Scolecostigmina mangiferae* (Koord.) U. Braun & Mouch.  
(Ascomycota: Dothideomycetes)  
Reliability: High  
Status: 2 NZ - Regulated pest

**Uredo artocarp:** Live link: <http://www.padil.gov.au:80/maf-border/Pest/Main/143079>



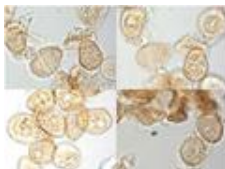
*Uredo artocarp* Berk. & Broome  
(Basidiomycota: Pucciniomycetes: Pucciniales)  
Reliability: High  
Status: 2 NZ - Regulated pest

**Uredo dioscoreae-sativae:** Live link: <http://www.padil.gov.au:80/maf-border/Pest/Main/143080>



*Uredo dioscoreae-sativae* Syd. & P. Syd.  
(Basidiomycota: Pucciniomycetes: Pucciniales)  
Reliability: High  
Status: 2 NZ - Regulated pest

**Uredo musae:** Live link: <http://www.padil.gov.au:80/maf-border/Pest/Main/143081>



No Image Available



*Uredo musae* Cummins  
(Basidiomycota: Pucciniomycetes: Pucciniales)  
Reliability: High  
Status: 2 NZ - Regulated pest

## Results Generated:

Thursday, November 21, 2019

## Click for live results:

<http://www.padil.gov.au:80/maf->

[border/Search?queryText1=&queryType1=All&sortType=CommonName&viewType=Details&pageSize=all&page=1&facetItems=9218](http://www.padil.gov.au:80/maf-border/Search?queryText1=&queryType1=All&sortType=CommonName&viewType=Details&pageSize=all&page=1&facetItems=9218)

## Image Library Sponsors:



Manaaki Whenua  
Landcare Research

Landcare Research — Manaaki Whenua



MPI (Ministry for Primary Industries)

