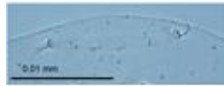
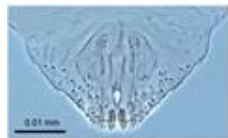


## Image Library: New Zealand Biosecurity

Live link: <http://www.padil.gov.au:80/maf-border/>

1 Species returned from Query: Host Family : Aquifoliaceae, Host Family : Bromeliaceae, Host Family : Burseraceae, Host Family : Lythraceae, Host Family : Sapindaceae

**False Parlatoria Scale:** Live link: <http://www.padil.gov.au:80/maf-border/Pest/Main/141294>



*Pseudoparlatoria parlatorioides*  
(Comstock, 1883)  
(Hemiptera: Diaspididae)  
Reliability: High  
Status: 0 Unknown

## Results Generated:

Sunday, April 5, 2020

## Click for live results:

<http://www.padil.gov.au:80/maf-border/Search?queryText1=&queryType1=All&sortType=CommonName&viewType=Details&pageSize=all&page=1&facetItems=9246+9261+9260+9356+9313>

## Image Library Sponsors:



Landcare Research — Manaaki Whenua



MPI (Ministry for Primary Industries)