

## Image Library: New Zealand Biosecurity

Live link: <http://www.padil.gov.au:80/maf-border/>

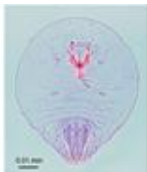
2 Species returned from Query: Host Family : Aspleniaceae, Host Family :  
Caryophyllaceae

**Green Shield Scale:** Live link: <http://www.padil.gov.au:80/maf-border/Pest/Main/141312>



*Pulvinaria psidii* Maskell, 1893  
(Hemiptera: Coccidae: Coccinae:  
Pulvinariini)  
Reliability: High  
Status: 0 Unknown

**Oleander Scale:** Live link: <http://www.padil.gov.au:80/maf-border/Pest/Main/141280>



*Aspidiotus nerii* Bouché, 1833  
(Hemiptera: Diaspididae)  
Reliability: High  
Status: 0 Unknown

## Results Generated:

Sunday, April 21, 2019

## Click for live results:

<http://www.padil.gov.au:80/maf-border/Search?queryText1=&queryType1=All&sortType=CommonName&viewType=Details&pageSize=all&page=1&facetItems=9270+9252>

## Image Library Sponsors:



Landcare Research — Manaaki Whenua



MPI (Ministry for Primary Industries)