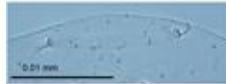
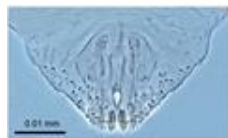


Image Library: New Zealand Biosecurity

Live link: <http://www.padil.gov.au:80/maf-border/>

1 Species returned from Query: Host Family : Combretaceae, Host Family : Labiatae,
Host Family : Rubiaceae, Host Family : Smilacaceae

False Parlatoria Scale: Live link: <http://www.padil.gov.au:80/maf-border/Pest/Main/141294>



Pseudoparlatoria parlatorioides
(Comstock, 1883)
(Hemiptera: Diaspididae)
Reliability: High
Status: 0 Unknown

Results Generated:

Wednesday, February 26, 2020

Click for live results:

<http://www.padil.gov.au:80/maf-border/Search?queryText1=&queryType1=All&sortType=CommonName&viewType=Details&pageSize=all&page=1&facetItems=9352+9398+9361+9277>

Image Library Sponsors:



Landcare Research — Manaaki Whenua



MPI (Ministry for Primary Industries)