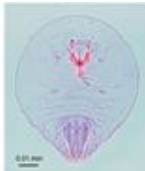


## Image Library: New Zealand Biosecurity

Live link: <http://www.padil.gov.au:80/maf-border/>

1 Species returned from Query: Host Family : Ephedraceae, Host Family : Ruscaceae,  
Host Family : Taxaceae

**Oleander Scale:** Live link: <http://www.padil.gov.au:80/maf-border/Pest/Main/141280>



*Aspidiotus nerii* Bouché, 1833

(Hemiptera: Diaspididae)

Reliability: High

Status: 0 Unknown

## Results Generated:

Sunday, January 26, 2020

## Click for live results:

<http://www.padil.gov.au:80/maf->

[border/Search?queryText1=&queryType1=All&sortType=CommonName&viewType=Details&pageSize=all&page=1&facetItems=9421+9291+9365](http://www.padil.gov.au:80/maf-border/Search?queryText1=&queryType1=All&sortType=CommonName&viewType=Details&pageSize=all&page=1&facetItems=9421+9291+9365)

## Image Library Sponsors:



Landcare Research — Manaaki Whenua



MPI (Ministry for Primary Industries)

---