

## Image Library: Seed Library

Live link: <http://www.padil.gov.au:80/seeds/>

22 Species returned from Query: Seed shape : Ovoid, Fruit shape : Not applicable

**Asparagus:** Live link: <http://www.padil.gov.au:80/seeds/Pest/Main/142693>



*Asparagus officinalis* Linnaeus, C (1753)  
(Magnoliophyta: Liliopsida: Liliales:  
Liliaceae)

Reliability: High

Status: High

**Bird's-foot trefoil :** Live link: <http://www.padil.gov.au:80/seeds/Pest/Main/142202>



*Lotus corniculatus* Linnaeus, C (1753)  
(Magnoliophyta: Magnoliopsida: Fabales:  
Fabaceae)

Reliability: High

Status: Medium

**Borlotti bean:** Live link: <http://www.padil.gov.au:80/seeds/Pest/Main/142718>



*Phaseolus vulgaris - borlotti* Linnaeus, C  
(1753)

(Magnoliophyta: Magnoliopsida: Fabales:  
Fabaceae)

Reliability: High

Status: High

**Cabbage:** Live link: <http://www.padil.gov.au:80/seeds/Pest/Main/142515>



*Brassica sp. --*

(Magnoliophyta: Magnoliopsida:  
Capparales: Brassicaceae)

Reliability: High

Status: Medium

**Canola:** Live link: <http://www.padil.gov.au:80/seeds/Pest/Main/141657>



*Brassica napus* Linnaeus, 1753

(Magnoliophyta: Magnoliopsida:  
Capparales: Brassicaceae)

Reliability: High

Status: High

**Cauliflower** : Live link: <http://www.padil.gov.au:80/seeds/Pest/Main/142518>



*Brassica oleracea* var. *botrytis* Linnaeus, C (1753)  
(Magnoliophyta: Magnoliopsida:  
Capparales: Brassicaceae)  
Reliability: High  
Status: High

**Chinese mustard** : Live link: <http://www.padil.gov.au:80/seeds/Pest/Main/142516>



*Brassica* sp. --  
(Magnoliophyta: Magnoliopsida:  
Capparales: Brassicaceae)  
Reliability: High  
Status: Medium

**Chou mouiller** : Live link: <http://www.padil.gov.au:80/seeds/Pest/Main/142519>



*Brassica* sp. --  
(Magnoliophyta: Magnoliopsida:  
Capparales: Brassicaceae)  
Reliability: High  
Status: High

**Crimson clover** : Live link: <http://www.padil.gov.au:80/seeds/Pest/Main/142159>



*Trifolium incarnatum* Linnaeus, C (1753)  
(Magnoliophyta: Magnoliopsida: Fabales:  
Fabaceae)  
Reliability: High  
Status: High

**Fumitory** : Live link: <http://www.padil.gov.au:80/seeds/Pest/Main/142408>



*Fumaria* sp. --  
(Magnoliophyta: Magnoliopsida:  
Papaverales: Fumariaceae)  
Reliability: High  
Status: High

**Hare's ear** : Live link: <http://www.padil.gov.au:80/seeds/Pest/Main/142700>



*Conringia orientalis* (L.) C.Presl, (1826)  
(Magnoliophyta: Magnoliopsida:  
Capparales: Brassicaceae)  
Reliability: High  
Status: High

**Mustard** : Live link: <http://www.padil.gov.au:80/seeds/Pest/Main/142322>



*Sinapis alba* Linnaeus, C (1753)  
(Magnoliophyta: Magnoliopsida:  
Capparales: Brassicaceae )  
Reliability: High  
Status: High

**Narrow-leaved Lupin:** Live link: <http://www.padil.gov.au:80/seeds/Pest/Main/141790>



*Lupinus angustifolius* Linnaeus, 1753  
(Magnoliophyta: Magnoliopsida: Fabales:  
Fabaceae)  
Reliability: High  
Status: High

**Purple top turnip seed :** Live link: <http://www.padil.gov.au:80/seeds/Pest/Main/142454>



*Brassica sp.* --  
(Magnoliophyta: Magnoliopsida:  
Capparales: Brassicaceae)  
Reliability: High  
Status: Medium

**Rose Clover Lisare :** Live link: <http://www.padil.gov.au:80/seeds/Pest/Main/142372>



*Trifolium hirtum* Allioni, C. (1789)  
(Magnoliophyta: Magnoliopsida: Fabales:  
Fabaceae)  
Reliability: High  
Status: High

**Seaton park sub clover :** Live link: <http://www.padil.gov.au:80/seeds/Pest/Main/142550>



*Trifolium subterraneum* var. *seaton park*  
Linnaeus, C (1753)  
(Magnoliophyta: Magnoliopsida: Fabales:  
Fabaceae)  
Reliability: High  
Status: High

**Shaftal clover :** Live link: <http://www.padil.gov.au:80/seeds/Pest/Main/142502>



*Trifolium resupinatum* Linnaeus, C (1753)  
(Magnoliophyta: Magnoliopsida: Fabales:  
Fabaceae)  
Reliability: High  
Status: Medium

**Sudax:** Live link: <http://www.padil.gov.au:80/seeds/Pest/Main/142136>



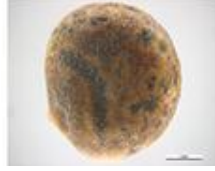
*Sorghum sp* --  
(Magnoliophyta: Liliopsida: Cyperales:  
Poaceae)  
Reliability: High  
Status: High

**Vetch:** Live link: <http://www.padil.gov.au:80/seeds/Pest/Main/141758>



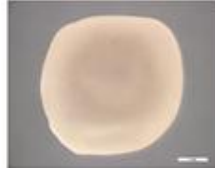
*Vicia sativa* Linnaeus, C (1753)  
 (Magnoliophyta: Magnoliopsida: Fabales:  
 Fabaceae)  
 Reliability: High  
 Status: High

**West Australian blue lupin:** Live link: <http://www.padil.gov.au:80/seeds/Pest/Main/141791>



*Lupinus cosentini* Gussone, G. (1828)  
 (Magnoliophyta: Magnoliopsida: Fabales:  
 Fabaceae)  
 Reliability: High  
 Status: High

**White Lupin:** Live link: <http://www.padil.gov.au:80/seeds/Pest/Main/142006>



*Lupinus albus* Linnaeus, C (1753)  
 (Magnoliophyta: Magnoliopsida: Fabales:  
 Fabaceae)  
 Reliability: High  
 Status: High

**Yarloop sub clover :** Live link: <http://www.padil.gov.au:80/seeds/Pest/Main/142551>



*Trifolium subterraneum* var. *yarloop*  
 Linnaeus, C (1753)  
 (Magnoliophyta: Magnoliopsida: Fabales:  
 Fabaceae)  
 Reliability: High  
 Status: High

## Results Generated:

Saturday, February 22, 2020

## Click for live results:

<http://www.padil.gov.au:80/seeds/Search?queryText1=&queryType1=All&sortType=CommonName&viewType=Details&pageSize=all&page=1&facetItems=9592+9475>

## Image Library Sponsors:



Museum Victoria



DAFF