

# 1. PaDIL Species Factsheet



---

## Scientific Name:

*Crotalaria intermedia* Benth.

(Magnoliophyta: Magnoliopsida: Fabales: Fabaceae)

## Common Name

Slender leaf crotalaria

Live link: <http://www.padil.gov.au:80/seeds/Pest/Main/142166>

## Image Library

Seed Library

Live link: <http://www.padil.gov.au:80/seeds/>

## Partners for Seed Library image library



Museum Victoria

<http://museumvictoria.com.au/>



DAFF

<http://www.daff.gov.au/>

## 2. Species Information

### 2.1. Details

**Specimen Contact:** AQIS -

**Author:** Clare McLellan

**Citation:** Clare McLellan (2011) Slender leaf crotalaria (*Crotalaria intermedia*) Updated on 10/8/2012 Available online: PaDIL - <http://www.padil.gov.au>

**Image Use:** Free for use under the Creative Commons Attribution 3.0 Australia licence

### 2.2. URL

Live link: <http://www.padil.gov.au:80/seeds/Pest/Main/142166>

### 2.3. Facets

**Fruit appendages:** Not applicable

**Fruit colour:** Not applicable

**Fruit length:** Not applicable

**Fruit shape:** Not applicable

**Reliability:** High

**Seed colour:** Variable - red/yellow, Variable - yellow/orange

**Seed length:** 2.1-4mm

**Seed sculpture:** Smooth

**Seed shape:** Reniform

### 2.4. Other Names

*Crotalaria brevidens* var. *intermedia* (Benth)

*Ethiopian rattlebox*

### 2.5. Diagnostic Notes

Pictured: Seed(s)

Description

Seed Colour: Variable - red/yellow, Variable - yellow/orange

Seed Length: 2 - 4mm

Seed Sculpture: Smooth

Seed Shape: Reniform (Kidney shaped)

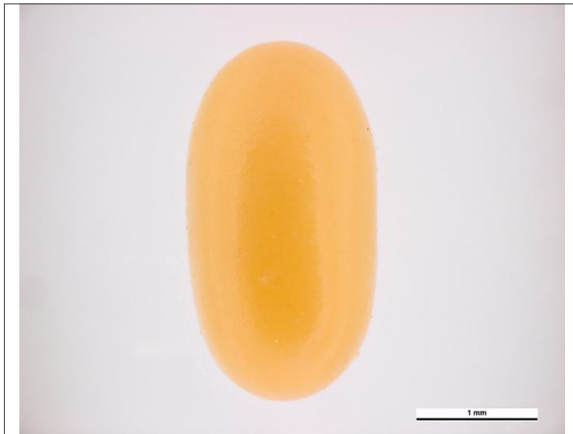
### 3. Diagnostic Images



Australian \$2 Coin with seeds  
**Coin compare:** Clare McLellan Museum  
Victoria



Seed Project  
**Group Image:** Clare McLellan Museum  
Victoria



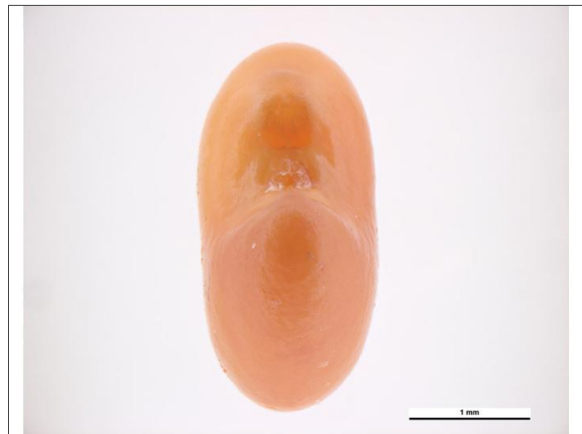
Seed Project  
**Seed Dorsal:** Clare McLellan Museum  
Victoria



Seed Project  
**Seed Hilum:** Clare McLellan Museum  
Victoria



Seed Project  
**Seed Lateral:** Clare McLellan Museum  
Victoria



Seed Project  
**Seed Ventral:** Clare McLellan Museum  
Victoria

Results Generated:

Saturday, December 7, 2019