

1. PaDIL Species Factsheet



Scientific Name:

Oryza sativa - short grain Linnaeus, C (1753)
(Magnoliophyta: Liliopsida: Cyperales: Poaceae)

Common Name

Short grain paddy rice

Live link: <http://www.padil.gov.au:80/seeds/Pest/Main/142594>

Image Library

Seed Library

Live link: <http://www.padil.gov.au:80/seeds/>

Partners for Seed Library image library



Museum Victoria

<http://museumvictoria.com.au/>



DAFF

<http://www.daff.gov.au/>

2. Species Information

2.1. Details

Specimen Contact: AQIS -

Author: Clare McLellan

Citation: Clare McLellan (2012) Short grain paddy rice (*Oryza sativa* - short grain) Updated on 1/16/2013

Available online: PaDIL - <http://www.padil.gov.au>

Image Use: Free for use under the Creative Commons Attribution 3.0 Australia licence

2.2. URL

Live link: <http://www.padil.gov.au:80/seeds/Pest/Main/142594>

2.3. Facets

Fruit appendages: Awn, Colliculate, Hairs or bristles

Fruit colour: Orange, Yellow

Fruit length: 5-7mm, Great than 7mm

Fruit shape: Lanceolate, Oblong

Reliability: High

Seed colour: Ivory

Seed length: 2.1-4mm

Seed sculpture: Roughened, Smooth

Seed shape: Oblong

2.4. Diagnostic Notes

****Pictured:**** Floret and caryopsis

****Description****

Floret Appendages: Awn, Colliculate with hairs and bristles

Floret Colour: Orange

Floret Length: 7 - 10mm

Floret Shape: Lancolate

Seed Colour: Ivory

Seed Length: 2 - 4mm

Seed Sculpture: Roughened

Seed Shape: Oblong

Floret - Rice (Paddy is a term for rice in it's natural harvested state)

Caryopsis - rice (processed - 'polished')

Basal sterile florets similar; barren; without significant palea. Lemma of lower sterile floret lanceolate; 2–3 mm long; 0.25(–0.5) length of spikelet; membranous; without lateral veins; emarginate. Lemma of upper sterile

floret lanceolate; 2–3 mm long; 1 length of lower sterile floret; membranous. Fertile lemma elliptic; laterally compressed; 8–11 mm long; coriaceous; keeled; 5 -veined. Lemma midvein ciliate; hairy above. Lemma surface reticulate; glabrous, or hispid. Lemma margins involute. Lemma apex rostrate; muticous, or awned; 1 -awned. Principal lemma awn 0–160 mm long overall; limb scabrous. Palea elliptic; 1 length of lemma; coriaceous; 3 -veined; 1-keeled. Palea keels scabrous. Palea apex acute.

Caryopsis with adherent pericarp. Disseminule comprising a floret.

Source: See Weblinks KEW Royal Botanic Gardens

3. Diagnostic Images



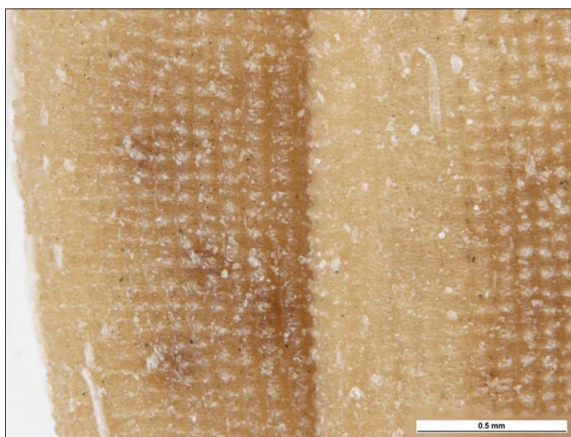
Australian \$2 Coin with seeds
Coin compare: Clare McLellan Museum
Victoria



Seed Project
Floret Dorsal: Clare McLellan Museum
Victoria



Seed Project
Floret Lateral: Clare McLellan Museum
Victoria



Seed Project
Floret Surface Detail: Clare McLellan
Museum Victoria



Seed Project
Floret Ventral: Clare McLellan Museum
Victoria



Seed Project
Floret with awn: Clare McLellan Museum
Victoria



Seed Project
Group Image: Clare McLellan Museum
Victoria



Seed Project
Seed Dorsal: Clare McLellan Museum
Victoria



Seed Project
Seed Lateral : Clare McLellan Museum
Victoria



Seed Project
Seed Ventral: Clare McLellan Museum
Victoria

4. Other Images



Australian \$2 Coin with florets
Coin compare: Clare McLellan Museum
Victoria



Seed Project
Florets and Seed: Clare McLellan Museum
Victoria

Results Generated:

Saturday, December 14, 2019
