

1. PaDIL Species Factsheet



Scientific Name:

Camponotus evae zeuxis Forel

(Hymenoptera: Formicidae: Formicinae)

Common Name

Sugar ant - *Camponotus evae zeuxis*

Live link: <http://www.padil.gov.au/barrow-island/Pest/Main/136733>

Image Library

Barrow Island QIM

Live link: <http://www.padil.gov.au/barrow-island/>

Partners for Barrow Island QIM image library



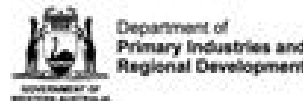
Chevron - Gorgon

<http://www.chevronaustralia.com/ourbusinesses/gorgon.aspx>



Museums Victoria

<https://museumsvictoria.com.au/>



Department of Primary Industries and Regional Development

<https://dpird.wa.gov.au/>

2. Species Information

2.1. Details

Specimen Contact: -

Author: Gibson, L.

Citation: Gibson, L. (2008) Sugar ant - *Camponotus evae zeuxis* (*Camponotus evae zeuxis*) Updated on 2/27/2013 Available online: PaDIL - <http://www.padil.gov.au>

Image Use: Free for use under the Creative Commons Attribution-NonCommercial 4.0 International (CC BY-NC 4.0)

2.2. URL

Live link: <http://www.padil.gov.au/barrow-island/Pest/Main/136733>

2.3. Facets

Exotic Status: Native to Barrow Island

Group: Ants

Region: CTC

Antennae: Basal attachments not obscured

Gaster shape: Second segment not strongly arched

Head shape: Not long or parallel sided

Petiole: A single, distinct segment

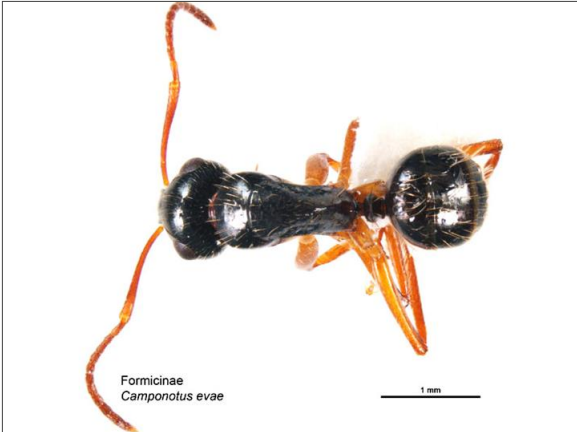
Sting: Absent

Feeding strategies: Predators, Scavengers, Omnivores, Herbivores

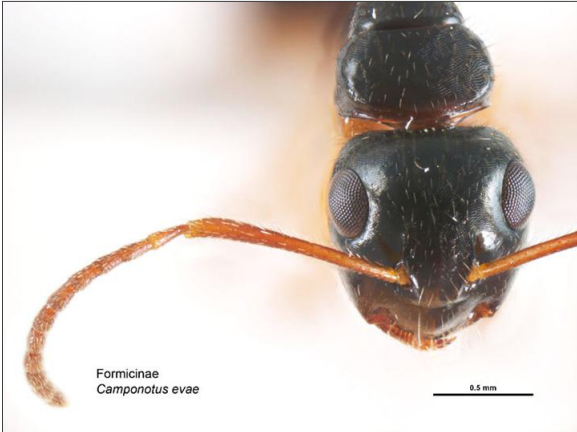
Foraging times: Seen during the day, Seen during the night

Nest locations: Below ground, Arboreal, Nest entrance sheltered

3. Diagnostic Images



Western Australia: Barrow Island
Dorsal Image: Lucinda Gibson Museums Victoria



Western Australia: Barrow Island
Head front Image: Lucinda Gibson Museums Victoria



Western Australia: Barrow Island
Head side Image: Lucinda Gibson Museums Victoria



Western Australia: Barrow Island
Lateral image: Lucinda Gibson Museums Victoria

Results Generated:

Friday, July 30, 2021
