

1. PaDIL Species Factsheet



Scientific Name:

Howardia biclavis (Comstock, 1883)

(Hemiptera: Diaspididae)

Common Name

Mining Scale

Live link: <http://www.padil.gov.au/maf-border/Pest/Main/141279>

Image Library

New Zealand Biosecurity

Live link: <http://www.padil.gov.au/maf-border/>

Partners for New Zealand Biosecurity image library



Manaaki Whenua
Landcare Research

Landcare Research — Manaaki Whenua

<http://www.landcareresearch.co.nz/>

Biosecurity New Zealand

Tiakitanga Pūtaiao Aotearoa

MPI (Ministry for Primary Industries)

<http://www.biosecurity.govt.nz/>

2. Species Information

2.1. Details

Specimen Contact: New Zealand Arthropod Collection - nzac@landcareresearch.co.nz

Author: Henderson, R. C. & Crosby, T. K.

Citation: Henderson, R. C. & Crosby, T. K. (2011) Mining Scale (*Howardia biclavis*) Updated on 7/8/2011

Available online: PaDIL - <http://www.padil.gov.au>

Image Use: Free for use under the Creative Commons Attribution-NonCommercial 4.0 International (CC BY-NC 4.0)

2.2. URL

Live link: <http://www.padil.gov.au/maf-border/Pest/Main/141279>

2.3. Facets

Commodity Overview: Horticulture

Commodity Type: 1 Other, Avocado & Cinnamon, Citrus produce, Coffee beans & Kape, Fabaceous produce, Rosaceous produce, Sapindaceous produce

Groups: Bugs

Status: NZ - Exotic

Pest Status: 0 Unknown

Distribution: Afrotropic, Australasia, Indo-Malaya, Nearctic, Neotropic, Oceania, Palearctic

Host Family: Acanthaceae, Anacardiaceae, Annonaceae, Apocynaceae, Aquifoliaceae, Araceae, Araliaceae, Arecaceae, Asteraceae, Begoniaceae, Bignoniaceae, Bixaceae, Boraginaceae, Burseraceae, Capparaceae, Caprifoliaceae, Caricaceae, Caryophyllaceae, Casuarinaceae, Celastraceae, Chrysobalanaceae, Clusiaceae, Combretaceae, Convolvulaceae, Ebenaceae, Elaeocarpaceae, Euphorbiaceae, Fabaceae, Fagaceae, Flacourtiaceae, Guttiferae, Juglandaceae, Labiatae, Lauraceae, Lythraceae, Malpighiaceae, Malvaceae, Melastomataceae, Meliaceae, Moraceae, Moringaceae, Myristicaceae, Myrtaceae, Nyctaginaceae, Ochnaceae, Oleaceae, Onagraceae, Passifloraceae, Phytolaccaceae, Piperaceae, Pittosporaceae, Polygonaceae, Proteaceae, Punicaceae, Rosaceae, Rubiaceae, Rutaceae, Salicaceae, Sapindaceae, Sapotaceae, Solanaceae, Theaceae, Tiliaceae, Ulmaceae, Verbenaceae, Vitaceae, Bombacaceae, Buddlejaceae, Calycanthaceae, Erythroxylaceae, Gesneriaceae, Myricaceae, Viscaceae, Vitidaceae, Ehretiaceae

2.4. Other Names

Burrowing scale

Chionaspis biclavis (Comstock, 1883) Maxwell-Lefroy, 1902

Chionaspis biclavis detecta Maskell, 1895

Chionaspis? biclavis Comstock, 1883

Howardia biclavis (Comstock, 1883) Berlese, Leonardi, 1896

Howardia biclavis (Comstock, 1883) Ramakrishna Ayyar, 1921

Howardia biclavis detecta (Comstock, 1883) Fernald, 1903

Megalodiaspis biclavis (Comstock, 1883) Paoli, 1915

2.5. Diagnostic Notes

Source: [ScaleNet](<http://scalenet.info>)

Female scale white, but obscured by tissue of host, nearly circular. Exuviae marginal and project beyond the edge of scale (Comstock, 1883).

Adult female large, broadly turbinate: head, thorax, and anterior abdominal segments heavily sclerotised, pygidium broadly rounded. Important diagnostic characters are the large prominent median lobes set close together, outer margins longer than inner margins, serrate and slanting; each lobe with a prominent clavate sclerosis arising from inner corner. 2nd lobes each reduced to a small conical process. Gland spines present between median lobes short; long gland spines present in segmental groupings of 4 or 5 forward to abdominal segment 5. Dorsal ducts numerous on margins of pygidium and present in submarginal and submedian groups. Perivulvar pores absent.

****Keys****

Miller & Davidson (2005). Suh & Ji 2009: 1041-1043 (female) [Key to species of armored scales intercepted on imported plants (slide mounted females)]; Wolff & Corseuil 1993a: 153 (female) [Diaspidid species on mango in Brazil]; Williams & Watson 1988: 137 [Key to species of *Howardia*]; Fullaway 1932: 96 (female) [Key to species of Hawaiian Diaspinae]; Comstock 1916: 559 (female) [as *Chionaspis biclavis*]; Key to species of *Chionaspis*; Green 1899a: 108 (female) [as *Chionaspis biclavis*; Synopsis of *Chionaspis* species]; Comstock 1881a: 98 [as *Chionaspis biclavis*; Key to species of *Chionaspis*].

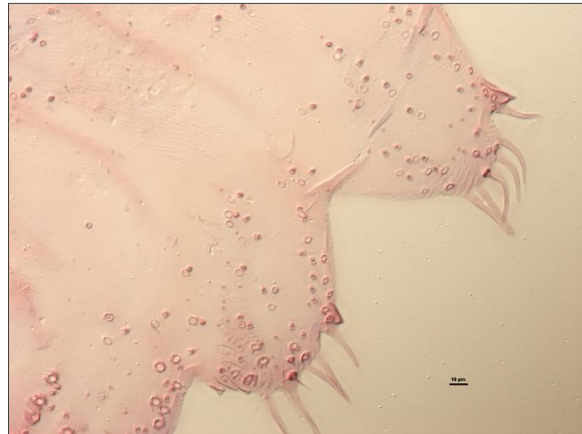
2.6. Web Links

Scale Net: <http://scalenet.info/validname/Howardia/biclavis/>

3. Diagnostic Images



Slide mounted
Full body - Female: Rosa Henderson
Landcare Research



Slide mounted
Lateral abdomen - Female: Rosa Henderson
Landcare Research



Slide mounted
Mouth and Spiracle - Female: Rosa
Henderson Landcare Research



Slide mounted
Pygidium - Female: Rosa Henderson
Landcare Research

Results Generated:

Wednesday, August 10, 2022

