

1. PaDIL Species Factsheet



Scientific Name:

Diaspis boisduvalii Signoret, 1869
(Hemiptera: Diaspididae)

Common Name

Boisduval Scale

Live link: <http://www.padil.gov.au/maf-border/Pest/Main/141282>

Image Library

New Zealand Biosecurity

Live link: <http://www.padil.gov.au/maf-border/>

Partners for New Zealand Biosecurity image library



Manaaki Whenua
Landcare Research

Landcare Research — Manaaki Whenua

<http://www.landcareresearch.co.nz/>

Biosecurity New Zealand

Tiakitanga Pūtaiao Aotearoa

MPI (Ministry for Primary Industries)

<http://www.biosecurity.govt.nz/>

2. Species Information

2.1. Details

Specimen Contact: New Zealand Arthropod Collection - nzac@landcareresearch.co.nz

Author: Henderson, R. C. & Crosby, T. K.

Citation: Henderson, R. C. & Crosby, T. K. (2011) Boisduval Scale (*Diaspis boisduvalii*) Updated on 3/23/2014

Available online: PaDIL - <http://www.padil.gov.au>

Image Use: Free for use under the Creative Commons Attribution-NonCommercial 4.0 International (CC BY-NC 4.0)

2.2. URL

Live link: <http://www.padil.gov.au/maf-border/Pest/Main/141282>

2.3. Facets

Commodity Overview: Horticulture

Commodity Type: Coffee beans & Kape, Rosaceous produce, 1 Other, Banana, Citrus produce, Coconut, Fabaceous produce, Figs & Breadfruit, Grapes, Mango, Pineapple

Groups: Bugs

Status: NZ - Exotic

Pest Status: 0 Unknown

Distribution: Afrotropic, Australasia, Indo-Malaya, Nearctic, Neotropic, Oceania, Palearctic

Host Family: Agavaceae, Amaranthaceae, Anacardiaceae, Araliaceae, Arecaceae, Asteraceae, Bromeliaceae, Cactaceae, Celastraceae, Crassulaceae, Cyperaceae, Euphorbiaceae, Fabaceae, Flacourtiaceae, Guttiferae, Heliconiaceae, Lauraceae, Liliaceae, Loranthaceae, Meliaceae, Moraceae, Musaceae, Myricaceae, Orchidaceae, Pandanaceae, Rosaceae, Rubiaceae, Ruscaceae, Rutaceae, Santalaceae, Sapotaceae, Strelitziaceae, Thymelaeaceae, Vitaceae, Marantaceae, Melastomaceae, Potialiaceae, Symplocaceae

2.4. Other Names

Aulacaspis boisduvalii (Signoret, 1869) Cockerell, 1893

Aulacaspis cattleyae Cockerell, 1899

Aulacaspis cymbidii (McIntire, 1889) Fernald, 1903

Cocoa-nut Snow Scale

Cocos Scale

Diaspis boisduvalii (Signoret, 1869) Borchsenius, 1966

Diaspis bromeliae Bodenheimer, 1949

Diaspis cattleyae (Cockerell, 1899) Cockerell, 1902

Diaspis cymbidii McIntire, 1889

Diaspis trinacis Colvée, 1881

2.5. Diagnostic Notes

Source: Henderson (2011) [See Web Links tab]

Live Appearance and Habitat

Female scale cover opaque, circular, flat, exuvia central; male scale cover elongate, carinate with pale terminal exuvium, and associated white woolly wax. Female body creamy with dark pygidium when young, pale yellow when mature, eggs yellow. On leaves of host plants.

****Diagnosis****

Adult female body turbinate, prosoma with an ear-like lobe each side (occasionally lacking in some specimens); apex of pygidium with deep notch formed by recessed median lobes; each lobe diverging, serrate, the inner margins longer than outer margins. L2 and L3 rounded, bilobate, the lobules of each about same size, unilobate L4 present. With a pair of setae in medial space. Gland spines present singly lateral to L1 between lobes and more numerous on prepygidial abdominal margins to segment II. Marginal macroducts 2-barred, 6 pairs plus 1 macroduct between median lobes, and 2 pairs of macroducts submarginally by L2 and L3. With a lateral spur on margin at position of each 6th macroduct.

Dorsal ducts becoming smaller anteriorly. Anal opening small, positioned in posterior 1/3 of pygidium. Antenna with 1 seta. Anterior spiracles each with a small group of trilocular pores, absent from posterior spiracles. Perivulvar pores present in 5 compact lozenge-shaped groups.

****Source:** [ScaleNet](http://scalenet.info)**

****Keys****

Miller & Davidson (2005). Suh & Ji 2009: 1041-1043 (female) [Key to species of armored scales intercepted on imported plants (slide mounted females)]; Colón-Ferrer & Medina-Gaud 1998: 91 [Key to species of *_Diaspis_* of Puerto Rico]; Gill 1997: 125 (female) [Key to California species of *_Diaspis_*]; Wolff & Corseuil 1993a: 154 (female) [Diaspidid species on mango in Brazil]; Williams & Watson 1988: 100 (female) [Key to species of *_Diaspis_* in the tropical South Pacific Region]; Chou 1982: 118 (female) [Key to Chinese species of *_Diaspis_*]; Danzig 1971d: 845 (female) [Key to species of family Diaspididae]; Beardsley 1966: 531 (female) [Key to known Micronesian species of *_Diaspis_*]; Schmutterer 1959: 178 (female) [Bestimmungstabelle der deutschen Diaspis-Arten]; McKenzie 1956: 31 (female) [Key to the species of *_Diaspis_* Costa]; Balachowsky 1954e: 178 (female) [Tableau d'identification des espèces du *_Diaspis_* Costa]; Hall 1946a: 515 (female) [Key to species of *_Diaspis_*]; Ferris 1942: SIV-446:53 (female) [Key to species of *_Diaspis_*]; Archangelskaya 1937: 82 (female) [Key to species of *_Diaspis_*]; Fullaway 1932: 95 (female) [Key to species of Hawaiian Diaspinae]; MacGillivray 1921: 319 (female) [Key to species of *_Diaspis_*]; Newstead 1901b: 152 (female) [Key to species of *_Diaspis_*].

2.6. References

- Henderson, R. C. (2011). Diaspididae (Insecta: Hemiptera: Coccoidea). *_Fauna of New Zealand 66_*, 275 pp. [See Web Links tab] - Miller, D. R.; Davidson, J. A. (2005). *_Armored scale insect pests of trees and shrubs_*. Cornell University Press, N.Y. 442 pp. - Watson, G.W. (2002). *_Arthropods of Economic Importance: Diaspididae of the World_*. World Biodiversity Database, CD-ROM. Expert Center for Taxonomic Identification (ETI), University of Amsterdam, The Netherlands.

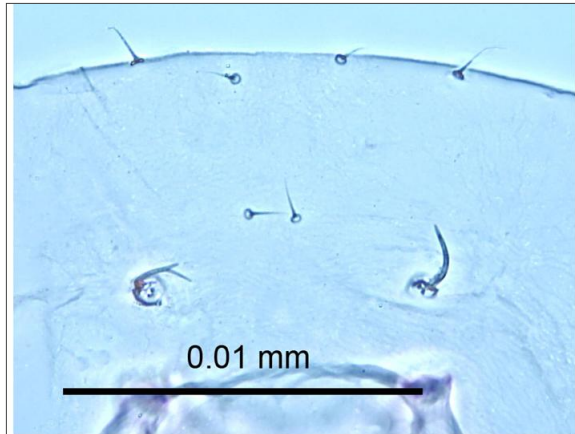
2.7. Web Links

Scale Net: <http://scalenet.info/validname/Diaspis/boisduvalii/>

Henderson, 2011:

<http://www.landcareresearch.co.nz/research/biosystematics/invertebrates/faunaofnz/Extracts/FNZ66/FNZ66ind.asp>

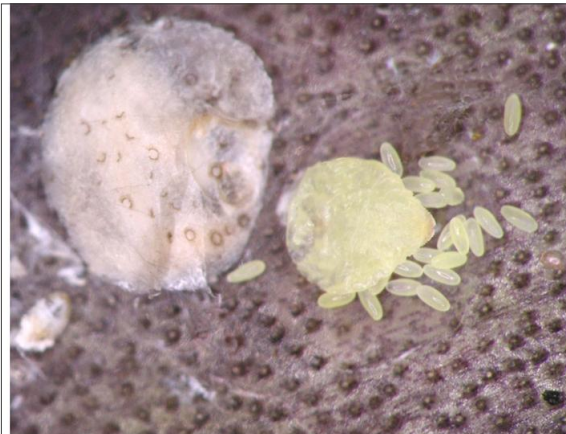
3. Diagnostic Images



Slide mounted
Antenna - Female: Rosa Henderson
Landcare Research



Slide mounted
Full body - Female: Rosa Henderson
Landcare Research

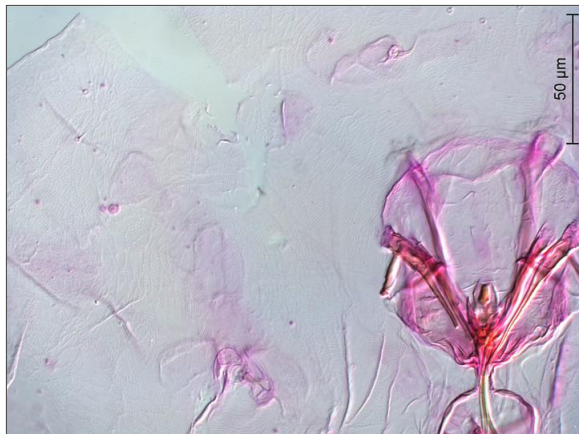


Adult female with eggs, scale cover
overturned
Full body and eggs - Female In life: Rosa
Henderson Landcare Research



NZA721. Magnification: 40x.
Pygidium - Ventral - Adult: Qing-Hai Fan
MAF

4. Other Images



NZA721. Magnification: 40x.
Antenna - Adult: Qing-Hai Fan MAF



NZA721. Magnification: 20x.
Dorsal - Adult: Qing-Hai Fan MAF



NZA721. Magnification: 10x.
Full Body: Qing-Hai Fan MAF



NZA721. Magnification: 40x.
Pygidium - Dorsal - Adult: Qing-Hai Fan MAF

Results Generated:

Wednesday, August 10, 2022

