

# 1. PaDIL Species Factsheet



---

## Scientific Name:

*Fusilaspis phymatodidis* (Maskell, 1880)

(Hemiptera: Diaspididae)

## Common Name

Fern Scale (New Zealand)

Live link: <http://www.padil.gov.au/maf-border/Pest/Main/141283>

## Image Library

New Zealand Biosecurity

Live link: <http://www.padil.gov.au/maf-border/>

## Partners for New Zealand Biosecurity image library



Manaaki Whenua  
Landcare Research

Landcare Research — Manaaki Whenua

<http://www.landcareresearch.co.nz/>

**Biosecurity New Zealand**

Tiakitanga Pūtaiao Aotearoa

MPI (Ministry for Primary Industries)

<http://www.biosecurity.govt.nz/>

## 2. Species Information

### 2.1. Details

**Specimen Contact:** New Zealand Arthropod Collection - [nzac@landcareresearch.co.nz](mailto:nzac@landcareresearch.co.nz)

**Author:** Henderson, R. C. & Crosby, T. K.

**Citation:** Henderson, R. C. & Crosby, T. K. (2011) Fern Scale (New Zealand) (*Fusilaspis phymatodidis*)

Updated on 3/31/2014 Available online: PaDIL - <http://www.padil.gov.au>

**Image Use:** Free for use under the Creative Commons Attribution-NonCommercial 4.0 International (CC BY-NC 4.0)

### 2.2. URL

Live link: <http://www.padil.gov.au/maf-border/Pest/Main/141283>

### 2.3. Facets

**Commodity Overview:** Horticulture

**Commodity Type:** 1 Other

**Groups:** Bugs

**Status:** NZ - Endemic

**Pest Status:** 0 Unknown

**Distribution:** Australasia

**Host Family:** Asclepiadaceae, Dicksoniaceae, Polygonaceae, Pteridaceae, Blechnaceae, Cyatheaceae, Dryopteridaceae, Gleicheniaceae, Grammitidaceae, Hymenophyllaceae, Marattiaceae, Oleandraceae, Schizaeaceae

### 2.4. Other Names

*Fusilaspis phymatodidis* (Maskell, 1880) MacGillivray, 1921

*Lepidosaphes phymatodidis* (Maskell, 1880) Fernald, 1903

*Mytilaspis phymatodidis* Maskell, 1880

*Pseudaulacaspis phymatodidis* (Maskell, 1880) Deitz, Tocker, 1980

*Trichomytilus phymatodidis* (Maskell, 1880) Lindinger, 1933

### 2.5. Diagnostic Notes

**\*\*Source:** Henderson (2011) [See Web Links tab]\*\*

**\*\*Live Appearance and Habitat\*\***

Female scale cover pyriform, white to creamy white, with golden brown terminal exuvia; when on underside of fronds of silver fern (*Cyathea dealbata*) the scale covers are more silver-grey and blend with the colour of the substrate; female body bright yellow, eggs pale yellow. Male scale covers are similar but smaller, not carinated. On underside of fronds of its fern host.

**\*\*Diagnosis\*\***

Adult female, measurements taken from 30 specimens. Body oval to fusiform, length 0.56–1.25 mm, width 0.34–0.67 mm, widest at about abdomen I, lateral abdominal lobes weakly developed; pygidium shape oval,

median deeply notched. L1 yoked, free margin always dentate, median cleft usually wide, sometimes more narrow; with a pair of setae in medial space; L2 bilobed, rounded, the medial lobule with fine basal scleroses extending onto venter, the lateral lobule smallest, sometimes dentate or notched, L3 bilobed, rounded, or notched, lateral lobule sometimes a point, L4 a marginal serration. Pygidium gland spines long, pointed, 1 pair on each segment. Marginal macroducts barrel-shaped, 7 pairs, their openings oval and slightly asymmetric to margin. Submedian and submarginal pygidial dorsal ducts about same size as marginal macroducts, in 2–4 short rows of 1–4 ducts each side usually on segments IV–VI; prepygidial dorsal ducts small, about 1/2 size of pygidial macroducts, distributed mostly on dorsal submargins and occasionally present on ventral submargins. Anal opening round, about 12.5–17.5 µm, positioned 60–100 µm from posterior margin. Ventral ducts, microducts, and gland tubercles as for genus. Antenna with 1 long seta and usually 2 or more short stubs. Anterior spiracles each with a group of 7–22 trilocular pores; posterior spiracles each with 0–12 trilocular pores. Perivular pores in 5 distinctly well separated, often rounded groups, a total of 55–82 pores on each female. Vulva positioned beneath level of anal opening.

## 2.6. References

- Henderson, R. C. (2011). Diaspididae (Insecta: Hemiptera: Coccoidea). \_Fauna of New Zealand 66\_, 275 pp. [See Web Links tab]

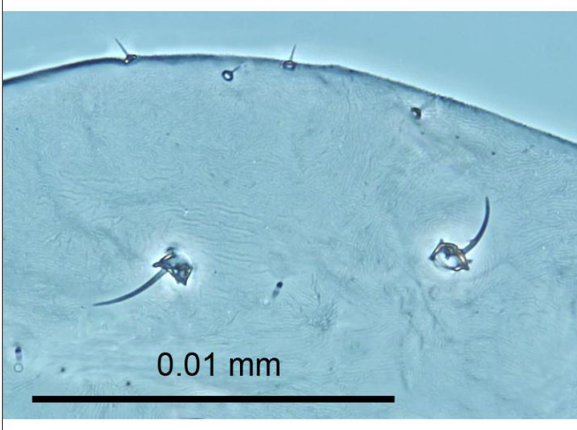
## 2.7. Web Links

**Scale Net:** <http://scalenet.info/validname/Fusilaspis/phymatodidis/>

**Henderson (2011):**

<http://www.landcareresearch.co.nz/research/biosystematics/invertebrates/faunaofnz/Extracts/FNZ66/FNZ66ind.asp>

### 3. Diagnostic Images



Slide mounted  
**Antenna - Female:** Rosa Henderson  
 Landcare Research



Slide mounted  
**Full body - Female:** Rosa Henderson  
 Landcare Research



Adult females, one with eggs, scale cover removed  
**Full body and eggs - Female In life:** Rosa Henderson  
 Landcare Research



Slide mounted  
**Lateral Abdomen - Female:** Rosa Henderson  
 Landcare Research

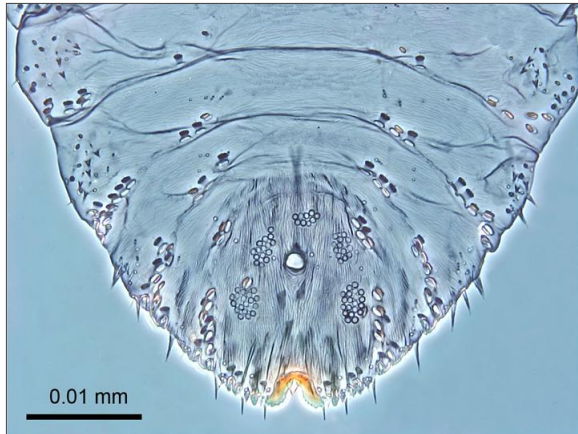


Slide mounted  
**Mouth and Spiracle - Female:** Rosa Henderson  
 Landcare Research

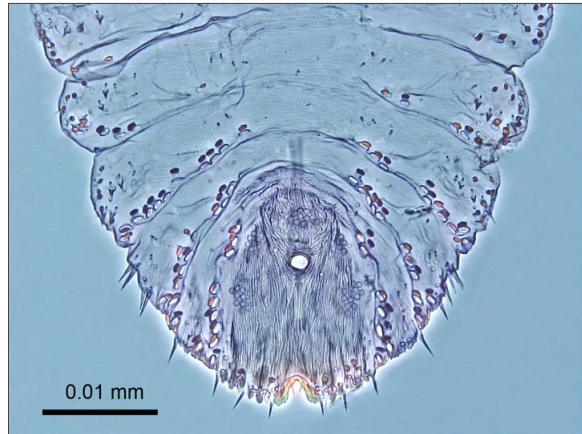


Slide mounted  
**Pygidium - Female:** Rosa Henderson  
 Landcare Research

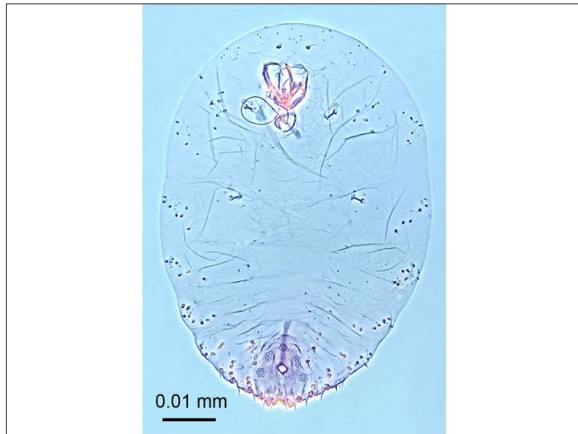
## 4. Other Images



Slide mounted  
**Abdomen - Female:** Rosa Henderson  
Landcare Research



Slide mounted  
**Abdomen Long - Female:** Rosa Henderson  
Landcare Research



Slide mounted  
**Full body - Female:** Rosa Henderson  
Landcare Research



**Adult females on Dicksonia**  
**In life - Image:** Rosa Henderson Landcare  
Research

Results Generated:

Tuesday, May 18, 2021