

1. PaDIL Species Factsheet



Scientific Name:

Lindingaspis rossi (Maskell, 1892)
(Hemiptera: Diaspididae)

Common Name

Ross's Black Scale

Live link: <http://www.padil.gov.au/maf-border/Pest/Main/141288>

Image Library

New Zealand Biosecurity

Live link: <http://www.padil.gov.au/maf-border/>

Partners for New Zealand Biosecurity image library



Manaaki Whenua
Landcare Research

Landcare Research — Manaaki Whenua

<http://www.landcareresearch.co.nz/>

Biosecurity New Zealand

Tiakitanga Pūtaiao Aotearoa

MPI (Ministry for Primary Industries)

<http://www.biosecurity.govt.nz/>

2. Species Information

2.1. Details

Specimen Contact: New Zealand Arthropod Collection - nzac@landcareresearch.co.nz

Author: Henderson, R. C. & Crosby, T. K.

Citation: Henderson, R. C. & Crosby, T. K. (2011) Ross's Black Scale (*Lindingaspis rossi*) Updated on 4/10/2014 Available online: PaDIL - <http://www.padil.gov.au>

Image Use: Free for use under the Creative Commons Attribution-NonCommercial 4.0 International (CC BY-NC 4.0)

2.2. URL

Live link: <http://www.padil.gov.au/maf-border/Pest/Main/141288>

2.3. Facets

Commodity Overview: Horticulture

Commodity Type: 1 Other, Fabaceous produce, Grapes, Sapindaceous produce, Avocado & Cinnamon, Citrus produce, Coconut, Rosaceous produce

Groups: Bugs

Status: NZ - Exotic

Pest Status: 0 Unknown

Distribution: Afrotropic, Australasia, Indo-Malaya, Nearctic, Neotropic, Oceania, Palearctic

Host Family: Anacardiaceae, Apocynaceae, Araliaceae, Araucariaceae, Arecaceae, Asteraceae, Capparaceae, Celastraceae, Crassulaceae, Cunoniaceae, Cycadaceae, Ebenaceae, Euphorbiaceae, Fabaceae, Flacourtiaceae, Guttiferae, Lamiaceae, Lecythidaceae, Loranthaceae, Meliaceae, Moraceae, Myrtaceae, Oleaceae, Orchidaceae, Pandanaceae, Pinaceae, Pittosporaceae, Podocarpaceae, Polygonaceae, Proteaceae, Rhizophoraceae, Rosaceae, Rubiaceae, Rutaceae, Sapindaceae, Scrophulariaceae, Taxodiaceae, Theaceae, Verbenaceae, Vitaceae, Xanthorrhoeaceae, Epacridaceae, Lomandraceae

2.4. Other Names

Aonidiella subrossi Laing, 1929

Araucaria Black Scale

Aspidiotus rossi Maskell, 1892

Chrysomphalus niger Laing, 1929

Chrysomphalus rossi (Maskell, 1892) Leonardi, 1897

Circular Black Scale

Lindingaspis rossi (Maskell, 1892) Ferris, 1938

Melanaspis rossi (Maskell, 1892) Lindinger, 1910

Melanaspis subrossi (Laing, 1929) Lindinger, 1943

2.5. Diagnostic Notes

Source: Henderson (2011) [See Web Links tab]

Live Appearance and Habitat

Female scale cover flat, subcircular with exuvia subcentral, usually black with lighter concentric rings of 1st- and 2nd-exuvia, overall more grey coloured when on exposed leaves in full sun. Male scale cover smaller, oval with exuvia towards one end. Young female pale pinkish becoming red-brown, with pale yellow pygidium; mature female and crawlers dark red-brown. On either upperside or underside of leaves, not stems or bark.

****Diagnosis****

Adult female body shape turbinate with narrow, elongate pygidium, margin of pygidium appearing fringed with numerous slender paraphyses that decrease in size laterally to segment IV, longest by the lobes. With 3 pairs of lobes, each rather hoof-shaped, wider than long, notched laterally, with rounded apex, not bilobed, each with 1 pair of paraphyses.

Dorsal ducts 1-barred, arranged in furrows on pygidium, of 2 sizes, (i) the larger arising either side of L2; (ii) the long and slender arising further forward. Plates fringed between lobes, then less obviously divided between L3 and the tooth-like points of L4.

Ventral marginal-submarginal microducts in a band from pygidium to metathorax as far forward as dome-shaped eye spur, laterad of posterior spiracle. Antenna with 1 seta and small stubs. Spiracles without pores. Perivulvar pores present in 5 small groups.

****Source:** [ScaleNet](http://scalenet.info)**

****Keys****

Miller & Davidson (2005). Evans, Watson & Miller 2009: 63-67 (female) species found on avocado; Williams & Watson 1988: 172 (female) [Tropical South Pacific]; Chou 1985: 321 (female) [Species of China]; Williams 1963b: 13 (female) [World]; Balachowsky 1958b: 166 (female) [Africa]; McKenzie 1956: 26 (female) [U.S.A.: California]; McKenzie 1950: 109 (female) [World]; Ferris 1942: 35 (female) [North America]; Kuwana 1933: 26 (female) [Japan]; Kuwana 1933b: 49 (female) [Japan]; Fullaway 1932: 95-97, 107 (female) [Hawaii]; Brain 1919: 198 (female) [South Africa]; Robinson 1917: 24 (female) [Philippines]; Green 1896e: 40 (female) [Sri Lanka].

2.6. References

- Henderson, R.C. (2011). Diaspididae (Insecta: Hemiptera: Coccoidea). *Fauna of New Zealand 66*, 275 pp. [See Web Links tab] - Miller, D.R. & Davidson, J.A. (2005). *Armored scale insect pests of trees and shrubs*. Cornell University Press, N.Y. 442 pp. - Watson, G.W. (2002). *Arthropods of Economic Importance: Diaspididae of the World*. World Biodiversity Database, CD-ROM. Expert Center for Taxonomic Identification (ETI), University of Amsterdam, The Netherlands.

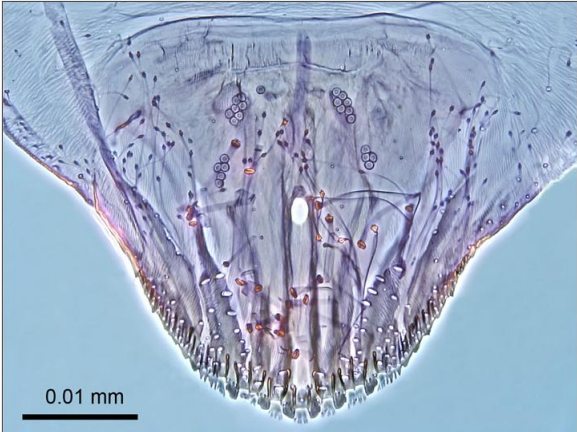
2.7. Web Links

Scale Net: <http://scalenet.info/validname/Lindingaspis/rossi/>

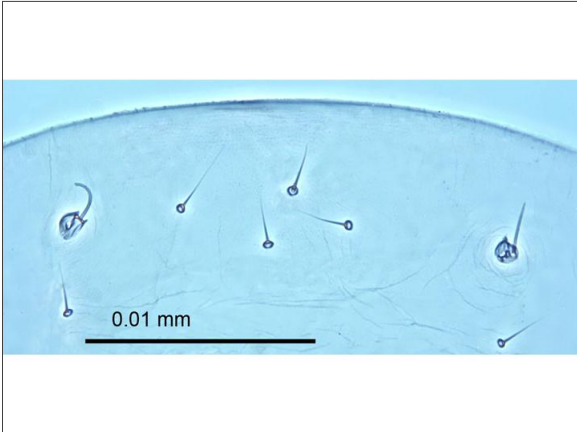
Henderson (2011):

<http://www.landcareresearch.co.nz/research/biosystematics/invertebrates/faunaofnz/Extracts/FNZ66/FNZ66ind.asp>

3. Diagnostic Images



Slide mounted
Abdomen - Female: Rosa Henderson
 Landcare Research



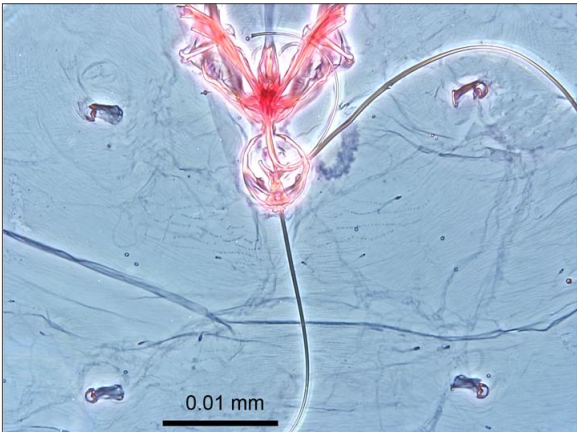
Slide mounted
Antenna - Female: Rosa Henderson
 Landcare Research



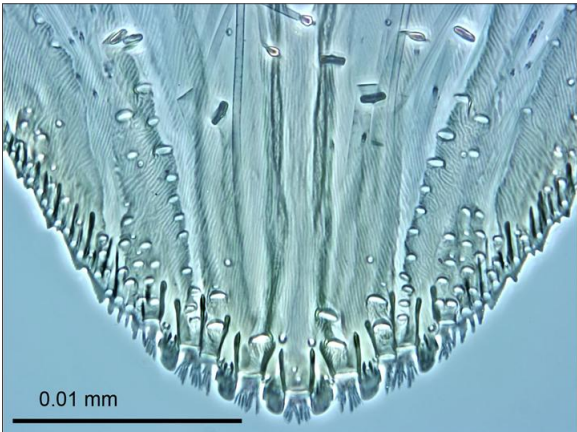
Slide mounted
Full body - Female: Rosa Henderson
 Landcare Research



Adult female with female and male 2nd-instar nymphs
In life - Male and Female: Rosa Henderson
 Landcare Research



Slide mounted
Mouth and Spiracle - Female: Rosa Henderson
 Landcare Research



Slide mounted
Pygidium - Female: Rosa Henderson
 Landcare Research

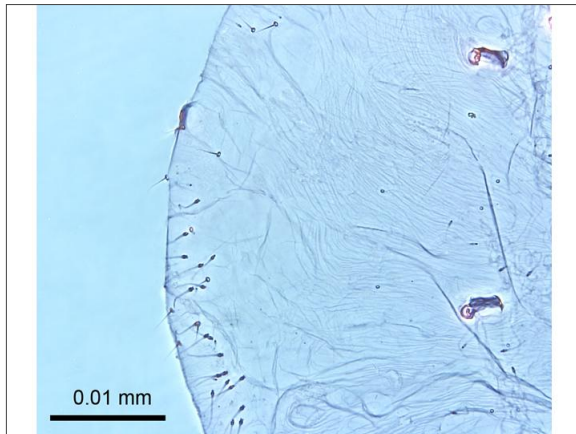
4. Other Images



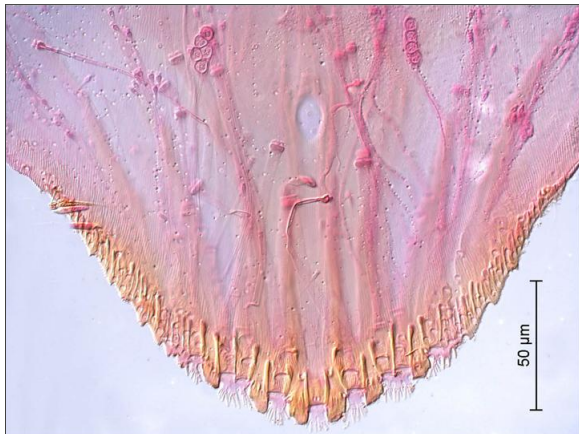
NZA642. Magnification: 20x.
Body: Qing Hai Fan MAF



Mature female and crawlers from brood chamber, scale cover overturned with eggshells inside
Full body and eggs - Female In life: Rosa Henderson Landcare Research



Slide mounted
Lateral Abdomen - Female: Rosa Henderson Landcare Research



NZA642. Magnification: 40x.
Pygidium - Ventral - Adult: Qing Hai Fan MAF

Results Generated:

Monday, August 15, 2022