

1. PaDIL Species Factsheet



Scientific Name:

Pulvinaria psidii Maskell, 1893

(Hemiptera: Coccidae: Coccinae: Pulvinariini)

Common Name

Green Shield Scale

Live link: <http://www.padil.gov.au/maf-border/Pest/Main/141312>

Image Library

New Zealand Biosecurity

Live link: <http://www.padil.gov.au/maf-border/>

Partners for New Zealand Biosecurity image library



Manaaki Whenua
Landcare Research

Landcare Research — Manaaki Whenua

<http://www.landcareresearch.co.nz/>

Biosecurity New Zealand

Tiakitanga Pūtaiao Aotearoa

MPI (Ministry for Primary Industries)

<http://www.biosecurity.govt.nz/>

2. Species Information

2.1. Details

Specimen Contact: New Zealand Arthropod Collection - nzac@landcareresearch.co.nz

Author: Henderson, R. C. & Crosby, T. K.

Citation: Henderson, R. C. & Crosby, T. K. (2011) Green Shield Scale (*Pulvinaria psidii*) Updated on 4/17/2014

Available online: PaDIL - <http://www.padil.gov.au>

Image Use: Free for use under the Creative Commons Attribution-NonCommercial 4.0 International (CC BY-NC 4.0)

2.2. URL

Live link: <http://www.padil.gov.au/maf-border/Pest/Main/141312>

2.3. Facets

Commodity Overview: Horticulture

Commodity Type: 1 Other, Capsicum & Chilli pepper, Citrus produce, Coffee beans & Kape, Figs & Breadfruit, Ginger, Rosaceous produce, Sapindaceous produce

Groups: Bugs

Status: NZ - Exotic

Pest Status: 0 Unknown

Distribution: Afrotropic, Australasia, Indo-Malaya, Nearctic, Neotropic, Oceania, Palearctic

Host Family: Acanthaceae, Aizoaceae, Amaranthaceae, Amaryllidaceae, Anacardiaceae, Annonaceae, Apocynaceae, Araceae, Araliaceae, Aspleniaceae, Asteraceae, Bignoniaceae, Cannaceae, Caryophyllaceae, Celastraceae, Chenopodiaceae, Clusiaceae, Combretaceae, Convolvulaceae, Crassulaceae, Ebenaceae, Euphorbiaceae, Goodeniaceae, Hamamelidaceae, Lauraceae, Lecythidaceae, Liliaceae, Lythraceae, Malvaceae, Melastomataceae, Moraceae, Myristicaceae, Oleaceae, Onagraceae, Orchidaceae, Pandanaceae, Pinaceae, Piperaceae, Pittosporaceae, Polygonaceae, Pteridaceae, Rosaceae, Rubiaceae, Rutaceae, Salicaceae, Sapindaceae, Sapotaceae, Scrophulariaceae, Solanaceae, Tamaricaceae, Theaceae, Verbenaceae, Zingiberaceae, Dicksoniaceae, Geraniaceae, Polemoniaceae, Punicaceae, Violaceae

2.4. Other Names

Chloropulvinaria psidii Borchsenius, 1957

Guava Mealy Scale

Lecanium vacuolatum Dash, 1916

Pulvinaria cupaniae Cockerell, 1893

Pulvinaria cussoniae Hall, 1932

Pulvinaria darwiniensis Froggatt, 1915

Pulvinaria gymnosporiae Hall, 1932

Pulvinaria psidii Maskell, 1893

Pulvinaria psidii philippina Cockerell, 1905

2.5. Diagnostic Notes

Source: Williams & Watson (1990)

Body of adult female oval, up to 4.5 mm long. Dorsum remaining membranous or only slightly sclerotised at

maturity, with numerous areolations present, these large in submarginal zone, minute towards median areas, each areolation associated with a minute pore or with a small tubular duct, present in equal numbers. Antennae each with 8 segments. Legs well developed, each with a tibiotarsal articulatory sclerosis. Marginal setae short, each usually expanded and flattened towards the apex, fimbriated, the tip often wider than the setal collar. Stigmatic setae present in groups of 3, each group with the median seta longer than a lateral seta and longer than a marginal seta. Submarginal tubercles usually numbering up to 8, rarely absent. Spiracles in mature specimens often with a crescentic sclerotised area surrounding each. Anal plates triangular, together quadratic, each plate with 4 apical setae present. Multilocular disc pores, each usually with 10 loculi, present in vulvar region and in loose transverse rows on abdomen, and in groups lateral to coxae. Microducts present on venter around margins, scattered elsewhere. Tubular ducts numerous in a submarginal band and across segments, of 2 main types. One type, each with a thick filament, present mainly in median areas, and another type, each with a long thin filament, present mainly in a submarginal zone. Dorsal setae short and pointed.

****Source:** [ScaleNet](http://scalenet.info)**

****Keys****

Tanaka et al. 2006: 180 (female) [*Pulvinaria* species of Ryuku archipelago]; Kosztarab 1996: 375 (female) [Northeastern North America]; Tang 1991: 226 (female) [China]; Williams & Watson 1990: 148 (female) [Tropical South Pacific]; Hamon & Williams 1984: 87 (female) [USA, Florida]; Tao et al. 1983: 83 (female) [Taiwan]; Kawai 1980: 148-150 (female) [Japan]; Williams & Kosztarab 1972: 119 (female) [USA, Virginia]; Ezzat & Hussein 1969: 373 (female) [Egypt]; Beardsley 1966: 491 (female) [Micronesia]; Borchsenius 1957: 205 (female) [Palearctic region]; Zimmerman 1948: 333 (female) [Hawaii]; Green 1909a: 264-265 (female) [Ceylon].

2.6. References

- Miller, D.R., Rung, A., Venable, G.L. & Gill, R.J. (2007). *_Scale Insects: Identification tools, images and diagnostic information for species of quarantine significance_* (CD-ROM). USDA, SEL, APHIS. - Williams, D.J. & Watson, G.M. (1990). *_The scale insects of the tropical South Pacific region. Part 3. The soft scales (Coccidae) and other families_*. CAB International, Wallingford. 267 pp.

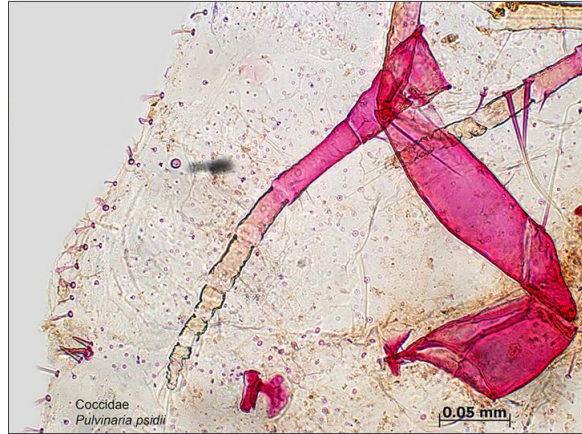
2.7. Web Links

Scale Net: <http://scalenet.info/validname/Pulvinaria/psidii/>

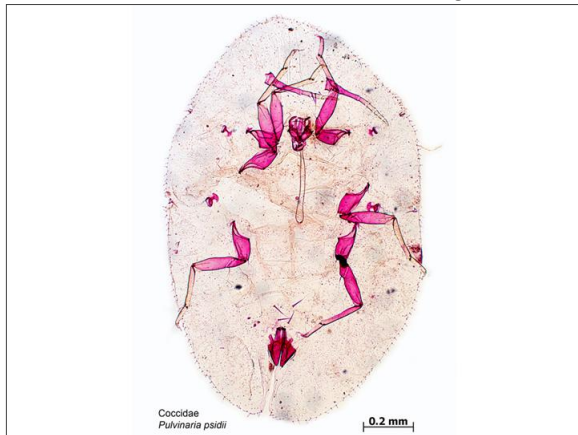
3. Diagnostic Images



HEM80 - Slide mounted
Anal Plate - Adult: Caroline Harding MAF



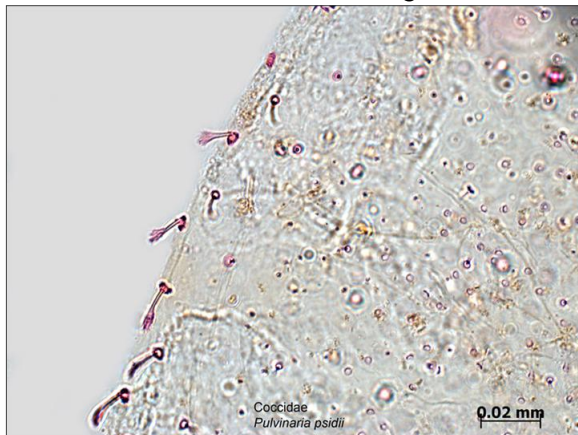
HEM80 - Slide mounted
Antenna - Adult: Caroline Harding MAF



HEM80 - Slide mounted
Dorsal - Adult: Caroline Harding MAF



HEM80 - Slide mounted
Hindleg - Adult: Caroline Harding MAF



HEM80 - Slide mounted
Pores and Setae - Adult: Caroline Harding MAF



HEM80 - Slide mounted
Spiracle - Adult: Caroline Harding MAF

Results Generated:

Wednesday, December 2, 2020