

# 1. PaDIL Species Factsheet



---

## Scientific Name:

*Nipaecoccus nipae* (Maskell)  
(Hemiptera: Pseudococcidae)

## Common Name

Coconut Mealy Bug

Live link: <http://www.padil.gov.au/maf-border/Pest/Main/142945>

## Image Library

New Zealand Biosecurity

Live link: <http://www.padil.gov.au/maf-border/>

## Partners for New Zealand Biosecurity image library



Manaaki Whenua  
Landcare Research

Landcare Research — Manaaki Whenua

<http://www.landcareresearch.co.nz/>

**Biosecurity New Zealand**

Tiakitanga Pūtaiao Aotearoa

MPI (Ministry for Primary Industries)

<http://www.biosecurity.govt.nz/>

## 2. Species Information

### 2.1. Details

**Specimen Contact:** New Zealand Arthropod Collection - [nzac@landcareresearch.co.nz](mailto:nzac@landcareresearch.co.nz)

**Author:** Rhode, B.E. & Crosby, T.K.

**Citation:** Rhode, B.E. & Crosby, T.K. (2013) Coconut Mealy Bug (*Nipaecoccus nipae*) Updated on 4/15/2014

Available online: PaDIL - <http://www.padil.gov.au>

**Image Use:** Free for use under the Creative Commons Attribution-NonCommercial 4.0 International (CC BY-NC 4.0)

### 2.2. URL

Live link: <http://www.padil.gov.au/maf-border/Pest/Main/142945>

### 2.3. Facets

**Commodity Overview:** Field Crops and Pastures, Horticulture

**Commodity Type:** Avocado & Cinnamon, Banana, Citrus produce, Coconut, Coffee beans & Kape, Figs & Breadfruit, Ginger, Grapes, Guava, Mango, Paw paw, Pineapple, Potato

**Distribution:** Australasia, Indo-Malaya, Nearctic, Neotropic, Palearctic

**Groups:** Bugs

**Host Family:** Agavaceae, Anacardiaceae, Annonaceae, Araceae, Bombacaceae, Bromeliaceae, Cannaceae, Caricaceae, Chrysobalanaceae, Clusiaceae, Dilleniaceae, Euphorbiaceae, Fabaceae, Heliconiaceae, Lauraceae, Liliaceae, Malvaceae, Melastomaceae, Moraceae, Musaceae, Myrtaceae, Oleaceae, Orchidaceae, Pandanaceae, Polygonaceae, Proteaceae, Rubiaceae, Rutaceae, Solanaceae, Sterculiaceae, Strelitziaceae, Styracaceae, Tiliaceae, Urticaceae, Verbenaceae, Vitaceae, Zingiberaceae, Barringtoniaceae, Costaceae, Cyclanthaceae, Hypoxidaceae

**Pest Status:** 0 Unknown

**Status:** 0 NZ - Unknown

### 2.4. Other Names

*Ceroputo nipae* Lindinger, 1924

*Cochonilha-algodao-amarelo*

*Dactylopius dubia* Maxwell-Lefroy, 1903

*Dactylopius nipae* Maskell, 1893

*Dactylopius pseudonipae* Cockerell, 1897

*Kentia Mealybug*;

*Nipaecoccus nipae* Šulc, 1945

*Nipaecoccus pseudonipae* Beardsley, 1960

*Pseudococcus magnoliae* Hambleton, 1935

*Pseudococcus nipae* Cockerell, 1902

*Pseudococcus pseudonipae* Fernald, 1903

*Ripersia nipae* Gómez-Menor Ortega, 1937

*Ripersia serrata* Tinsley, 1900

### 2.5. Diagnostic Notes

\*\*Description from McKenzie (1967)\*\*

Adult female, mounted, 1.90-2.20 mm long, 1.20-2.00 mm wide; body form normally rotund; derm at maturity

frequently quite strongly pigmented. Legs small but not especially stout; hind coxa with a few translucent pores at base. Antennae usually 7-segmented, rarely with 6 segments.

Dorsum with definite cerarii confined to abdominal segments. Anal lobe cerarius with 2 moderately large, conical setae, few trilocular pores, these borne in quite distinct sclerotisation. Abdominal cerarii anterior to anal lobes with cerarian setae slightly smaller, retaining conical form, these usually rather widely separated, thoracic areas and head without definite cerarii, although some irregular clustering of setae noticeable along margin, cluster on head at times assuming at most a slight appearance of being cerarii. Dorsal ostioles well developed.

Dorsum with trilocular pores rather numerous, evenly distributed. Minute circular pores scattered. Tubular ducts absent. Dorsal body setae almost exclusively of same form as those of cerarii, tending to be smaller and arranged in 4 longitudinal rows. Anal ring somewhat removed from posterior apex of abdomen; its 6 setae about twice as long as diameter of ring.

Venter with very few multilocular disc pores, these situated between vulva and circulus. Entire venter very sparsely provided with trilocular pores. Minute circular pores scattered. Very few small tubular ducts scattered on abdomen and sternal areas. Body setae small, slender, sparsely distributed.

Circulus present, small and circular.

#### **\*\*Biology\*\***

Occurring on the foliage of its host plants.

#### **\*\*Structure\*\***

Colour photograph of the general appearance of the adult female given by Carvalho & Aguiar (1997).

#### **\*\*Foes\*\***

COLEOPTERA Coccinellidae: *\_Curinus coeruleus\_* Mulsant, *\_Hyperaspis silvestrii\_* Weise, *\_Scymnus roseicollis\_* Mulsant, *\_Zilus viridimicans\_* Sic.

HYMENOPTERA Encyrtidae: *\_Pseudaphycus utilis\_* Timberlake.

#### **\*\*General Remarks\*\***

Description and illustration of adult female by Hempel (1929), Neves (1935), Gomez-Menor Ortega (1937), Ferris in Zimmerman (1948), Borchsenius (1949), Ferris (1950b), McKenzie (1967), Paik (1978), Zahradnik (1990), Williams & Granara de Willink (1992) and by Williams (2004a). Description and illustration of adult male by Beardsley (1960) and by Afifi (1968).

#### **\*\*Keys\*\***

Parsa et al. 2012: 8-10 (adult, female); Williams 2004a: 442 (female); Williams & Granara de Willink 1992: 240 (female); Williams 1985: 229 (female); McKenzie 1967: 206 (female); Beardsley 1960: 212 (male); Ferris 1953a: 388 (female); Ferris 1950b: 103 (female); Zimmerman 1948: 176 (female).

## 2.6. References

- <http://www.sel.barc.usda.gov/catalogs/pseudoco/Nipaecoccusnipae.htm> - Williams, D.J. & Watson, G.W.

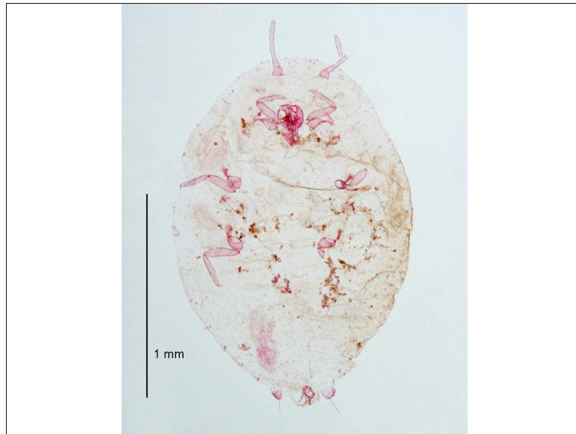
(1988). \_The scale insects of the tropical South Pacific region. Part 2. The mealybugs (Pseudococcidae)\_. CAB International, Wallingford. 262 pp. -

<http://www.sel.barc.usda.gov/ScaleKeys/Mealybugs/Key/Mealybugs/Media/html/SelectSpeciesFSet.html>

## 2.7. Web Links

**ScaleNet:** <http://www.sel.barc.usda.gov/catalogs/pseudoco/Nipaecoccusnipae.htm>

### 3. Diagnostic Images



*Nipaecoccus nipae* found on 'abiu' in Western Samoa  
**Dorsal:** Rhode, B.E. Landcare Research



*Nipaecoccus nipae* found on *Chamaedorea*  
**In Life:** R. J. Gill, 1977 ScaleNet



*Nipaecoccus nipae* found on *Chamaedorea*  
**In Life:** R.J. Gill, 1977 ScaleNet



*Nipaecoccus nipae* found on *Strelitzia*  
**In Life:** R.J. Gill, 1980 ScaleNet



*Nipaecoccus nipae* found on *Strelitzia*  
**In Life:** R.J. Gill, 1980 ScaleNet



*Nipaecoccus nipae* found on *Strelitzia*  
**In Life:** R.J. Gill, 1980 ScaleNet



*Nipaecoccus nipae* found on *Chamaedorea*  
**In Life:** R.J. Gill, 1977 ScaleNet



*Nipaecoccus nipae* found on coconut palm  
**In Life:** R.J. Gill, 1975 ScaleNet



*Nipaecoccus nipae* found on coconut palm  
**In Life:** R.J. Gill, 1975 ScaleNet



*Nipaecoccus nipae* found on *Strelitzia*  
**In Life:** R.J. Gill, 1980 ScaleNet



*Nipaecoccus nipae* found on *Trema micrantha*  
**In Life:** R.J. Gill, 1985 ScaleNet



*Nipaecoccus nipae* found on *Trema micrantha*  
**In Life:** R.J. Gill, 1985 ScaleNet



*Nipaecoccus nipae* found on *Trema micrantha*  
**In Life:** R.J. Gill, 1985 ScaleNet



*Nipaecoccus nipae* found on *Kentia* (palm)  
**In Life:** L.R. Brown, 1952 ScaleNet

# Results Generated:

Monday, August 15, 2022

---