

1. PaDIL Species Factsheet



Scientific Name:

Albugo candida (Pers.) Roussel

(Oomycota: Oomycetes: Albuginales: Albuginaceae)

Common Name

Albugo candida

Live link: <http://www.padil.gov.au/maf-border/Pest/Main/142959>

Image Library

New Zealand Biosecurity

Live link: <http://www.padil.gov.au/maf-border/>

Partners for New Zealand Biosecurity image library



Manaaki Whenua
Landcare Research

Landcare Research — Manaaki Whenua

<http://www.landcareresearch.co.nz/>

Biosecurity New Zealand

Tiakitanga Pūtaiao Aotearoa

MPI (Ministry for Primary Industries)

<http://www.biosecurity.govt.nz/>

2. Species Information

2.1. Details

Specimen Contact: Eric McKenzie - mckenziee@landcareresearch.co.nz

Author: McKenzie, E.

Citation: McKenzie, E. (2013) *Albugo candida* (*Albugo candida*) Updated on 7/18/2013 Available online: PaDIL - <http://www.padil.gov.au>

Image Use: Free for use under the Creative Commons Attribution-NonCommercial 4.0 International (CC BY-NC 4.0)

2.2. URL

Live link: <http://www.padil.gov.au/maf-border/Pest/Main/142959>

2.3. Facets

Commodity Overview: Field Crops and Pastures

Commodity Type: Cruciferous produce

Distribution: Oceania, Afrotropic, Antarctic, Australasia, Indo-Malaya, Nearctic, Neotropic, Palearctic

Groups: Fungi & Mushrooms

Host Family: Brassicaceae

Pest Status: 2 NZ - Regulated pest

Status: NZ - Exotic

2.4. Other Names

Cystopus candidus (Pers.) Lév.

2.5. Diagnostic Notes

Disease

White blister, white rust. White or yellowish sporangial pustules (blisters), often in concentric groups and often confluent, mainly on lower surface of leaves, also on petioles and flowers, sometimes causing hypertrophy.

Morphology

Sporangiophores 30-45 x 15-18 µm, non-septate, hyaline. _Sporangia_ in basipetal chains (oldest at top), globose to oval, 12-18 µm diam., hyaline, thin-walled. _Oospores_ rarely found in leaves, usually in stems, globose, brownish, 30-55 µm diam., wall thick, tuberculate with low blunt ridges that are often confluent and irregularly branched.

Notes

Recent molecular studies have enabled distinct species to be separated from *_Albugo candida_* sens lat. However, it has also been found that *_A. candida_* sens. str. has a wide host range within the *_Brassicaceae_* and also extends to the closely related *_Cleomaceae_* and *_Capparaceae_* (Choi, et al., 2007).

2.6. References

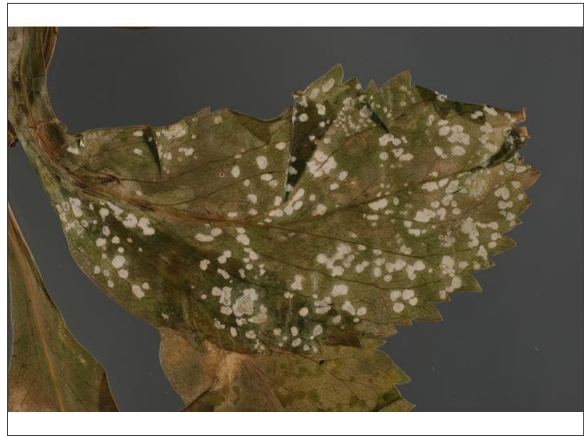
- Choi, Y.-J., Shin, H.-D. & Thines, M. (2009). The host range of *_Albugo candida_* extends from

Brassicaceae through Cleomaceae to Capparaceae. *Mycological Progress*, 8, 329-335. - Gerlach, W.W.P. (1988). *Plant Diseases of Western Samoa*. *Samoan German Crop Protection Project, Apia, Western Samoa*, pp. 54-55. - Mukerji, K.G. (1975). *Albugo candida*. *CMI Descriptions of Pathogenic Fungi and Bacteria*, 460, 1-2.

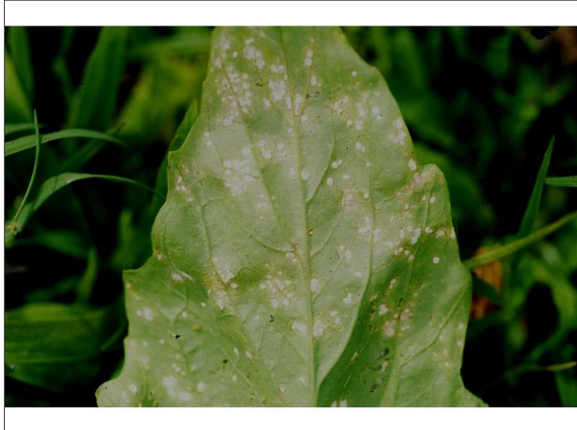
3. Diagnostic Images



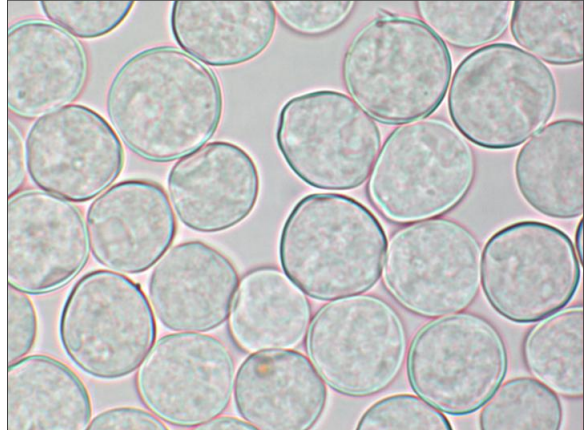
Albugo candida sporangial pustules on leaves of *Lepidium oleraceum*
In Life: E. Cameron, 2008 Landcare Research



Albugo candida sporangial pustules on leaves of *Lepidium oleraceum*
In Life: E. McKenzie, 2011 Landcare Research



Albugo candida sporangial pustules on leaves of Chinese cabbage
In Life: E. McKenzie Landcare Research



Albugo candida sporangia
Sporangia: E. McKenzie Landcare Research

Results Generated:

Sunday, January 17, 2021
