

1. PaDIL Species Factsheet



Scientific Name:

Popillia japonica Newman 1841

(Coleoptera: Scarabaeidae: Rutelinae: Anomalini)

Common Name

Japanese beetle

Live link: <http://www.padil.gov.au/pests-and-diseases/Pest/Main/135595>

Image Library

Australian Biosecurity

Live link: <http://www.padil.gov.au/pests-and-diseases/>

Partners for Australian Biosecurity image library



Australian Government
Department of Agriculture,
Water and the Environment

Department of Agriculture, Water and the Environment

<https://www.awe.gov.au/>



Department of
Primary Industries and
Regional Development

Department of Primary Industries and Regional Development,

Western Australia

<https://dpird.wa.gov.au/>



Plant Health Australia

<https://www.planthealthaustralia.com.au/>



Museums Victoria

<https://museumsvictoria.com.au/>

2. Species Information

2.1. Details

Specimen Contact: Department of Agriculture Western Australia -

Author: Graham, R.

Citation: Graham, R. (2005) Japanese beetle (*Popillia japonica*) Updated on 11/5/2021 Available online: PaDIL - <http://www.padil.gov.au>

Image Use: Free for use under the Creative Commons Attribution-NonCommercial 4.0 International (CC BY-NC 4.0)

2.2. URL

Live link: <http://www.padil.gov.au/pests-and-diseases/Pest/Main/135595>

2.3. Facets

Status: Exotic species - absent from Australia

Group: Beetles

Commodity Overview: General, Field Crops and Pastures, Horticulture, Forestry

Commodity Type: General, Timber, Fresh Flowers, Fresh Roots, Fresh Stems, Fresh Vegetables, Fresh Fruit, Grasses, Pastures, Ornamentals, Viticulture, Beans & Peas, Pome fruits, Stone fruits, Berries

Distribution: USA and Canada, Europe and Northern Asia, South and South-East Asia

2.4. Other Names

Aserica japonica (Motschulsky)

Autoserica japonica (Motschulsky)

Maladera japonica (Motschulsky)

Serica japonica (Motschulsky)

2.5. Diagnostic Notes

The adult is an attractive, broadly oval beetle, 8-11 mm long, and about 5-7 mm wide. Females usually are slightly larger than males. The head and body are dark, metallic green, with darker coppery-green legs. The coppery-brown elytra, which do not quite reach the tip of the abdomen, expose a row of 5 lateral patches of white hairs on each side of the abdomen and a pair of these patches on the dorsal surface of the last abdominal segment. These white patches on the green abdomen distinguish *P. japonica* from all other beetles that resemble it.

(CABI 2004)

2.6. References

Arnett, R.H., Jr., M. C. Thomas, P. E. Skelley and J. H. Frank. (eds.). 2002. AMERICAN BEETLES. Volume 2. Polyphaga: Scarabaeoidea through Curculionoidea. CRC Press LLC, Boca Raton, FL. xiv + 861 pp. CPC (2004) Crop Protection Compendium. CAB International, Wallingford, UK,.

<http://www.cabicompendium.org/cpc/home.asp> Fleming, W.E. (1972b) Biology of the Japanese beetle.

Technical Bulletin, Agricultural Research Service, US Department of Agriculture No. 1449, iv + 129 pp.

Gordon, F.C.; Potter, D.A. (1986) Japanese beetle (Coleoptera: Scarabaeidae) traps: evaluation of single and multiple arrangements for reducing defoliation in urban landscape. Journal of Economic Entomology 79, 1381-1384. OEPP/EPPO Data sheets on quarantine organisms No. 40, *Popillia japonica*.

http://www.eppo.org/QUARANTINE/insects/Popillia_japonica/POPIJA_ds.pdf

2.7. Web Links

Biology: <http://www.inspection.gc.ca/english/sci/surv/data/popjape.shtml>

Datasheet - Quarantine pest: http://www.eppo.org/QUARANTINE/insects/Popillia_japonica/POPIJA_ds.pdf

Description and Life Cycle: <http://www.uky.edu/Agriculture/Entomology/entfacts/trees/ef409.htm>

Featured Creature: http://creatures.ifas.ufl.edu/orn/beetles/japanese_beetle.htm

USDA Information sheet: http://www.pueblo.gsa.gov/cic_text/housing/japanese-beetle/jbeetle.html

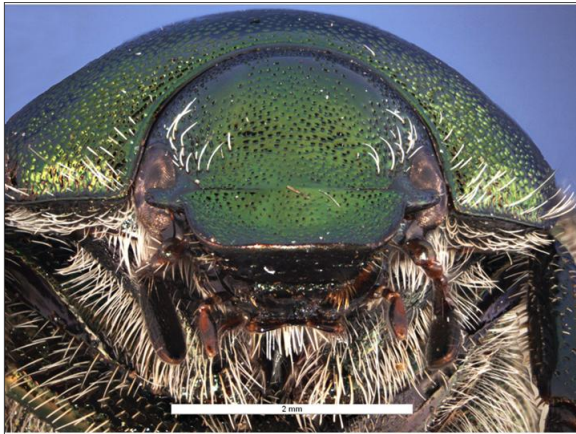
3. Diagnostic Images



Specimen Locality Label: Bloomington
Monroe County, Indiana, USA. 30.viii.1989
Coll: F.N. Young
Dorsal View: Rebecca Graham Department
of Agriculture Western Australia



Specimen Locality Label: Bloomington
Monroe County, Indiana, USA. 30.viii.1989
Coll: F.N. Young
Foreleg: Rebecca Graham Department of
Agriculture Western Australia



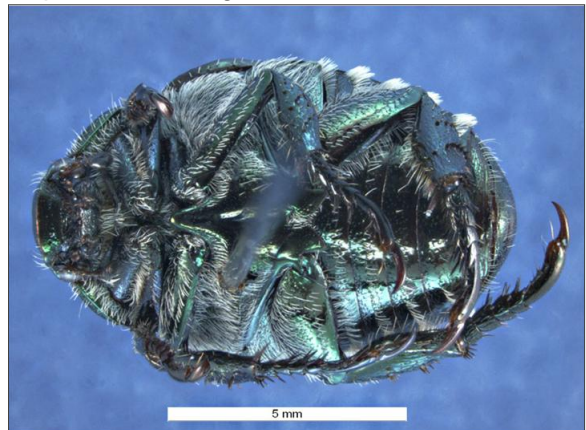
Specimen Locality Label: Bloomington
Monroe County, Indiana, USA. 30.viii.1989
Coll: F.N. Young
Head - Front View: Rebecca Graham
Department of Agriculture Western Australia



Specimen Locality Label: Bloomington
Monroe County, Indiana, USA. 30.viii.1989
Coll: F.N. Young
Head - Side View: Rebecca Graham
Department of Agriculture Western Australia



Specimen Locality Label: Bloomington
Monroe County, Indiana, USA. 30.viii.1989
Coll: F.N. Young
Lateral View: Rebecca Graham Department
of Agriculture Western Australia



Specimen Locality Label: Bloomington
Monroe County, Indiana, USA. 30.viii.1989
Coll: F.N. Young
Ventral View: Rebecca Graham Department
of Agriculture Western Australia

Results Generated:

Friday, December 3, 2021
