

1. PaDIL Species Factsheet



Scientific Name:

Listroderes difficilis Germain

(Coleoptera: Curculionidae: Brachycerinae: Rhytirrhini)

Common Name

Vegetable weevil

Live link: <http://www.padil.gov.au/pests-and-diseases/Pest/Main/135871>

Image Library

Australian Biosecurity

Live link: <http://www.padil.gov.au/pests-and-diseases/>

Partners for Australian Biosecurity image library



Australian Government
Department of Agriculture,
Water and the Environment

Department of Agriculture, Water and the Environment

<https://www.awe.gov.au/>



Department of
Primary Industries and
Regional Development

Department of Primary Industries and Regional Development,

Western Australia

<https://dpird.wa.gov.au/>



Plant Health Australia

<https://www.planthealthaustralia.com.au/>



Museums Victoria

<https://museumsvictoria.com.au/>

2. Species Information

2.1. Details

Specimen Contact: Museum Victoria - discoverycentre@museum.vic.gov.au

Author: Walker, K.

Citation: Walker, K. (2006) Vegetable weevil (*Listroderes difficilis*) Updated on 10/13/2021 Available online: PaDIL - <http://www.padil.gov.au>

Image Use: Free for use under the Creative Commons Attribution-NonCommercial 4.0 International (CC BY-NC 4.0)

2.2. URL

Live link: <http://www.padil.gov.au/pests-and-diseases/Pest/Main/135871>

2.3. Facets

Status: Exotic Species Occurrence in Australia

Group: Beetles

Commodity Overview: Horticulture

Commodity Type: Fresh Roots, Fresh Stems, Fresh Vegetables, Leaves, Viticulture, Beans & Peas

Distribution: USA and Canada, Central and South America, Africa, Australasian - Oceanian

2.4. Other Names

Listroderes costirostris Schönherr

Listroderes obliquus Klug

2.5. Diagnostic Notes

Adults are dull, gray-brown, about 1 cm long, with an inconspicuous, pale gray V-shaped mark near the end of each wing cover; body is covered with tan or gray scales and scattered hairs.

2.6. Web Links

Description, images, damage: http://www.ent.uga.edu/veg/solanaceous/veg_weevil.pdf

Fact sheet: <http://www.extento.hawaii.edu/kbase/crop/Type/listrode.htm>

Fact sheet 2: <http://www.gaipm.org/top50/vegetable.html>

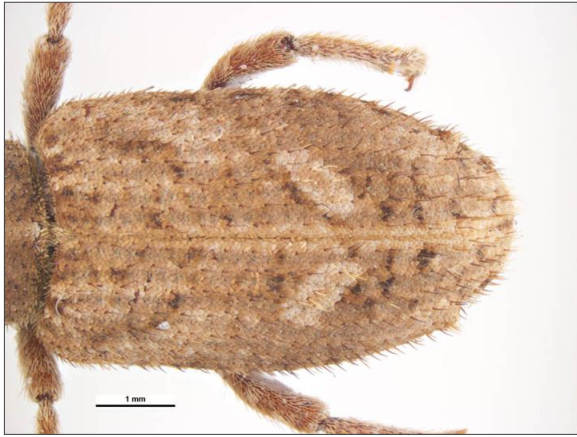
3. Diagnostic Images



Papa Ovalie, 21 November 1984, R. Muuoz.
Det M. Elgueta, 1993
Antenna Image: Sarah McCaffrey Museums
Victoria



Australia: Victoria, Eltham, C. Oke
Dorsal view - female: Simon Hinkley & Ken
Walker Museums Victoria



Australia: Victoria, Eltham, C. Oke
Elytra - female: Simon Hinkley & Ken Walker
Museums Victoria



Australia: Victoria, Eltham, C. Oke
Head front female: Simon Hinkley & Ken
Walker Museums Victoria



Australia: Victoria, Eltham, C. Oke
Head side - female: Simon Hinkley & Ken
Walker Museums Victoria



Australia: Victoria, Eltham, C. Oke
Lateral view - female: Simon Hinkley & Ken
Walker Museums Victoria



Australia: Victoria, Eltham, C. Oke
Posterior view female: Simon Hinkley & Ken Walker Museums Victoria



Australia: Victoria, Eltham, C. Oke
Pronotum - female: Simon Hinkley & Ken Walker Museums Victoria



Australia: Victoria, Eltham, C. Oke
Thorax side - female: Simon Hinkley & Ken Walker Museums Victoria



Papa Ovalie, 21 November 1984, R. Muuoz.
Det M. Elgueta, 1993
Ventral Image: Sarah McCaffrey Museums Victoria

Results Generated:

Friday, January 21, 2022
