

# 1. PaDIL Species Factsheet



## Scientific Name:

*Phloeotribus scarabaeoides* (Bernard)

(Coleoptera: Curculionidae: Scolytinae: Hylesinini)

## Common Name

Olive bark beetle

Live link: <http://www.padil.gov.au/pests-and-diseases/Pest/Main/135930>

## Image Library

Australian Biosecurity

Live link: <http://www.padil.gov.au/pests-and-diseases/>

## Partners for Australian Biosecurity image library



Australian Government  
Department of Agriculture,  
Water and the Environment

Department of Agriculture, Water and the Environment

<https://www.awe.gov.au/>



Department of  
Primary Industries and  
Regional Development

Department of Primary Industries and Regional Development,

Western Australia

<https://dpird.wa.gov.au/>



Plant Health Australia

<https://www.planthealthaustralia.com.au/>



Museums Victoria

<https://museumsvictoria.com.au/>

## 2. Species Information

### 2.1. Details

**Specimen Contact:** AQIS - Brisbane -

**Author:** Walker, K.

**Citation:** Walker, K. (2007) Olive bark beetle (*Phloeotribus scarabaeoides*) Updated on 10/8/2021 Available online: PaDIL - <http://www.padil.gov.au>

**Image Use:** Free for use under the Creative Commons Attribution-NonCommercial 4.0 International (CC BY-NC 4.0)

### 2.2. URL

Live link: <http://www.padil.gov.au/pests-and-diseases/Pest/Main/135930>

### 2.3. Facets

**Status:** Exotic species - absent from Australia

**Group:** Beetles

**Commodity Overview:** Horticulture, Forestry

**Commodity Type:** Timber, Fresh Stems, Ornamentals

**Distribution:** Central and South America, Europe and Northern Asia, Africa

**Antennal Club shape:** Pseudolamellate, Funicle 5-segmented antennal

**Antennal Club sutures:** Two sutures

**Body colour:** Variegated color aspect of light and dark colors

**Declivity armature:** Granulate, granules very small but never pointed

**Declivity shape:** Convex

**Distribution:** Africa, Australasia, Asia, Europe, North America, South America, Pacific

**Elytral anterior margin:** Curved, Crenulations present

**Eye anterior margin:** Entire

**Frons sculpture:** Frons sculpture not convergently aciculate

**Metepisternum:** Entirely visible

**Procoxae:** Contiguous

**Pronotum characters:** Pronotal disc covered with asperities, Pronotum covers head, Pronotum Wider than Long

**Scutellum characters:** Scutellum small and cone shaped

**Hosts:** Abies, Brosimum, Cedrela, Celtis, Clusia, Condalia, Condalis, Croton, Ficus, Morus, Picea, Podocarpus, Prunus, Pseudotsuga, Ptelea, Quercus, Serjania, Staphylea

### 2.4. Other Names

*Bostrichus oleae* Fabricius 1792

*Phloeotribus oleiphilus* Del Guercio 1925

### 2.5. Diagnostic Notes

Adult body length 2mm, body shape small and elliptical; body colour: head and pronotum black, anterior half of elytra black to dark red-brown, posterior half of elytra red-brown; head with antennae grossly flabellate; body covered with setae and scale-like setae as shown in images; anterior margin of elytra raised and scalloped, pronotum anterior half with raised ridges and toothed.

## 2.6. References

Beaver, R.A. (1973). Biological studies of Brazilian Scolytidae and Platypodidae (Coleoptera): III The tribe Hylesinini. *Journal of Natural History* 7: 601-613. Russo (1938). V. Contributo alla conoscenza dei Coleotteri scoltidii. Fleotribo: Phloeotribus scarabaeoides (Bern.) Fauv. *Boll. Lab. Ent. agr. Portici*. 2: 3-419.

## 2.7. Web Links

**Overview - taxonomy and biology:** <http://www.inra.fr/hyppz/RAVAGEUR/6phlsca.htm>

### 3. Diagnostic Images



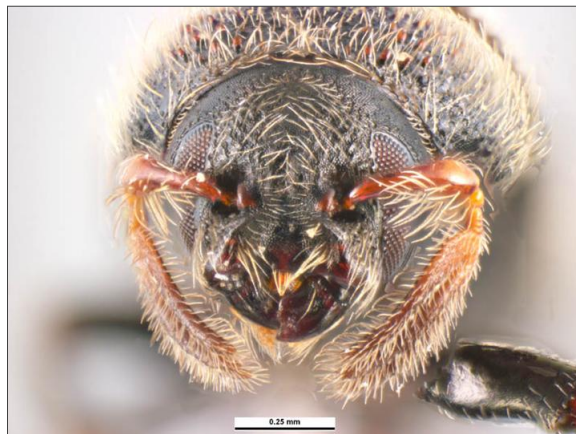
Europe: Italy, olive cuttings, 1999, Q-intercept - QA2498 det. G. Daniels  
**Antenna close up:** Simon Hinkley & Ken Walker Museums Victoria



Europe: Italy, olive cuttings, 1999, Q-intercept - QA2498 det. G. Daniels  
**Dorsal view:** Simon Hinkley & Ken Walker Museums Victoria



Europe: Italy, olive cuttings, 1999, Q-intercept - QA2498 det. G. Daniels  
**Elytra:** Simon Hinkley & Ken Walker Museums Victoria



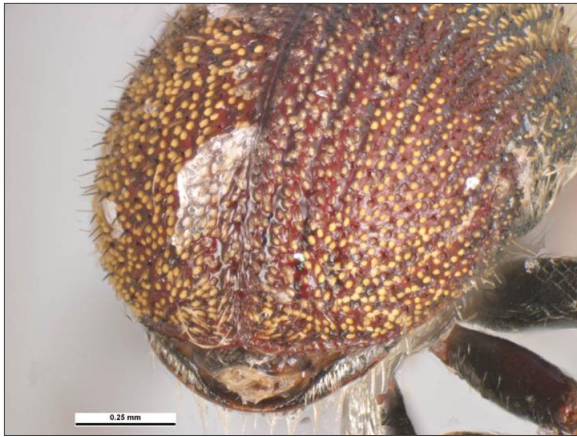
Europe: Italy, olive cuttings, 1999, Q-intercept - QA2498 det. G. Daniels  
**Head front:** Simon Hinkley & Ken Walker Museums Victoria



Europe: Italy, olive cuttings, 1999, Q-intercept - QA2498 det. G. Daniels  
**Head side:** Simon Hinkley & Ken Walker Museums Victoria



Europe: Italy, olive cuttings, 1999, Q-intercept - QA2498 det. G. Daniels  
**Lateral view:** Simon Hinkley & Ken Walker Museums Victoria



Europe: Italy, olive cuttings, 1999, Q-intercept - QA2498 det. G. Daniels  
**Posterior view:** Simon Hinkley & Ken Walker  
Museums Victoria



Europe: Italy, olive cuttings, 1999, Q-intercept - QA2498 det. G. Daniels  
**Pronotum:** Simon Hinkley & Ken Walker  
Museums Victoria

## 4. Other Images

Results Generated:

Sunday, August 14, 2022

---