

1. PaDIL Species Factsheet



Scientific Name:

Xylosandrus compactus (Eichhoff, 1875)

(Coleoptera: Curculionidae: Scolytinae: Xyleborini)

Common Name

black twig borer

Live link: <http://www.padil.gov.au/pests-and-diseases/Pest/Main/136017>

Image Library

Australian Biosecurity

Live link: <http://www.padil.gov.au/pests-and-diseases/>

Partners for Australian Biosecurity image library



Australian Government
Department of Agriculture,
Water and the Environment

Department of Agriculture, Water and the Environment

<https://www.awe.gov.au/>



Department of
Primary Industries and
Regional Development

Department of Primary Industries and Regional Development,

Western Australia

<https://dpird.wa.gov.au/>



Plant Health Australia

<https://www.planthealthaustralia.com.au/>



Museums Victoria

<https://museumsvictoria.com.au/>

2. Species Information

2.1. Details

Specimen Contact: QDPI&F Brisbane -

Author: Walker, K.

Citation: Walker, K. (2008) black twig borer(*Xylosandrus compactus*) Updated on 11/25/2011 Available online: PaDIL - <http://www.padil.gov.au>

Image Use: Free for use under the Creative Commons Attribution-NonCommercial 4.0 International (CC BY-NC 4.0)

2.2. URL

Live link: <http://www.padil.gov.au/pests-and-diseases/Pest/Main/136017>

2.3. Facets

Status: Exotic species - absent from Australia

Group: Beetles

Commodity Overview: Horticulture, Forestry

Commodity Type: Timber, Fresh Stems, Ornamentals, Citrus, Berries

Distribution: USA and Canada, Central and South America, Europe and Northern Asia, Africa, South and South-East Asia, Australasian - Oceanian

2.4. Other Names

ambrosia beetle

Xylosandrus morstatti (Hagedorn, 1912)

2.5. Diagnostic Notes

Adult female body length 1.4-1.7 mm, width 0.7 to 0.8 mm; body stout, cylindrical, elongate, brown to black; transversely oriented hair tuft at base of pronotum; and long strial setae; declivital striae with punctures clearly impressed, in rows, declivital surface shining; elytra almost evenly arched from middle of disc to apex; setae on pronotal disc more generally distributed, slightly more abundant on a transverse row in median area at base; posterior portion of pronotum shining and punctate. The surface of the declivity is:

- in *X. compactus* is shining and smooth
- in *X. crassiusculus* it is dull and granulate
- in *X. germanus* it is shining.

Xylosandrus compactus is smallest (1.4-1.7mm) with strial setae on declivity present.

Xylosandrus germanus (2.0-2.3mm) which has the strial setae on declivity entirely obsolete.

Xylosandrus crassiusculus is 2.1-2.9mm.

Xylosandrus mutilatus is largest about 3.5mm

Source:

See weblinks ISSG and Featured Creatures and HISL - PEET Xyleborini

2.6. Web Links

CabAbstracts:

<http://www.cababstractsplus.org/DMPP/Reviews.asp?action=display&openMenu=relatedItems&ReviewID=15400&Year=1997>

Featured Creatures: http://creatures.ifas.ufl.edu/trees/black_twig_borer.htm

Forestry Images: <http://www.forestryimages.org/browse/subthumb.cfm?sub=426&Start=1&display=60&sort=2>

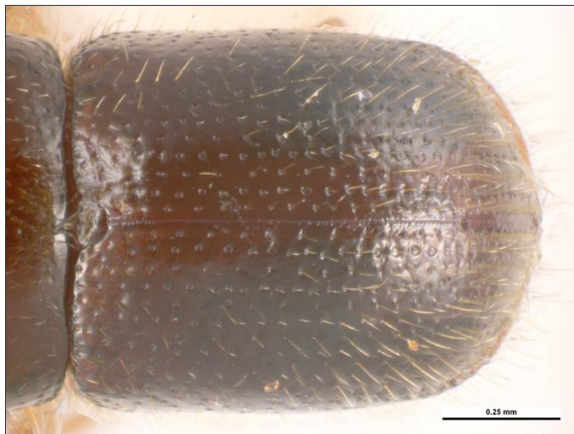
HISL - PEET Xyleborini: http://xyleborini.tamu.edu/query.php?tax_id=1698

ISSG: <http://www.issg.org/database/species/ecology.asp?si=175&fr=1&sts=>

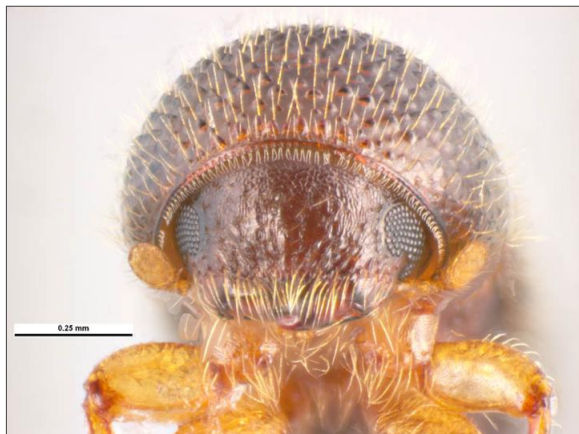
3. Diagnostic Images



Western Samoa, ACIAR Pacific Forest Health, Asau Nursery, R. Basford ex mahogany seedlings det. Dr Judy King 2007
Dorsal view: Ken Walker Museums Victoria



Western Samoa, ACIAR Pacific Forest Health, Asau Nursery, R. Basford ex mahogany seedlings det. Dr Judy King 2007
Elytra: Ken Walker Museums Victoria



Western Samoa, ACIAR Pacific Forest Health, Asau Nursery, R. Basford ex mahogany seedlings det. Dr Judy King 2007
Head front: Ken Walker Museums Victoria



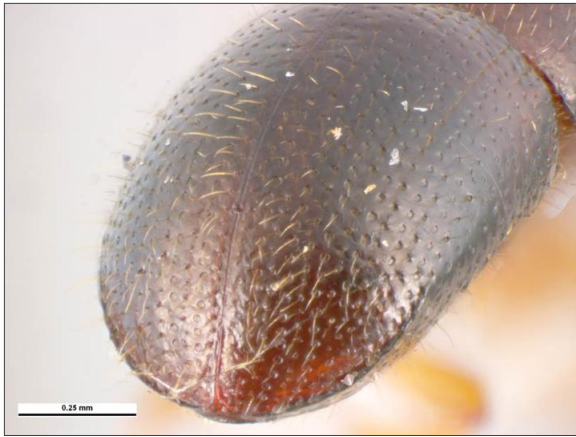
Western Samoa, ACIAR Pacific Forest Health, Asau Nursery, R. Basford ex mahogany seedlings det. Dr Judy King 2007
Head side: Ken Walker Museums Victoria



Western Samoa, ACIAR Pacific Forest Health, Asau Nursery, R. Basford ex mahogany seedlings det. Dr Judy King 2007
Hind leg tibia: Ken Walker Museums Victoria



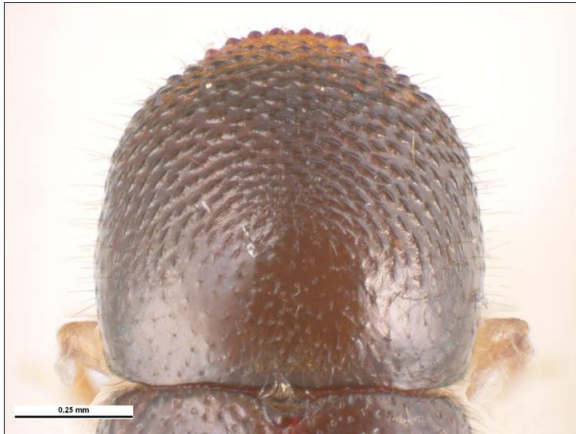
Western Samoa, ACIAR Pacific Forest Health, Asau Nursery, R. Basford ex mahogany seedlings det. Dr Judy King 2007
Lateral view: Ken Walker Museums Victoria



Western Samoa, ACIAR Pacific Forest Health, Asau Nursery, R. Basford ex mahogany seedlings det. Dr Judy King 2007
Posterior view: Ken Walker Museums Victoria



Western Samoa, ACIAR Pacific Forest Health, Asau Nursery, R. Basford ex mahogany seedlings det. Dr Judy King 2007
Pro-coxae separated: Ken Walker Museums Victoria



Western Samoa, ACIAR Pacific Forest Health, Asau Nursery, R. Basford ex mahogany seedlings det. Dr Judy King 2007
Pronotum: Ken Walker Museums Victoria



Western Samoa, ACIAR Pacific Forest Health, Asau Nursery, R. Basford ex mahogany seedlings det. Dr Judy King 2007
Thorax side: Ken Walker Museums Victoria

Results Generated:

Sunday, May 9, 2021

