

1. PaDIL Species Factsheet



Scientific Name:

Aleurotrachelus trachoides (Back)

(Hemiptera: Aleyrodidae: Aleyrodinae)

Common Name

Aleurotrachelus whitefly

Live link: <http://www.padil.gov.au/pests-and-diseases/Pest/Main/136164>

Image Library

Australian Biosecurity

Live link: <http://www.padil.gov.au/pests-and-diseases/>

Partners for Australian Biosecurity image library



Australian Government
Department of Agriculture,
Water and the Environment

Department of Agriculture, Water and the Environment

<https://www.awe.gov.au/>



Department of
Primary Industries and
Regional Development

Department of Primary Industries and Regional Development,

Western Australia

<https://dpir.wa.gov.au/>



Plant Health Australia

<https://www.planthealthaustralia.com.au/>



Museums Victoria

<https://museums.victoria.com.au/>

2. Species Information

2.1. Details

Specimen Contact: Natural History Museum of London (BMNH) -

Author: Walker, K.

Citation: Walker, K. (2008) *Aleurotrachelus whitefly* (*Aleurotrachelus trachoides*) Updated on 12/9/2020

Available online: PaDIL - <http://www.padil.gov.au>

Image Use: Free for use under the Creative Commons Attribution-NonCommercial 4.0 International (CC BY-NC 4.0)

2.2. URL

Live link: <http://www.padil.gov.au/pests-and-diseases/Pest/Main/136164>

2.3. Facets

Status: Exotic species - absent from Australia

Group: Bugs

Commodity Overview: Horticulture

Commodity Type: Fresh Vegetables, Ornamentals, Leaves

Distribution: Central and South America, Africa, Australasian - Oceanian

2.4. Diagnostic Notes

The genus is characterised by submargin with a row of small, toothlike conical processes.

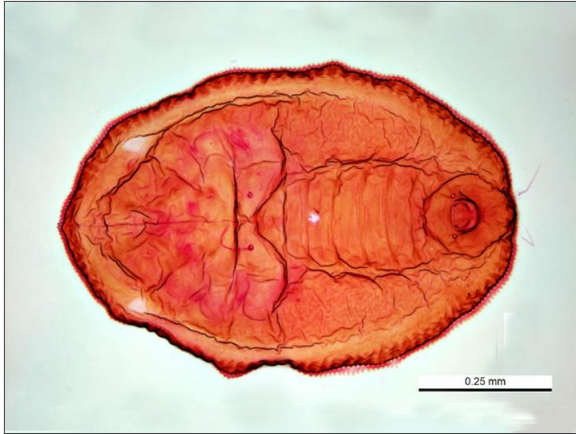
2.5. References

Wosula EN, Evans GA, Issa KA, Legg LP (2018). Two new invasive whiteflies (Hemiptera: Aleyrodidae) to Tanzania. *African Entomology* 26(1), 259-264.

2.6. Web Links

Lucid Whitefly Hosts : http://www.lucidcentral.org/keys/v3/whitefly/Aleyrodidae/Media/Html/Pests_Hosts.htm

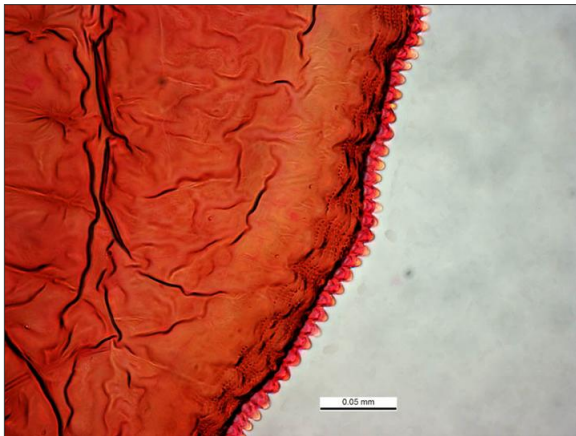
3. Diagnostic Images



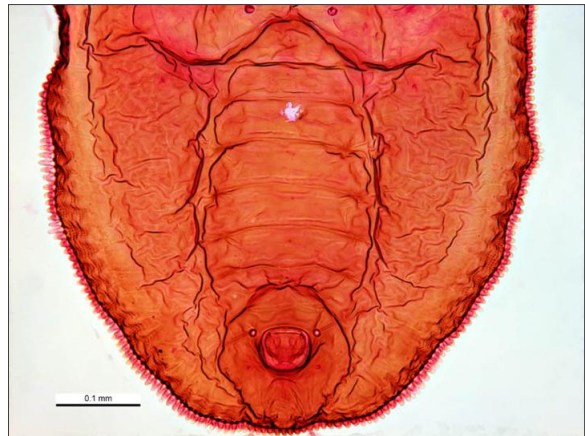
USA. Florida: Dade County south Miami, May 2004, J. Martin 7930, ex *Solanum* sp. cf. *S. nigrum*. Det. Jon Martin
Dorsal horizontal view: Ken Walker Museums Victoria



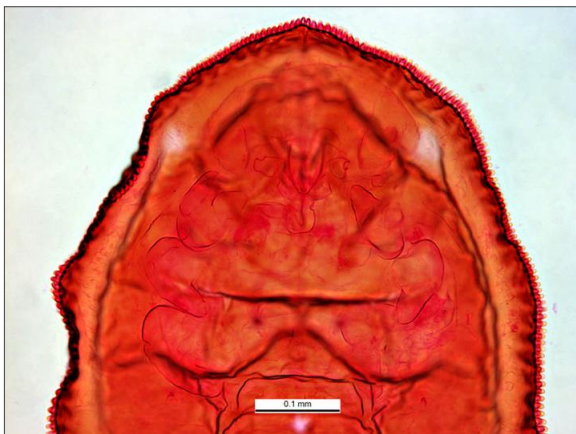
USA. Florida: Dade County south Miami, May 2004, J. Martin 7930, ex *Solanum* sp. cf. *S. nigrum*. Det. Jon Martin
Dorsal vertical view: Ken Walker Museums Victoria



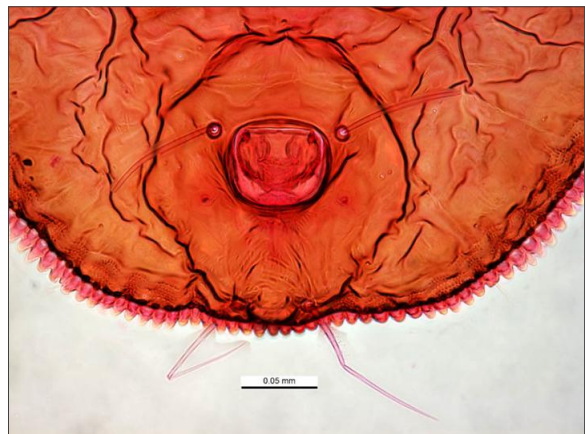
USA. Florida: Dade County south Miami, May 2004, J. Martin 7930, ex *Solanum* sp. cf. *S. nigrum*. Det. Jon Martin
Marginal crenulations: Ken Walker Museums Victoria



USA. Florida: Dade County south Miami, May 2004, J. Martin 7930, ex *Solanum* sp. cf. *S. nigrum*. Det. Jon Martin
Rhachis: Ken Walker Museums Victoria



USA. Florida: Dade County south Miami, May 2004, J. Martin 7930, ex *Solanum* sp. cf. *S. nigrum*. Det. Jon Martin
Tracheal notch and tracheal comb absent: Ken Walker Museums Victoria



USA. Florida: Dade County south Miami, May 2004, J. Martin 7930, ex *Solanum* sp. cf. *S. nigrum*. Det. Jon Martin
Vasiform orifice: Ken Walker Museums Victoria

4. Other Images

Results Generated:

Sunday, May 9, 2021
