

# 1. PaDIL Species Factsheet



## Scientific Name:

*Diatraea saccharalis* (Fabricius)

(Lepidoptera: Pyralidae: Crambinae)

## Common Name

Sugarcane Borer

Live link: <http://www.padil.gov.au/pests-and-diseases/Pest/Main/136271>

## Image Library

Australian Biosecurity

Live link: <http://www.padil.gov.au/pests-and-diseases/>

## Partners for Australian Biosecurity image library



Australian Government  
Department of Agriculture,  
Water and the Environment

Department of Agriculture, Water and the Environment

<https://www.awe.gov.au/>



Department of  
Primary Industries and  
Regional Development

Department of Primary Industries and Regional Development,

Western Australia

<https://dpiird.wa.gov.au/>



Plant Health Australia

<https://www.planthealthaustralia.com.au/>



Museums Victoria

<https://museumsvictoria.com.au/>

## 2. Species Information

### 2.1. Details

**Specimen Contact:** Department of Agriculture Western Australia -

**Author:** Graham, R.

**Citation:** Graham, R. (2005) Sugarcane Borer(*Diatraea saccharalis*) Updated on 2/13/2012 Available online: PaDIL - <http://www.padil.gov.au>

**Image Use:** Free for use under the Creative Commons Attribution-NonCommercial 4.0 International (CC BY-NC 4.0)

### 2.2. URL

Live link: <http://www.padil.gov.au/pests-and-diseases/Pest/Main/136271>

### 2.3. Facets

**Status:** Exotic species - absent from Australia

**Group:** Moths

**Commodity Overview:** Field Crops and Pastures

**Commodity Type:** Grains, Grasses, Sugarcane, Rice

**Distribution:** USA and Canada, Central and South America

### 2.4. Other Names

*Chilo obliteratellus* Zeller

*Crambus leucaniellus* Walker

*Crambus lineosellus* Walker

*Crambus sacchari* Fabricius

*Diatraea continens* Dyar

*Diatraea crambidoides* Holloway & Loftin

*Diatraea incomparella* Dyar & Heinrich

*Diatraea obliteratella*

*Diatraea obliteratellus* Zeller

*Diatraea pedidocla* Dyar

*Diatraea saccharalis va grenadensis* Dyar

*Diatraea sacchari* Walker

*Diatraea sacchari f. brasiliensis* Van Gorkum & De Waal

*Phalaena saccharalis* Fabricius

*Sugarcane Moth Borer*

*Sugarcane Stalk Borer*

### 2.5. Diagnostic Notes

INCURSION MANAGEMENT PLANS from BSES

Chilo incursion management plan  
Diatraea incursion management plan  
Eldana incursion management plan  
Eoreuma loftini incursion management plan  
Generic incursion management plan  
Scirpophaga incursion management plan  
Sesamia incursion management plan  
Sugarcane Smut - A contingency plan for the Australian sugar industry

The adult is a yellowish or yellowish brown moth with a wing span that measures 18 to 28 mm in males and 27 to 39 mm in females. The forewing also bears numerous narrow brown lines extending the length of the wing. The hind wing of females is white, but in males it is darker.

[http://creatures.ifas.ufl.edu/field/sugarcane\\_borer.htm](http://creatures.ifas.ufl.edu/field/sugarcane_borer.htm)

Larvae bore into the corn and sugarcane stalks, resulting in reduced yields. Adults are nocturnal.

## 2.6. References

Dekle GW. 1976. Illustrated key to caterpillars on corn. Florida Department of Agriculture and Consumer Services Division of Plant Industry Bulletin 4. 16 pp. Dyar HG, Heinrich C. 1927. The American moths of the genus *Diatraea* and allies. Proceedings of the U.S. Natural Museum 71:1-48. Long WH, Hensley SD. 1972. Insect pests of sugar cane. Annual Review of Entomology 17:149- 176. Roe RM. 1981. A bibliography of the sugarcane borer, *Diatraea saccharalis* (Fabricius), 1887- 1980. USDA, ARS. ARM-S 20. 101 pp.

## 2.7. Web Links

**Life Cycle and Description:** [http://creatures.ifas.ufl.edu/field/sugarcane\\_borer.htm](http://creatures.ifas.ufl.edu/field/sugarcane_borer.htm)

### 3. Diagnostic Images



**Dorsal View - Female:** Rebecca Graham  
Department of Agriculture Western Australia



**Dorsal View - Male:** Rebecca Graham  
Department of Agriculture Western Australia



**Head Dorsal View:** Willow Warren  
Department of Agriculture Western Australia



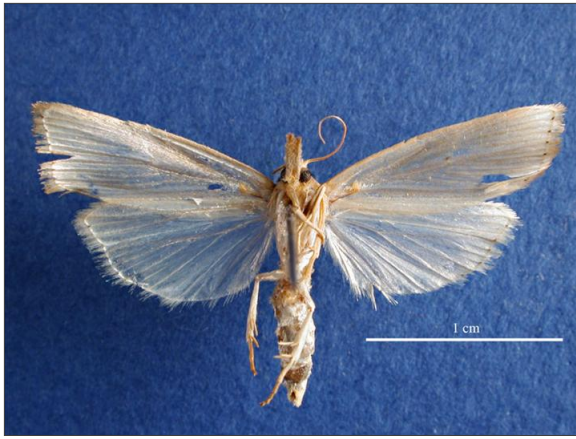
**Head Front View:** Willow Warren  
Department of Agriculture Western Australia



**Head Side View:** Willow Warren  
Department of Agriculture Western Australia



**Head Side View:** Willow Warren  
Department of Agriculture Western Australia



**Ventral View - Female:** Rebecca Graham  
Department of Agriculture Western Australia



**Ventral View - Male:** Rebecca Graham  
Department of Agriculture Western Australia

## Results Generated:

Monday, November 30, 2020

---