

1. PaDIL Species Factsheet



Scientific Name:

Lymantria dispar dispar race *Europe* (Linnaeus)
(Lepidoptera: Lymantriidae)

Common Name

European gypsy moth

Live link: <http://www.padil.gov.au/pests-and-diseases/Pest/Main/136283>

Image Library

Australian Biosecurity

Live link: <http://www.padil.gov.au/pests-and-diseases/>

Partners for Australian Biosecurity image library



Australian Government
Department of Agriculture,
Water and the Environment

Department of Agriculture, Water and the Environment
<https://www.awe.gov.au/>



Department of
Primary Industries and
Regional Development

Department of Primary Industries and Regional Development,
Western Australia
<https://dpiird.wa.gov.au/>



Plant Health Australia
<https://www.planthealthaustralia.com.au/>



Museums Victoria
<https://museumsvictoria.com.au/>

2. Species Information

2.1. Details

Specimen Contact: Museum Victoria - discoverycentre@museum.vic.gov.au

Author: Walker, K.

Citation: Walker, K. (2005) European gypsy moth (*Lymantria dispar dispar* race *Europe*) Updated on 10/21/2011 Available online: PaDIL - <http://www.padil.gov.au>

Image Use: Free for use under the Creative Commons Attribution-NonCommercial 4.0 International (CC BY-NC 4.0)

2.2. URL

Live link: <http://www.padil.gov.au/pests-and-diseases/Pest/Main/136283>

2.3. Facets

Status: Exotic Regulated Pest - absent from Australia

Group: Moths

Commodity Overview: Forestry

Commodity Type: Timber

Distribution: USA and Canada, Europe and Northern Asia

2.4. Other Names

Phalaena dispar Linnaeus

2.5. Diagnostic Notes

There are several subspecies and races of Gypsy Moth.

There are:

- The Asian gypsy moth *Lymantria dispar dispar* race asian
- The European gypsy moth *Lymantria dispar dispar* race Europe
- and *Lymantria dispar japonica* the Japanese gypsy moth.

The image shown here are of *Lymantria dispar dispar* the European gypsy moth.

See reference for Schintlmeister 2004

Male Gypsy moths are brown with a darker brown pattern on their wings. Females are slightly larger and nearly white, with a few dark markings on their wings. Newly hatched caterpillars are black and hairy, later developing a mottled yellow to gray pattern with tufts of bristle like hairs and two rows of blue then red spots on their back.

Adult females from Asian strains (west of the Ural mtns.) of Gypsy moth are capable of flight but European strains are incapable of flight. North American populations originated from Europe. Larvae of Asian strains also tend to grow larger. Because of these differences, eradication is usually directed to be more aggressive during incursions of the Asian strain.

Source:

See weblink for: Global Invasive Species Database

2.6. References

Schintlmeister. A.(2004). The taxonomy of the genus *Lymantria* Hübner, (1819) Lepidoptera: Lymantriidae). *Quadriana* 7: 1-248.

2.7. Web Links

Adult and immature images: <http://www.leps.it/indexjs.htm?SpeciesPages/LymanDispar.htm>

DAFF Archive images: <http://www.forestryimages.org/browse/autimages.cfm?aut=24905>

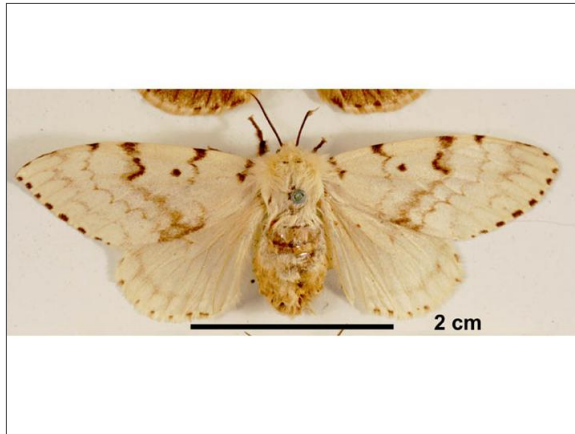
Taxonomy and distribution:

<http://www.funet.fi/pub/sci/bio/life/insecta/lepidoptera/ditrysia/noctuoidea/lymantriidae/lymantria/>

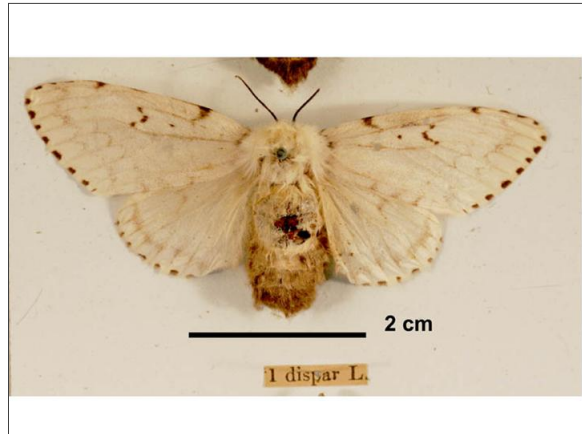
PBT link: <http://www.padil.gov.au/pbt/index.php?q=node/46&pbtID=115>

Global Invasive Species Database: <http://www.issg.org/database/species/ecology.asp?si=96&fr=1&sts>

3. Diagnostic Images



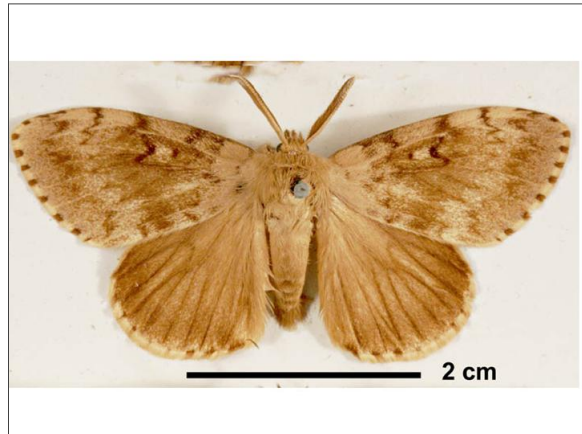
Germany - John Curtis Collection
Dorsal view female: Simon Hinkley & Ken Walker Museums Victoria



Germany - John Curtis Collection
Dorsal view female: Peter Lillywhite Museums Victoria

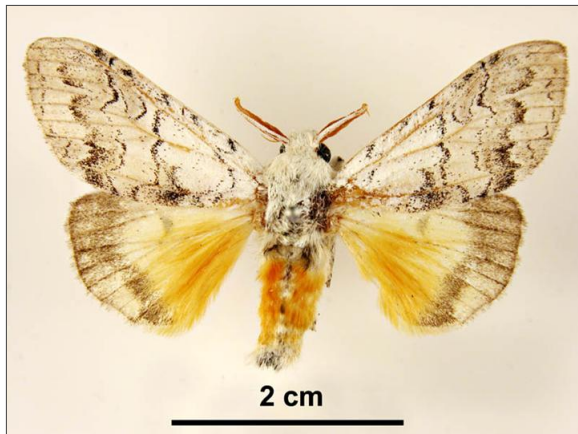


Germany - John Curtis Collection
Dorsal view male: Peter Lillywhite Museums Victoria



Germany - John Curtis Collection
Dorsal view male: Peter Lillywhite Museums Victoria

4. Other Images



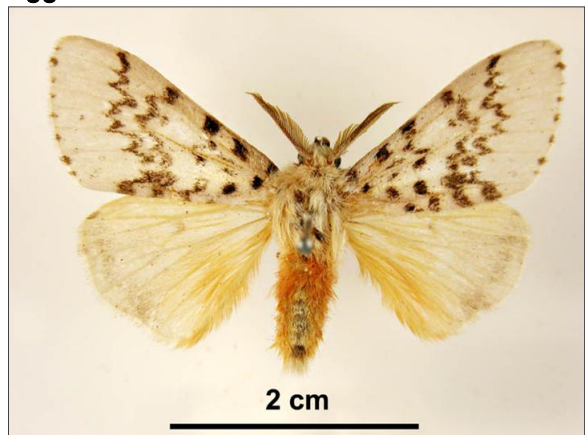
Qld Yeppoon, Sept 1984, D. Holmes
Calliteara farenoides: Peter Lillywhite
Museums Victoria



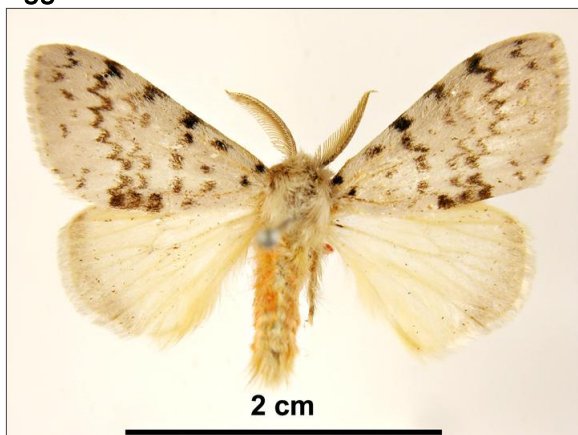
Sourced from SAG collection in Santiago,
Chile
Egg case: Ken Walker Museums Victoria



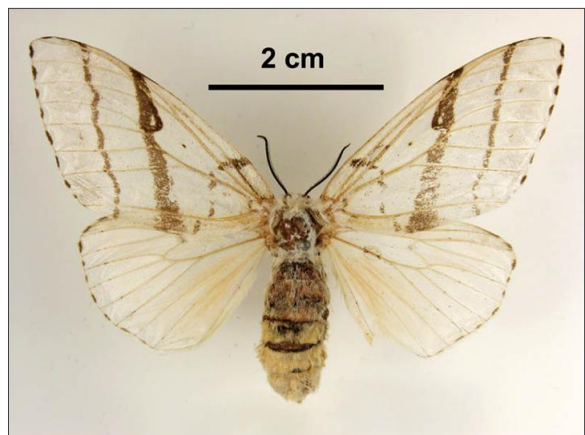
Sourced from SAG collection in Santiago,
Chile
Egg case: Ken Walker Museums Victoria



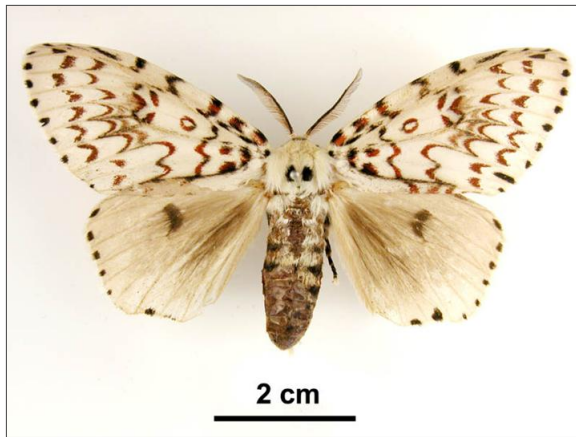
Qld Yeppoon, Oct 1980, D. Holmes
Lymantria antennata female: Peter Lillywhite
Museums Victoria



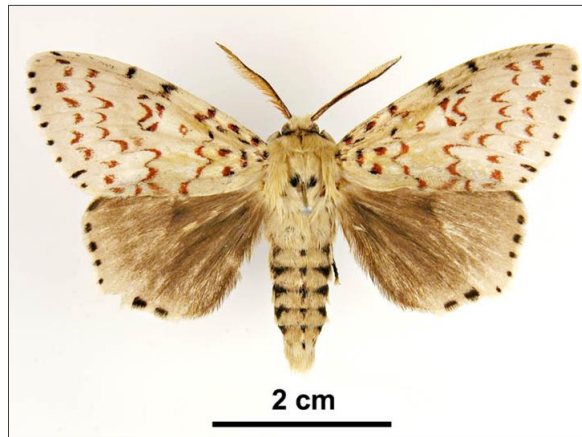
Qld Cairns Aug 1986, D. Holmes
Lymantria antennata male: Peter Lillywhite
Museums Victoria



Unlabelled
Lymantria lunata female: Peter Lillywhite
Museums Victoria



Qld Mt Glorious, March 1975, G. Miller
Lymantria nephrographa female: Peter
Lillywhite Museums Victoria



Qld Mt Glorious, October 1975, G. Miller
Lymantria nephrographa male: Peter
Lillywhite Museums Victoria

Results Generated:

Tuesday, October 19, 2021
