

1. PaDIL Species Factsheet



Scientific Name:

Phyllotreta variipennis (Boieldieu, 1859)

(Coleoptera: Chrysomelidae: Galerucinae: Alticini)

Common Name

Flea beetle

Live link: <http://www.padil.gov.au/pests-and-diseases/Pest/Main/142821>

Image Library

Australian Biosecurity

Live link: <http://www.padil.gov.au/pests-and-diseases/>

Partners for Australian Biosecurity image library



Australian Government
Department of Agriculture,
Water and the Environment

Department of Agriculture, Water and the Environment

<https://www.awe.gov.au/>



Department of
Primary Industries and
Regional Development

Department of Primary Industries and Regional Development,

Western Australia

<https://dpir.wa.gov.au/>



Plant Health Australia

<https://www.planthealthaustralia.com.au/>



Museums Victoria

<https://museums.victoria.com.au/>

2. Species Information

2.1. Details

Specimen Contact: Museum Victoria - discoverycentre@museum.vic.gov.au

Author: McLellan, Clare

Citation: McLellan, Clare (2012) Flea beetle (*Phyllotreta variipennis*) Updated on 11/8/2012 Available online: PaDIL - <http://www.padil.gov.au>

Image Use: Free for use under the Creative Commons Attribution-NonCommercial 4.0 International (CC BY-NC 4.0)

2.2. URL

Live link: <http://www.padil.gov.au/pests-and-diseases/Pest/Main/142821>

2.3. Facets

Commodity Overview: General

Commodity Type: General, Leaves

Distribution: Europe and Northern Asia

Group: Beetles

Status: Exotic species - absent from Australia

3. Diagnostic Images



Quarantine intercept Melbourne, Australia.
Kiwifruit, Italy 20 March 2009 Det. C. Reid
31 March 2010
Antenna Image - Male: Clare McLellan
Museums Victoria



Quarantine intercept Melbourne, Australia.
Kiwifruit, Italy 20 March 2009 Det. C. Reid
31 March 2010
Dorsal Image - Male: Clare McLellan
Museums Victoria



Quarantine intercept Melbourne, Australia.
Kiwifruit, Italy 20 March 2009 Det. C. Reid
31 March 2010
Elytra Image - Male: Clare McLellan
Museums Victoria



Quarantine intercept Melbourne, Australia.
Kiwifruit, Italy 20 March 2009 Det. C. Reid
31 March 2010
Head Front Image - Male: Clare McLellan
Museums Victoria



Quarantine intercept Melbourne, Australia.
Kiwifruit, Italy 20 March 2009 Det. C. Reid
31 March 2010
Head Side Image - Male: Clare McLellan
Museums Victoria

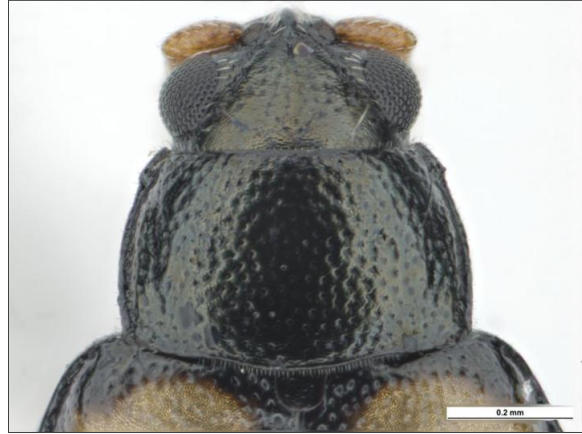


Quarantine intercept Melbourne, Australia.
Kiwifruit, Italy 20 March 2009 Det. C. Reid
31 March 2010
Lateral Image - Male: Clare McLellan
Museums Victoria



Quarantine intercept Melbourne, Australia.
Kiwifruit, Italy 20 March 2009 Det. C. Reid
31 March 2010

Posterior Image - Male: Clare McLellan
Museums Victoria



Quarantine intercept Melbourne, Australia.
Kiwifruit, Italy 20 March 2009 Det. C. Reid
31 March 2010

Pronotum Image - Male: Clare McLellan
Museums Victoria



Quarantine intercept Melbourne, Australia.
Kiwifruit, Italy 20 March 2009 Det. C. Reid
31 March 2010

Thorax Side Image - Male: Clare McLellan
Museums Victoria



Quarantine intercept Melbourne, Australia.
Kiwifruit, Italy 20 March 2009 Det. C. Reid
31 March 2010

Ventral Image - Male: Clare McLellan
Museums Victoria

Results Generated:

Friday, October 30, 2020