

# 1. PaDIL Species Factsheet



## Scientific Name:

*Gymnetron pascuorum* (Gyllenhal, 1813)

(Coleoptera: Curculionoidea : Curculionidae)

## Common Name

Weevil

Live link: <http://www.padil.gov.au/pests-and-diseases/Pest/Main/142827>

## Image Library

Australian Biosecurity

Live link: <http://www.padil.gov.au/pests-and-diseases/>

## Partners for Australian Biosecurity image library



Australian Government  
Department of Agriculture,  
Water and the Environment

Department of Agriculture, Water and the Environment

<https://www.awe.gov.au/>



Department of  
Primary Industries and  
Regional Development

Department of Primary Industries and Regional Development,

Western Australia

<https://dpiird.wa.gov.au/>



Plant Health Australia

<https://www.planthealthaustralia.com.au/>



Museums Victoria

<https://museumsvictoria.com.au/>

## 2. Species Information

### 2.1. Details

**Specimen Contact:** Museum Victoria - [discoverycentre@museum.vic.gov.au](mailto:discoverycentre@museum.vic.gov.au)

**Author:** McLellan, Clare

**Citation:** McLellan, Clare (2012) Weevil (*Gymnetron pascuorum*) Updated on 11/14/2012 Available online: PaDIL - <http://www.padil.gov.au>

**Image Use:** Free for use under the Creative Commons Attribution-NonCommercial 4.0 International (CC BY-NC 4.0)

### 2.2. URL

Live link: <http://www.padil.gov.au/pests-and-diseases/Pest/Main/142827>

### 2.3. Facets

**Commodity Overview:** General, Horticulture

**Commodity Type:** Fresh Roots, Fresh Stems, General, Leaves

**Distribution:** Europe and Northern Asia, Australasian - Oceanian

**Group:** Beetles

**Status:** Exotic species - absent from Australia

### 2.4. Other Names

*Gymnetron pascuorum* Schoenherr, 1825

*Mecinus pascuorum* Gyllenhal, 1813

### 3. Diagnostic Images



Quarantine intercept Melbourne, Australia.  
Kiwifruit, New Zealand 31 May 2010 Det. R.  
Oberprieler 1 June 2010  
**Antenna Image:** Clare McLellan Museums  
Victoria



Quarantine intercept Melbourne, Australia.  
Kiwifruit, New Zealand 31 May 2010 Det. R.  
Oberprieler 1 June 2010  
**Dorsal Image:** Clare McLellan Museums  
Victoria



Quarantine intercept Melbourne, Australia.  
Kiwifruit, New Zealand 31 May 2010 Det. R.  
Oberprieler 1 June 2010  
**Elytra Image:** Clare McLellan Museums  
Victoria



Quarantine intercept Melbourne, Australia.  
Kiwifruit, New Zealand 31 May 2010 Det. R.  
Oberprieler 1 June 2010  
**Head Front Image:** Clare McLellan  
Museums Victoria



Quarantine intercept Melbourne, Australia.  
Kiwifruit, New Zealand 31 May 2010 Det. R.  
Oberprieler 1 June 2010  
**Head Side Image:** Clare McLellan Museums  
Victoria

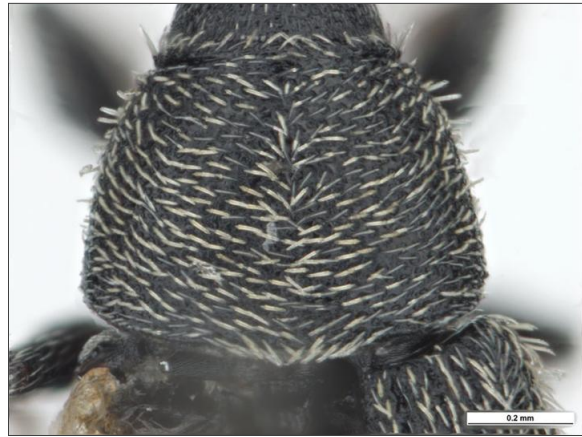


Quarantine intercept Melbourne, Australia.  
Kiwifruit, New Zealand 31 May 2010 Det. R.  
Oberprieler 1 June 2010  
**Lateral Image:** Clare McLellan Museums  
Victoria



Quarantine intercept Melbourne, Australia.  
Kiwifruit, New Zealand 31 May 2010 Det. R.  
Oberprieler 1 June 2010

**Posterior Image:** Clare McLellan Museums  
Victoria



Quarantine intercept Melbourne, Australia.  
Kiwifruit, New Zealand 31 May 2010 Det. R.  
Oberprieler 1 June 2010

**Pronotum Image:** Clare McLellan Museums  
Victoria



Quarantine intercept Melbourne, Australia.  
Kiwifruit, New Zealand 31 May 2010 Det. R.  
Oberprieler 1 June 2010

**Thorax Side Image:** Clare McLellan  
Museums Victoria



Quarantine intercept Melbourne, Australia.  
Kiwifruit, New Zealand 31 May 2010 Det. R.  
Oberprieler 1 June 2010

**Ventral Image:** Clare McLellan Museums  
Victoria

## Results Generated:

Friday, October 30, 2020