

1. PaDIL Species Factsheet



Scientific Name:

Lasioglossum (Chilalictus) appositum (Rayment, 1939)
(Hymenoptera: Halictidae: Halictinae: Halictini)

Common Name

Native appositum halictid

Live link: <http://www.padil.gov.au/pollinators/Pest/Main/138220>

Image Library

Australian Pollinators

Live link: <http://www.padil.gov.au/pollinators/>

Partners for Australian Pollinators image library



Western Australian Museum
<https://museum.wa.gov.au/>



South Australian Museum
<https://www.samuseum.sa.gov.au/>



Australian Museum
<https://australian.museum/>



Museums Victoria
<https://museumsvictoria.com.au/>

2. Species Information

2.1. Details

Specimen Contact: Museum Victoria - discoverycentre@museum.vic.gov.au

Author: Walker, K.

Citation: Walker, K. (2009) Native appositum halictid (*Lasioglossum (Chilalictus) appositum*) Updated on 10/1/2011 Available online: PaDIL - <http://www.padil.gov.au>

Image Use: Free for use under the Creative Commons Attribution-NonCommercial 4.0 International (CC BY-NC 4.0)

2.2. URL

Live link: <http://www.padil.gov.au/pollinators/Pest/Main/138220>

2.3. Facets

Status: Native Australian Beneficial Species

Host Genera: Fresh Flowers

Bio-Region: Australasian - Oceanian

Host Family: Anacardiaceae, Combretaceae, Fabaceae, Loranthaceae, Meliaceae, Myrtaceae, Orchidaceae, Proteaceae, Rutaceae, Sapindaceae, Xanthorrhoeaceae

Body length / colours: Both sexes mesoscutum metallic, Female metasoma red-brown except T1 dark, Body length small - equal to or less than 5mm - Female

Head Characters: Both sexes frons not elongated - OAD less than 30% of HW, Male clypeus yellow, Female frons sculpture striate, Female head shape oval, Male macrocephalic head, Male flagellum length less than head width, Male frons sparsely hirsute to level of median ocellus

Visitation Host Families: Anacardiaceae, Combretaceae, Fabaceae, Loranthaceae, Meliaceae, Myrtaceae, Orchidaceae, Proteaceae, Rutaceae, Sapindaceae, Xanthorrhoeaceae

Female Labrum: Distal process triangular shaped, Distal process with well developed lateral keels, Basal box forming raised inverted V-shaped process on basal box median area, Distal process lateral teeth absent

Leg Characters: Hind basitibial plate rounded, Female fore tibial spur fan shaped, Inner hind tibial spur with one tooth

Male Genitalia: Retrorse well developed, S7 apically rounded

Mesosomal Characters: Female scutum surface shining, Female scutum vestiture sparse, Female scutum closely punctate mesially

Mesoventral Characters: Female mesoventral hair simple

Metasomal Characters: Female T1 punctate, Male S2- S5 vestiture sparse and without an obvious setal pattern

Propodeum Sculpture: Dorsal rim carinate in posterolateral corners only, Dorsal sculpture ruguloso-striolate

Forewing Venation: Male 2nd r-m weaker than 1st r-m

2.4. Other Names

Halictus erythrurus appositus Rayment, 1939

Homalictus appositus Michener, 1965

2.5. Diagnostic Notes

Halictus erythrurus appositus Rayment, T. 1939. Bees from the high lands of New South Wales and Victoria. Australian Zoologist 9: 263–294 [281].

Type data: Holotype ANIC ?, White Swamp, NSW.

Halictus erythrurus appositus Rayment, 1939: 281. *Homalictus appositus*. - Michener, 1965: 179. *Lasioglossum (Chilalictus) appositum*. - Walker, 1986: 167.

Full description

Diagnosis. Most like *L. veronicae* and *L. victoriae* but with dull mesoscutum surface. Female with head and mesoscutum metallic green, latter suffused with gold, metasoma red-brown except posterior half of T1 dark green, frons striate, mesoscutum shining, densely punctate along midline and laterad of parapsidal line, mesially and in parapsidal areas openly to closely punctate, dorsal surface of propodeum ruguloso-striolate, defined by posterolateral carinae set well below dorsal level, fore tibial spur fan-shaped, metasomal tomentum absent. Male with head metallic green/blue, mesoscutum dark green, metasoma dark brown, antennae moderately short (FL 1.08 x UID), AS4:AS2+3=1, sternal vestiture sparse, forewings with 2nd r-m weaker than 1st r-m.

Remarks. *Lasioglossum appositum* and *L. immaculatum* are the only metallic species with a predominantly northern distribution. *L. appositum* is the common *Lasioglossum* s.l. species collected throughout most of northern Queensland, including Cape York Peninsula. Several males displayed macrocephalic development.

2.6. References

Michener, C.D. 1965. A classification of the bees of the Australian and South Pacific regions. *Bulletin of the American Museum of Natural History* 130: 1–362 (as *Homalictus appositus* (Rayment, 1939), taxonomy) Walker, K.L. 1986. Revision of the Australian species of the genus *Homalictus* Cockerell (Hymenoptera: Halictidae). *Memoirs of the Museum of Victoria* 47: 105–200 [167]

2.7. Web Links

Full description PDF: http://researchdata.museum.vic.gov.au/padil/pdfs/L_appositum.pdf

AFD: [http://www.environment.gov.au/biodiversity/abrs/online-resources/fauna/afd/taxa/Lasioglossum_\(Chilalictus\)_appositum](http://www.environment.gov.au/biodiversity/abrs/online-resources/fauna/afd/taxa/Lasioglossum_(Chilalictus)_appositum)

3. Diagnostic Images



Qld. 12km NE of Bamaga, 7 Nov 1988, K. Walker

Dorsal view - female: Lucinda Gibson, Sarah McCaffrey and Ken Walker Museums Victoria



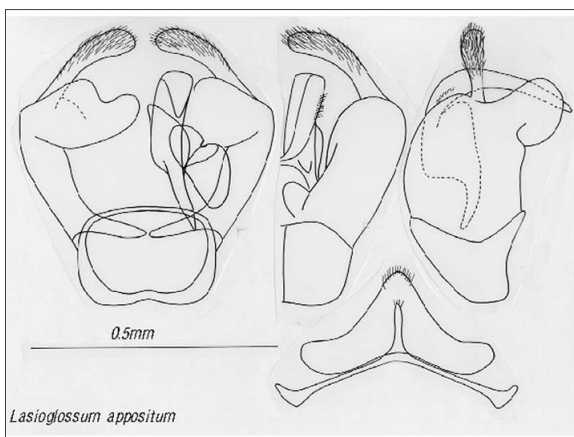
Qld. 12km NE of Bamaga, 7 Nov 1988, K. Walker

Dorsal view - male: Lucinda Gibson, Sarah McCaffrey and Ken Walker Museums Victoria



Qld. 12km NE of Bamaga, 7 Nov 1988, K. Walker

Gaster venter - male: Lucinda Gibson, Sarah McCaffrey and Ken Walker Museums Victoria



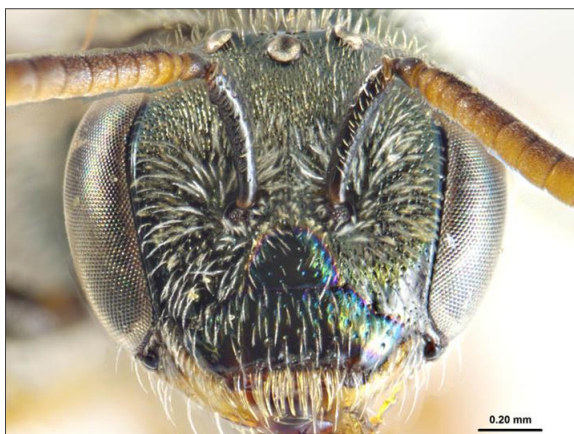
Qld 7mi W Charleville, 1 Nov 1971, E Exley

Genitalia - male: Ken Walker Museums Victoria



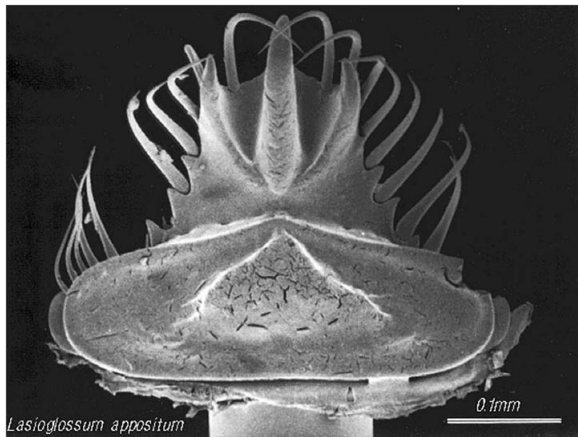
Qld. 12km NE of Bamaga, 7 Nov 1988, K. Walker

Head front - male: Lucinda Gibson, Sarah McCaffrey and Ken Walker Museums Victoria



Qld. 12km NE of Bamaga, 7 Nov 1988, K. Walker

Head front- female: Lucinda Gibson, Sarah McCaffrey and Ken Walker Museums Victoria



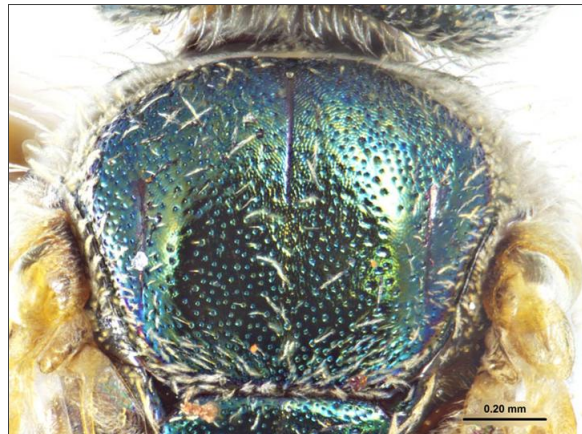
Qld 12km NE of Bamaga, 7 Nov 1988 K. Walker
Labrum: Ken Walker Museums Victoria



Qld. 12km NE of Bamaga, 7 Nov 1988, K. Walker
Lateral view - female: Lucinda Gibson, Sarah McCaffrey and Ken Walker Museums Victoria



Qld. 12km NE of Bamaga, 7 Nov 1988, K. Walker
Lateral view - male: Lucinda Gibson, Sarah McCaffrey and Ken Walker Museums Victoria



Qld. 12km NE of Bamaga, 7 Nov 1988, K. Walker
Mesoscutum: Lucinda Gibson, Sarah McCaffrey and Ken Walker Museums Victoria

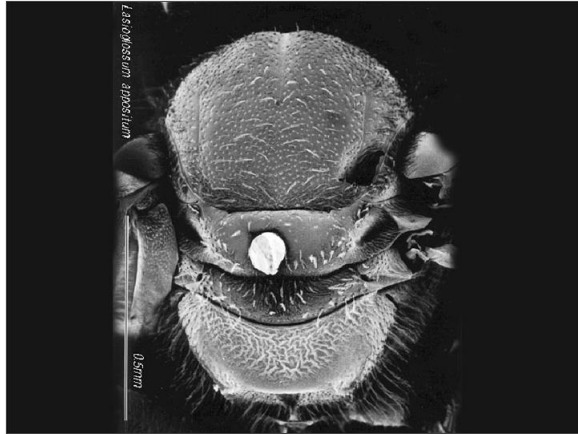


Qld. 12km NE of Bamaga, 7 Nov 1988, K. Walker
Metasoma female: Lucinda Gibson, Sarah McCaffrey and Ken Walker Museums Victoria

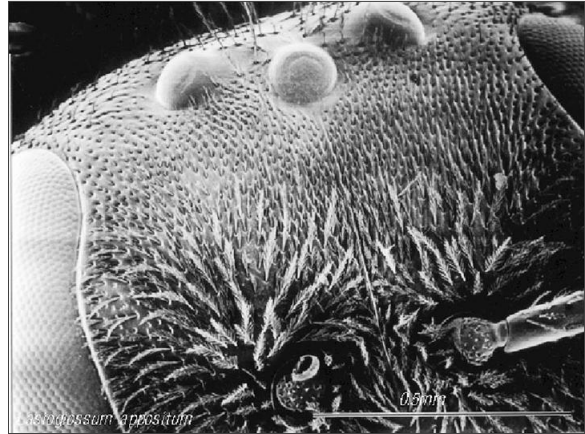


Qld. 12km NE of Bamaga, 7 Nov 1988, K. Walker
Propodeum - female: Lucinda Gibson, Sarah McCaffrey and Ken Walker Museums Victoria

4. Other Images



Qld. 12km NE of Bamaga, 7 Nov 1988, K. Walker
Dorsal view - female SEM: Ken Walker
Museums Victoria



Qld. 12km NE of Bamaga, 7 Nov 1988, K. Walker
Head front - female SEM: Ken Walker
Museums Victoria

Results Generated:

Wednesday, January 20, 2021
