

1. PaDIL Species Factsheet



Scientific Name:

Lasioglossum (Chilalictus) brazieri (Cockerell, 1916)
(Hymenoptera: Halictidae: Halictinae: Halictini)

Common Name

Native brazieri halictid

Live link: <http://www.padil.gov.au/pollinators/Pest/Main/138232>

Image Library

Australian Pollinators

Live link: <http://www.padil.gov.au/pollinators/>

Partners for Australian Pollinators image library



Western Australian Museum
<https://museum.wa.gov.au/>



South Australian Museum
<https://www.samuseum.sa.gov.au/>



Australian Museum
<https://australian.museum/>



Museums Victoria
<https://museumsvictoria.com.au/>

2. Species Information

2.1. Details

Specimen Contact: Museum Victoria - discoverycentre@museum.vic.gov.au

Author: Walker, K.

Citation: Walker, K. (2009) Native brazieri halictid (*Lasioglossum (Chilalictus) brazieri*) Updated on 10/1/2011

Available online: PaDIL - <http://www.padil.gov.au>

Image Use: Free for use under the Creative Commons Attribution-NonCommercial 4.0 International (CC BY-NC 4.0)

2.2. URL

Live link: <http://www.padil.gov.au/pollinators/Pest/Main/138232>

2.3. Facets

Status: Native Australian Beneficial Species

Host Genera: Fresh Flowers

Bio-Region: Australasian - Oceanian

Host Family: Asteraceae, Boraginaceae, Compositae, Fabaceae, Iridaceae, Liliaceae, Myrtaceae, Onagraceae, Ranunculaceae, Rosaceae, Rutaceae, Thymelaeaceae, Umbelliferae

Body length / colours: Both sexes mesoscutum non-metallic, Body length large - ie greater than 9mm - Female, Female mesoscutum and metasoma black, Female metasoma black, Body length medium - less than 9mm greater than 5mm - Female

Head Characters: Both sexes frons not elongated - OAD less than 30% of HW, Female frons sculpture reticulate, Male antennae short: flagellar segment 4 shorter than 2+3, Male clypeus yellow, Female head shape triangular, Male flagellum length greater than head width, Male frons sparsely hirsute to level of median ocellus

Visitation Host Families: Boraginaceae, Compositae, Epacridaceae, Fabaceae, Iridaceae, Myrtaceae, Onagraceae, Ranunculaceae, Rosaceae, Rutaceae, Thymelaeaceae, Umbelliferae

Female Labrum: Distal process median keel spatulate distally, Basal box smooth median area, Distal process lateral teeth hooked, Distal process semi-rectangular shaped, Distal process lateral keels weakly developed

Leg Characters: Hind basitibial plate rounded, Inner hind tibial spur with one tooth

Male Genitalia: Retrorse well developed, S7 apically rounded

Mesosomal Characters: Female scutum surface shining, Female scutum anterior margin with mesial projection, Female scutum vestiture sparse, Female pronotum with obtuse dorsolateral angles, Female scutum closely punctate mesially

Mesoventral Characters: Female mesoventral hair simple

Metasomal Characters: Female T1 punctate, Male S3- S4 with plumose hair bands, Male gastral venter with distinct hair pattern, Female metasoma with full and lateral tomentum across tergites

Propodeum Sculpture: Dorsal rim carinate in posterolateral corners only, Dorsal sculpture ruguloso-striolate, Dorsal sculpture striate, Dorsal rim sharply curved but not carinate, Vertical propodeal surface plicate

Forewing Venation: Male 2nd r-m as strong as 1st r-m

2.4. Diagnostic Notes

Lasioglossum (Chilalictus) brazieri (Cockerell, 1916) *Halictus brazieri* Cockerell, T.D.A. 1916. Some bees from Australia, Tasmania and the New Hebrides. Proceedings of the Academy of Natural Sciences of Philadelphia 68: 360–375 [367].

Type data: Holotype BMNH Hym.17.a.915 ? (described as ?), Yallingup, WA.

Synonyms

Halictus eboracensis Cockerell, T.D.A. 1918. Some bees collected in Queensland. *Memoirs of the Queensland Museum* 6: 112–120 [117].

Type data: Holotype BMNH Hym.17.a.957 ?, Ebor, NSW.

Halictus subetheridgei Rayment, T. 1953. *Bees of the Portland District. Victoria : Portland Field Naturalist's Club* 39 pp. [23].

Type data: Holotype ANIC ?, Gorae West, VIC. Paratype(s) ANIC 4?, Emerald, VIC (2 males), Gorae West, VIC (2 males).

Full description

Diagnosis. Most like *L. repraesentans*. Both sexes with body black. Female with frons coarsely reticulate, labrum median keel spatulate, lateral ridges weak; mesoscutum anterior margin with bilobed mesial projection, punctation moderately coarse, surface shining, dorsal surface of propodeum ruguloso-striolate, defined by posterolateral angular carinae, posterovertical surface plicate, dorsal rim raised, recessed mesially. Male with S3-S4 with dense long plumose hair across posterior margin, S5 with weak lateral tufts; forewings with 2nd r-m as strong as 1st r-m.

Remarks. Cockerell (1916b) gave the sex of the type of *Halictus brazieri* as male; however, examination of the specimen reveals that it is female.

2.5. Web Links

AFD: [http://www.environment.gov.au/biodiversity/abrs/online-resources/fauna/afd/taxa/Lasioglossum_\(Chilalictus\)_brazieri](http://www.environment.gov.au/biodiversity/abrs/online-resources/fauna/afd/taxa/Lasioglossum_(Chilalictus)_brazieri)

3. Diagnostic Images



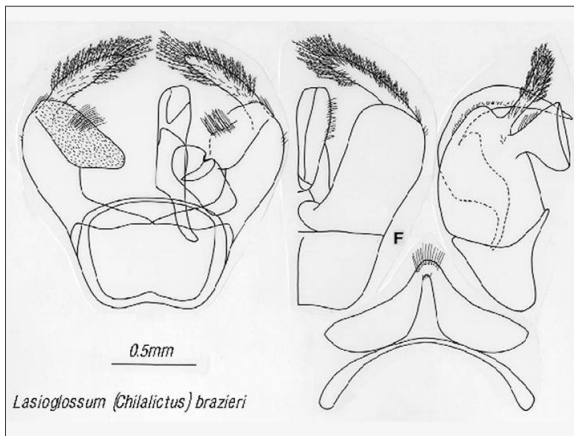
Vic. Beech Forest, 19 Feb 1992, K. Walker, on *Watsonia* det. K. Walker 1992
Dorsal view - female: Ken Walker Museums Victoria



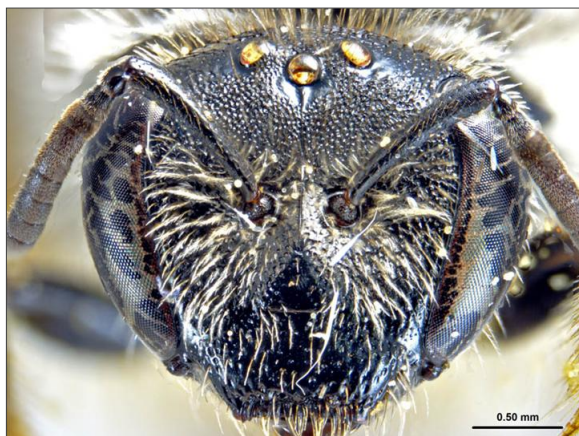
Vic. Sherbrooke, 2 Dec 1949. R.T det. K. Walker
Dorsal view - male: Ken Walker Museums Victoria



Vic. Sherbrooke, 2 Dec 1949. R.T det. K. Walker
Gaster venter - male: Ken Walker Museums Victoria



Vic. Emerald, 3 Jan 1936 det. K. Walker
Genitalia - male: Ken Walker Museums Victoria



Vic. Beech Forest, 19 Feb 1992, K. Walker, on *Watsonia* det. K. Walker 1992
Head front - female: Ken Walker Museums Victoria



Vic. Sherbrooke, 2 Dec 1949. R.T det. K. Walker
Head front - male: Ken Walker Museums Victoria



Lasioglossum (Chilalictus) brazieri
 NSW. Alpine Creek, Kiandra, 16 Jan 1968,
 JCC det. K. Walker
Labrum: Ken Walker Museums Victoria



Vic. Beech Forest, 19 Feb 1992, K. Walker,
 on Watsonia det. K. Walker 1992
Lateral view - female: Ken Walker Museums
 Victoria



Vic. Sherbrooke, 2 Dec 1949. R.T det. K.
 Walker
Lateral view - male: Ken Walker Museums
 Victoria



Vic. Beech Forest, 19 Feb 1992, K. Walker,
 on Watsonia det. K. Walker 1992
Mesoscutum - female: Ken Walker
 Museums Victoria

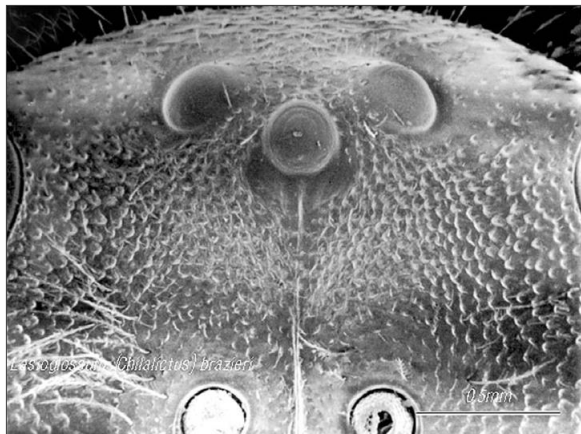


Vic. Beech Forest, 19 Feb 1992, K. Walker,
 on Watsonia det. K. Walker 1992
Metasoma dorsal - female: Ken Walker
 Museums Victoria

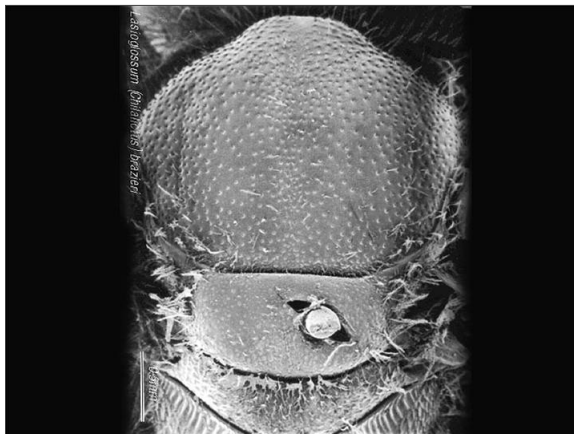


Vic. Beech Forest, 19 Feb 1992, K. Walker,
 on Watsonia det. K. Walker 1992
Propodeum - female: Ken Walker Museums
 Victoria

4. Other Images



NSW. Alpine Creek, Kiandra, 16 Jan 1968,
JCC det. K. Walker
Head front - female SEM: Ken Walker
Museums Victoria



NSW. Alpine Creek, Kiandra, 16 Jan 1968,
JCC det. K. Walker
Mesosoma - Female SEM: Ken Walker
Museums Victoria

Results Generated:

Wednesday, January 20, 2021
