

1. PaDIL Species Factsheet



Scientific Name:

Lasioglossum (Chilalictus) expansifrons (Cockerell, 1914)
(Hymenoptera: Halictidae: Halictinae: Halictini)

Common Name

Native expansifrons halictid

Live link: <http://www.padil.gov.au/pollinators/Pest/Main/138269>

Image Library

Australian Pollinators

Live link: <http://www.padil.gov.au/pollinators/>

Partners for Australian Pollinators image library



Western Australian Museum
<https://museum.wa.gov.au/>



South Australian Museum
<https://www.samuseum.sa.gov.au/>



Australian Museum
<https://australian.museum/>



Museums Victoria
<https://museumsvictoria.com.au/>

2. Species Information

2.1. Details

Specimen Contact: Museum Victoria - discoverycentre@museum.vic.gov.au

Author: Walker, K.

Citation: Walker, K. (2009) Native expansifrons halictid (*Lasioglossum (Chilalictus) expansifrons*) Updated on 7/16/2010 Available online: PaDIL - <http://www.padil.gov.au>

Image Use: Free for use under the Creative Commons Attribution-NonCommercial 4.0 International (CC BY-NC 4.0)

2.2. URL

Live link: <http://www.padil.gov.au/pollinators/Pest/Main/138269>

2.3. Facets

Status: Native Australian Beneficial Species

Host Genera: Fresh Flowers

Bio-Region: Australasian - Oceanian

Host Family: Boraginaceae, Compositae, Cruciferae, Dilleniaceae, Fabaceae, Iridaceae, Leguminosae, Liliaceae, Myoporaceae, Myrtaceae, Pittosporaceae, Polygalaceae, Sapindaceae, Sterculiaceae

Body length / colours: Both sexes mesoscutum non-metallic, Body length medium - less than 9mm greater than 5mm - Female, Female mesoscutum and metasoma black

Head Characters: Both sexes frons not elongated - OAD less than 30% of HW, Female frons sculpture reticulate, Male antennae moderate length: $AS2 + AS3 = AS4$, Male clypeus yellow, Female frons sculpture striate, Female head shape triangular, Male macrocephalic head, Male flagellum length greater than head width, Male frons sparsely hirsute to level of median ocellus

Visitation Host Families: Compositae, Myrtaceae, Pittosporaceae, Sapindaceae

Female Labrum: Basal box with tubercles, Basal box smooth median area, Distal process setae not originating on margin, Distal process lateral teeth hooked, Distal process semi-rectangular shaped, Distal process lateral keels weakly developed

Leg Characters: Hind basitibial plate rounded, Inner hind tibial spur with one tooth

Male Genitalia: Retrorse well developed, S7 apically truncate, S7 apically bilobed

Mesosomal Characters: Female scutum surface shining, Female scutum anterior margin rounded, Female scutum densely punctate mesially, Female pronotum with obtuse dorsolateral angles, Female scutum closely punctate mesially

Mesoventral Characters: Female mesoventral hair simple

Metasomal Characters: Female T1 punctate, Male S2- S4 with plumose hair hair bands, Male gastral venter with distinct hair pattern, Female metasoma with full and lateral tomentum across tergites

Propodeum Sculpture: Dorsal rim carinate in posterolateral corners only, Dorsal sculpture ruguloso-striolate

Forewing Venation: Male 2nd r-m as strong as 1st r-m

2.4. Diagnostic Notes

Lasioglossum (Chilalictus) expansifrons (Cockerell, 1914)

Halictus expansifrons Cockerell, T.D.A. 1914. Descriptions and records of bees. LIX. Annals and Magazine of Natural History 8 13: 504–522 [521].

Type data: Syntype(s) BMNH 2? (a specimen is labelled 'type' and has registration number Hym.17.a.946), NSW.

Full description

Diagnosis: Most like *L. chapmani*. Both sexes: Body black. Female: Frons reticulate-striate, mesoscutum surface shining, densely punctate, dorsal surface of propodeum weakly ruguloso-striolate, weakly defined posterolaterally by carinae. Male: Antennae moderately long, frons, paracocular areas and supraclipeal area with dense hair forming a mat, S4 with 2 median tufts of long plumose hair, tufts weakly separated along midline, hair posterolaterally directed; forewings with 2nd r-m as strong as 1st r-m.

Remarks: See notes for *L. chapmani*. Five macrocephalic males, including two showing gross enlargement of the head capsule, were examined (one male: NSW. Cobar; 3 males: Vic. Kerang; 1 male: SA. Wilmington). The measurements of these specimens are as follows: Body length: 5.78-6.70mm (mean=6.33mm SD=0.40 n=5); Head width: 1.93-2.35mm (n=5); Forewing length: 1.48-1.64mm (mean=1.56mm SD=0.07 n=5). Relative dimensions: HW 100; HL 78-82; UID 65-67; LID 58-64; AOD 18-20; IAD 16-17; OAD 22-24; IOD 19-20; OOD 17-19; CL 18-19; GW 21-26; EW 23-26; ML 41-46; SL 23-27; FL 105-112.

2.5. Web Links

AFD: [http://www.environment.gov.au/biodiversity/abrs/online-resources/fauna/afd/taxa/Lasioglossum_\(Chilalictus\)_expansifrons](http://www.environment.gov.au/biodiversity/abrs/online-resources/fauna/afd/taxa/Lasioglossum_(Chilalictus)_expansifrons)

3. Diagnostic Images



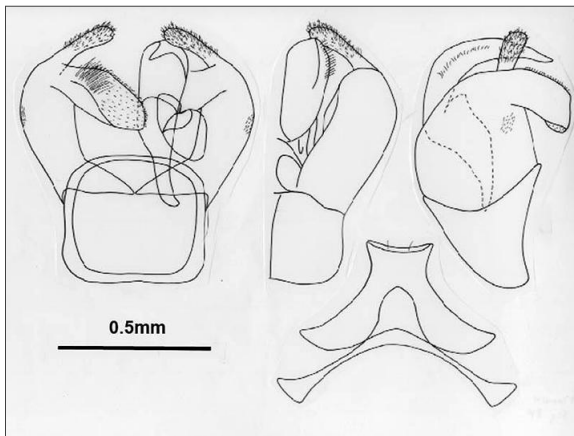
NSW. 30km W Gilgrandra, 8 Dec 1976,
EME det. K. Walker 1994
Dorsal view - female: Ken Walker Museums
Victoria



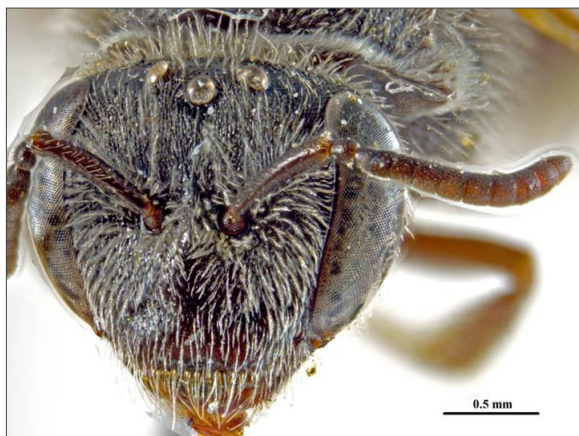
NSW. 30km W Gilgrandra, 8 Dec 1976,
EME det. K. Walker 1994
Dorsal view - male: Ken Walker Museums
Victoria



NSW. 30km W Gilgrandra, 8 Dec 1976,
EME det. K. Walker 1994
Gaster venter - male: Ken Walker Museums
Victoria



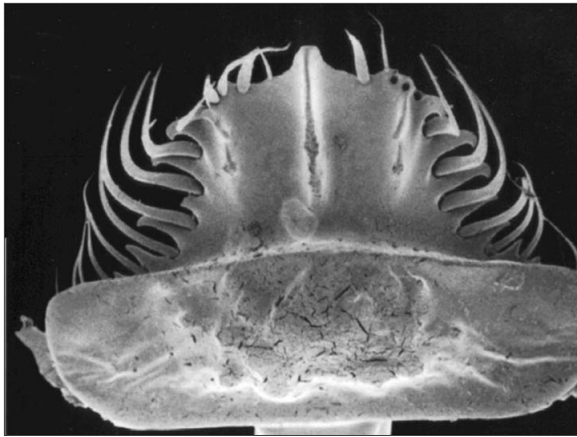
NSW. 30km W Gilgrandra, 8 Dec 1976,
EME det. K. Walker 1994
Genitalia - male: Ken Walker Museums
Victoria



NSW. 30km W Gilgrandra, 8 Dec 1976,
EME det. K. Walker 1994
Head front - female: Ken Walker Museums
Victoria



NSW. 30km W Gilgrandra, 8 Dec 1976,
EME det. K. Walker 1994
Head front - male: Ken Walker Museums
Victoria



NSW. 30km W Gilgrandra, 8 Dec 1976,
EME det. K. Walker 1994
Labrum: Ken Walker Museums Victoria



NSW. 30km W Gilgrandra, 8 Dec 1976,
EME det. K. Walker 1994
Lateral view - female: Ken Walker Museums Victoria



NSW. 30km W Gilgrandra, 8 Dec 1976,
EME det. K. Walker 1994
Lateral view - male: Ken Walker Museums Victoria



NSW. 30km W Gilgrandra, 8 Dec 1976,
EME det. K. Walker 1994
Mesoscutum - female: Ken Walker Museums Victoria

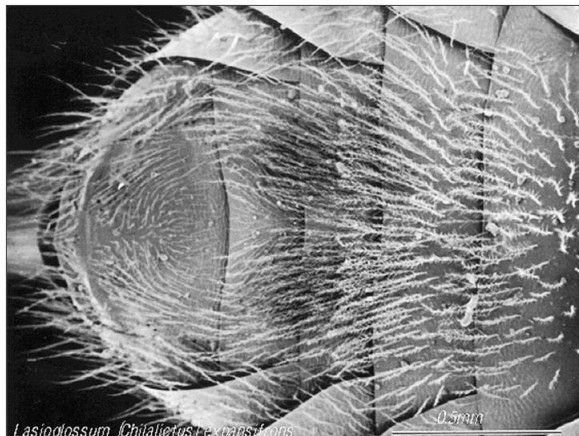


NSW. 30km W Gilgrandra, 8 Dec 1976,
EME det. K. Walker 1994
Metasoma dorsal - female: Ken Walker Museums Victoria

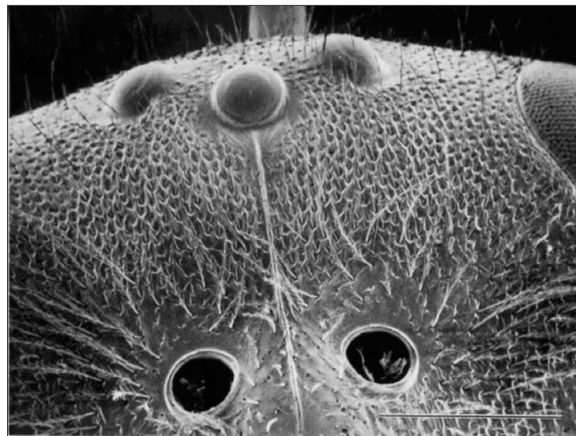


NSW. 30km W Gilgrandra, 8 Dec 1976,
EME det. K. Walker 1994
Propodeum - female: Ken Walker Museums Victoria

4. Other Images



NSW. 30km W Gilgrandra, 8 Dec 1976,
EME det. K. Walker 1994
Gaster venter - male SEM: Ken Walker
Museums Victoria



NSW. 30km W Gilgrandra, 8 Dec 1976,
EME det. K. Walker 1994
Head front - female SEM: Ken Walker
Museums Victoria

Results Generated:

Wednesday, January 20, 2021
