

1. PaDIL Species Factsheet



Scientific Name:

Rumex acetosella Linnaeus, C (1753)

(Magnoliophyta: Magnoliopsida: Polygonales: Polygonaceae)

Common Name

Common sheep sorrel

Live link: <http://www.padil.gov.au/seeds/Pest/Main/141996>

Image Library

Seed Library

Live link: <http://www.padil.gov.au/seeds/>

Partners for Seed Library image library



Australian Government
Department of Agriculture,
Water and the Environment

Department of Agriculture, Water and the Environment

<https://www.awe.gov.au/>

**MUSEUMS
VICTORIA**

Museums Victoria

<https://museumsvictoria.com.au/>

2. Species Information

2.1. Details

Specimen Contact: AQIS -

Author: Clare McLellan

Citation: Clare McLellan (2011) Common sheep sorrel (*Rumex acetosella*) Updated on 1/21/2013 Available online: PaDIL - <http://www.padil.gov.au>

Image Use: Free for use under the Creative Commons Attribution-NonCommercial 4.0 International (CC BY-NC 4.0)

2.2. URL

Live link: <http://www.padil.gov.au/seeds/Pest/Main/141996>

2.3. Facets

Fruit appendages: Spines

Fruit colour: Brown

Fruit length: 1-3mm

Fruit shape: Florate

Reliability: High

Seed colour: Brown Dark, Brown light, Reddish-brown

Seed length: 1.1 to 2mm

Seed sculpture: Tuberculate, Papillate

Seed shape: Angulated

2.4. Other Names

Acetosella vulgaris Fourr Fourreau, J.P. (1869)

Field Sorrel

Horse Sorrel

Red Sorrel

Sheep Sorrel

Sorrel

Sour Dock

2.5. Diagnostic Notes

****Pictured:**** Achene

Disseminule: Fruit (referred to as achene or seed unit) pictured with persistent floral parts

****Description:****

Achene appendages: Spines

Achene Colour: Reddish brown

Achene Length: 1.1 - 2mm

Achene Sculpture: Enclosed in persistent hardened perianth - Papillate, Tuberculate

Achene Shape: Angulated, Florate

A variable species - smooth when not enclosed in perianth

3. Diagnostic Images



Seed Project
Achene Dorsal: Clare McLellan Museums
 Victoria



Seed Project
Achene Lateral: Clare McLellan Museums
 Victoria



Seed Project
Achene Ventral: Clare McLellan Museums
 Victoria



Seed Project
Achene with floral parts: Clare McLellan
 Museums Victoria



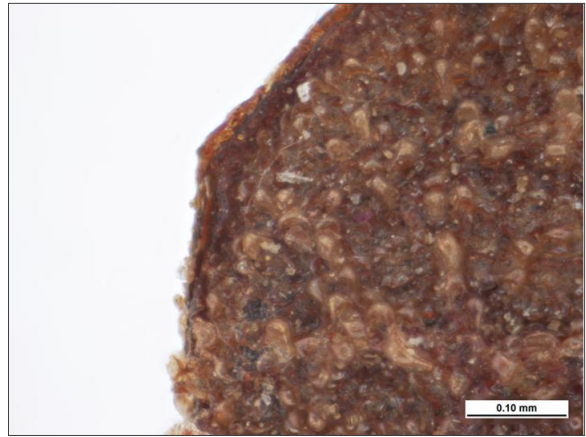
Seed Project
Achene without floral parts: Clare McLellan
 Museums Victoria



Australian \$2 Coin with achenes
Coin compare: Clare McLellan Museums
 Victoria



Seed Project
Group Image: Clare McLellan Museums
Victoria



Seed Project
Surface detail (Floral parts): Clare McLellan
Museums Victoria

4. Other Images

Results Generated:

Thursday, January 21, 2021
