

1. PaDIL Species Factsheet



Scientific Name:

Galium tricornutum Dandy, J.E. (1957)

(Magnoliophyta: Magnoliopsida: Rubiales: Rubiaceae)

Common Name

Threehorn bedstraw cleavers

Live link: <http://www.padil.gov.au/seeds/Pest/Main/142260>

Image Library

Seed Library

Live link: <http://www.padil.gov.au/seeds/>

Partners for Seed Library image library



Australian Government
Department of Agriculture,
Water and the Environment

Department of Agriculture, Water and the Environment

<https://www.awe.gov.au/>

**MUSEUMS
VICTORIA**

Museums Victoria

<https://museumsvictoria.com.au/>

2. Species Information

2.1. Details

Specimen Contact: AQIS -

Author: Clare McLellan

Citation: Clare McLellan (2012) Threehorn bedstraw cleavers (*Galium tricornutum*) Updated on 1/21/2013

Available online: PaDIL - <http://www.padil.gov.au>

Image Use: Free for use under the Creative Commons Attribution-NonCommercial 4.0 International (CC BY-NC 4.0)

2.2. URL

Live link: <http://www.padil.gov.au/seeds/Pest/Main/142260>

2.3. Facets

Fruit appendages: Not applicable

Fruit colour: Not applicable

Fruit length: Not applicable

Fruit shape: Not applicable

Reliability: High

Seed colour: Variable - brown/yellow

Seed length: 2.1-4mm

Seed sculpture: Castellated, Tuberculate

Seed shape: Round

2.4. Other Names

Roughfruit corn

2.5. Diagnostic Notes

****Pictured:**** Seed(s)

****Description****

Seed Colour: Variable - brown/yellow

Seed Length: 2 - 4mm

Seed Sculpture: Castellated, Tuberculate

Seed Shape: Round

A scrambling annual with four-angled stems up to 60 cm long that have small backward-pointing coarse hairs or prickles along the edges. The leaves are in rings of six to eight around the stems. The leaves are mostly 10-50 mm long and 1-5 mm wide, broadest above the middle and tapering to a blunt tip with a short central point. The upper surfaces of the leaves are smooth, but the margins and sometimes the lower surface have scattered tiny prickles. The flowers are inconspicuous, in loose groups of one to three arising from the upper stem nodes. The four triangular petals are white, about 1 mm long. The fruits develop soon after the flower opens and consist of a pair of joined, spherical nutlets, each 2-3 mm in diameter and with roughened surfaces (James & Allen 1992; Jeanes 1999).

Source: See Web Links for Weeds in Australia

2.6. Web Links

Weeds in Australia: <http://www.environment.gov.au/biodiversity/invasive/weeds/>

3. Diagnostic Images



Australian \$2 Coin with seeds
Coin compare: Clare McLellan Museums
Victoria



Seed Project
Group Image: Clare McLellan Museums
Victoria



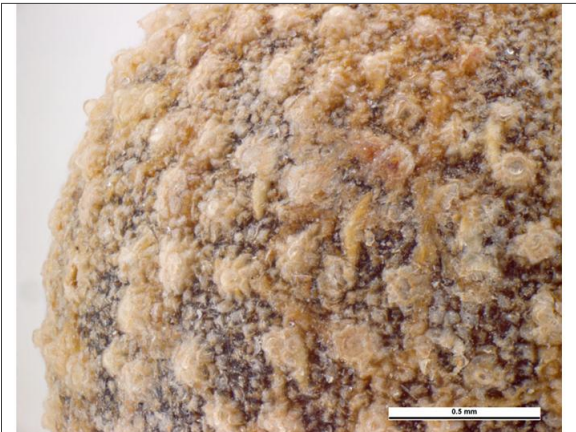
Seed Project
Seed Dorsal: Clare McLellan Museums
Victoria



Seed Project
Seed Lateral: Clare McLellan Museums
Victoria



Seed Project
Seed Ventral: Clare McLellan Museums
Victoria



Seed Project
Surface detail: Clare McLellan Museums
Victoria

4. Other Images

Results Generated:

Wednesday, August 17, 2022
