

# 1. PaDIL Species Factsheet



---

## Scientific Name:

*Lepidium sp.* --

(Magnoliophyta: Magnoliopsida: Capparales: Brassicaceae)

## Common Name

Field cress

Live link: <http://www.padil.gov.au/seeds/Pest/Main/142540>

## Image Library

Seed Library

Live link: <http://www.padil.gov.au/seeds/>

## Partners for Seed Library image library



Australian Government  
Department of Agriculture,  
Water and the Environment

Department of Agriculture, Water and the Environment

<https://www.awe.gov.au/>

**MUSEUMS  
VICTORIA**

Museums Victoria

<https://museumsvictoria.com.au/>

## 2. Species Information

### 2.1. Details

**Specimen Contact:** AQIS -

**Author:** Clare McLellan

**Citation:** Clare McLellan (2012) Field cress (*Lepidium sp.*) Updated on 1/17/2013 Available online: PaDIL - <http://www.padil.gov.au>

**Image Use:** Free for use under the Creative Commons Attribution-NonCommercial 4.0 International (CC BY-NC 4.0)

### 2.2. URL

Live link: <http://www.padil.gov.au/seeds/Pest/Main/142540>

### 2.3. Facets

**Fruit appendages:** Colliculate

**Fruit colour:** Purple, Yellow

**Fruit length:** 1-3mm

**Fruit shape:** Two halves, Oval

**Reliability:** High

**Seed colour:** Brown light, Orange

**Seed length:** 1.1 to 2mm

**Seed sculpture:** Granular, Rugose

**Seed shape:** Elliptic

### 2.4. Diagnostic Notes

**\*\*Pictured:\*\*** Inflorescence, Silicle, Fruit (a capsule) and seed(s)

**\*\*Description:\*\***

Capsule appendages: Colliculate

Capsule Colour: Purple, Yellow

Capsule Length: 1 - 3mm

Capsule shape: Oval in two halves

Seed Colour: Brown light

Seed Length: 1 - 2mm

Seed Sculpture: Granular, Rugose

Seed Shape: Elliptic

Inflorescence is an elongated raceme

### 3. Diagnostic Images



Seed Project  
**Capsule Dorsal:** Clare McLellan Museums  
 Victoria



Seed Project  
**Capsule Lateral :** Clare McLellan Museums  
 Victoria



Seed Project  
**Capsule Ventral:** Clare McLellan Museums  
 Victoria



Australian \$2 Coin with seeds  
**Coin compare:** Clare McLellan Museums  
 Victoria



Seed Project  
**Group Image:** Clare McLellan Museums  
 Victoria



Seed Project  
**Seed Dorsal:** Clare McLellan Museums  
 Victoria



Seed Project  
**Seed Lateral** : Clare McLellan Museums  
Victoria



Seed Project  
**Seed Surface Detail** : Clare McLellan  
Museums Victoria



Seed Project  
**Seed Ventral**: Clare McLellan Museums  
Victoria



Seed Project  
**Silicle**: Clare McLellan Museums Victoria

## 4. Other Images



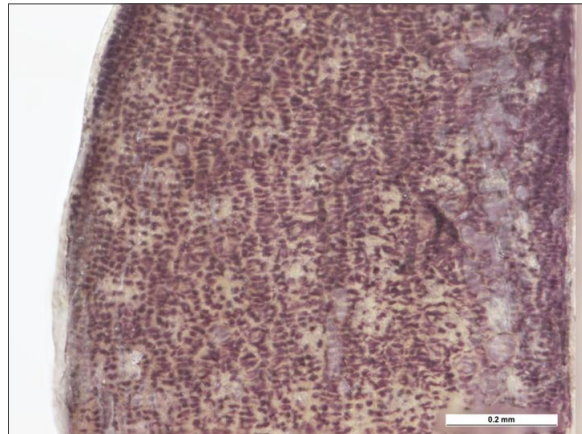
Australian \$2 Coin with capsules  
**Coin compare:** Clare McLellan Museums Victoria



Seed Project  
**Inflorescence :** Clare McLellan Museums Victoria



Seed Project  
**Silicle:** Clare McLellan Museums Victoria



Seed Project  
**Silicle Surface Detail:** Clare McLellan Museums Victoria

Results Generated:

Saturday, May 21, 2022

